



Enclosure, Panel and Cabinet Systems

Controlled **Power**, Continuous **Energy**

www.nilpapano.com

ABOUT US

Our company Nilas Çelik A.Ş. was established in 2022 in line with our desire to take part as a manufacturer in the electricity sector, which we have been in since 2003. The main purpose of our Nilpa Pano brand within our company is to provide professional solutions to the needs of our customers in this field with our wide range of panel products that we produce in our facility located in Tekirdağ/Ergene.

Among our standard and specially designed products in our Nilpa Pano production area; Modular Standing Type Enclosures, Wall Type Enclosures, External Enclosures, Stainless Steel Enclosures, ABS Enclosures, Control Panels, Cable Trays, Rack Cabinets and Regulator Enclosures. In addition to these, special production enclosures can also be manufactured upon request.

We prioritise quality philosophy in our production processes by targeting maximum customer satisfaction. In this context, we offer our superior product quality in accordance with ISO 9001, ISO 14001 and OHSAS 18001 standards in accordance with environmental and occupational health and safety management systems.

We take our quality and business processes to the next level every day by increasing our R&D investments and closely follow the technological developments and innovations in the world. We attach importance to developing our production processes in line with the expectations by identifying the needs in advance, adopting the understanding of innovation and incorporating it into our work.

As Nilpa Pano, we are actively continuing our export activities in line with our goal of having a say in the world market. We plan to continue our export policy in many different regions of the world by expanding our trade volume.

Since the day we were founded, we continue to be the long-term solution partner of our customers in line with our goal of being the first choice in the sector and to provide services with confidence.



MISSION

Our main mission is to offer our customers the most innovative solutions of the highest quality by advancing with the goal of zero error in our production processes and by closely following technological developments in the world.



**THANKS FOR
CHOOSING US!**

VISION

Our vision is to be an internationally competitive, leading, reliable and sought-after brand in the power industry.

WHY CHOOSE US?



Wide range of products

We offer the ability to customize your orders with a wide range of products tailored specifically to your needs, allowing you to meet all your needs in one place.



Customer satisfaction

We prioritize customer satisfaction and ensure timely and smooth delivery of your orders without compromising on product quality.



Experienced staff

Our company, which always prioritizes the needs of our customers, employs experienced and qualified employees who are constantly upgrading their qualifications.



Innovative technology

We offer you the most innovative solutions thanks to our state-of-the-art equipment that meets the latest technological trends.



Quality assured products

We provide our customers with technical support in the various applications of our type-tested panels, which we produce in accordance with TS EN IEC 62208: 2023.

INDEX

N SERIES - FLOOR STANDING MODULAR ENCLOSURES

| | |
|--|---|
| FLOOR STANDING MODULAR ENCLOSURE WITH MOUNTING PLATE | 1 |
| FLOOR STANDING MODULAR ENCLOSURE WITH DEAD FRONT | 2 |
| DOUBLE-DOOR FLOOR STANDING MODULAR ENCLOSURE WITH MOUNTING PLATE | 3 |
| MODULAR SYSTEM ENCLOSURE FRAME | 4 |
| FLOOR STANDING MODULAR ENCLOSURE FRAME WITH MOUNTING PLATE | 5 |
| FLOOR STANDING MODULAR METER BOX | 6 |

I SERIES – OUTDOOR TYPE ENCLOSURE

| | |
|---|---|
| FLOOR STANDING OUTDOOR TYPE ENCLOSURE WITH MOUNTING PLATE | 7 |
| FLOOR STANDING OUTDOOR TYPE ENCLOSURE WITH DEAD FRONT | 7 |
| WALL MOUNTED OUTDOOR TYPE ENCLOSURE WITH MOUNTING PLATE | 8 |
| WALL MOUNTED OUTDOOR TYPE ENCLOSURE WITH DEAD FRONT | 8 |

L SERIES – WALL MOUNTED ENCLOSURE

| | |
|--|----|
| SURFACE MOUNTED ENCLOSURE WITH MOUNTING PLATE | 9 |
| SURFACE MOUNTED ENCLOSURE WITH DEAD FRONT | 10 |
| SURFACE MOUNTED SEMI-MODULAR ENCLOSURE WITH DEAD FRONT | 11 |
| RECESSED ENCLOSURE WITH MOUNTING PLATE | 12 |
| RECESSED ENCLOSURE WITH DEAD FRONT | 13 |
| SURFACE MOUNTED DISTRIBUTION + LOW VOLTAGE BOARD | 14 |
| RECESSED DISTRIBUTION + LOW VOLTAGE BOARD | 14 |

P SERIES- CONTROL PANEL

| | |
|-------------------|----|
| DESK CONSOLE | 15 |
| PULT-TYPE CONSOLE | 16 |
| KIOSK ENCLOSURE | 16 |

A SERIES – CUSTOM ENCLOSURES

| | |
|--|----|
| ELEVATOR CONTROL BOARDS | 17 |
| ENCLOSURE FOR CONSTRUCTION SITE INSTALLATION | 17 |
| MEDIUM-VOLTAGE ENCLOSURE | 18 |
| SUBSTATION KIOSKS | 18 |

S SERIES – STAINLESS-STEEL ENCLOSURES

| | |
|--|----|
| STAINLESS-STEEL ENCLOSURE WITH MOUNTING PLATE | 19 |
| SEMI-MODULAR STAINLESS-STEEL ENCLOSURE WITH MOUNTING PLATE | 19 |

B SERIES – ABS ENCLOSURES

| | |
|---|----|
| ABS ENCLOSURE WITH OPAQUE DOOR AND DEAD FRONT | 20 |
| ABS ENCLOSURE WITH CLEAR DOOR AND DEAD FRONT | 20 |
| ABS ENCLOSURE WITH OPAQUE DOOR | 20 |
| ABS ENCLOSURE WITH CLEAR DOOR | 20 |

C SERIES - ADDITIONAL PRODUCTS

| | |
|-----------------------------|----|
| ROOF TYPE VENTILATION FAN | 21 |
| VENTILATION FILTERS | 21 |
| DATA POCKETS | 21 |
| DEAD FRONT / MOUNTING PLATE | 22 |

R SERIES – VOLTAGE REGULATOR ENCLOSURE AND RACK CABINET

| | |
|-----------------------------|----|
| RACK CABINET | 23 |
| VOLTAGE REGULATOR ENCLOSURE | 23 |

K SERIES - CABLE TRAYS

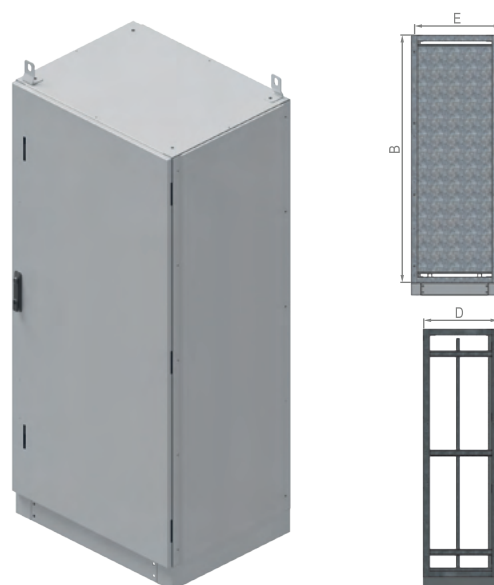
| | |
|------------------------|----|
| HEAVY DUTY CABLE TRAYS | 24 |
| TRAY BENDS | 24 |
| TRAY REDUCER | 24 |

OUR CERTIFICATIONS

25

FLOOR STANDING MODULAR ENCLOSURE WITH MOUNTING PLATE

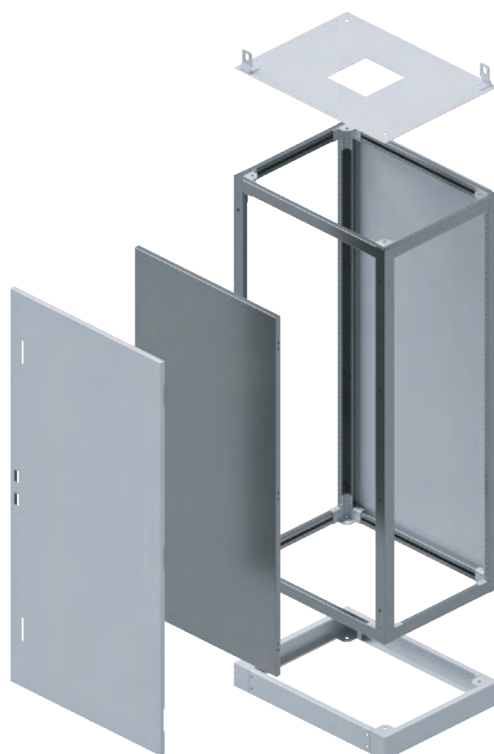
| TECHNICAL SPECIFICATIONS | |
|--------------------------|----------------------|
| Type | Floor Standing |
| Design | Modular |
| Area of Use | Industrial |
| Protection Class | IP 55 |
| Colors | RAL 7035 |
| Paint | Electrostatic Powder |
| Depth | 400-600 mm |
| Width | 400-800 mm |
| Height | 1600-2000 mm |
| Door | Single Door |
| Option | with Mounting Plate |



- The base is not included in the height measurements.
- When placing an order, the location of the openings on the doors for air filters, energy analyzers and alarms must be specified.
- Depending on preference, doors can be fitted with glass.
- The door is installed with concealed hinges and an Espagnolette lock.
- The rear and side plates have a similar design.

- The opening direction of the door can be changed.
- To ensure protection against moisture and dust, the doors have a polyurethane seal.
- Front and rear doors are available.
- Thanks to the modular design, enclosures can be connected in rows.
- Please contact our representative for prices.

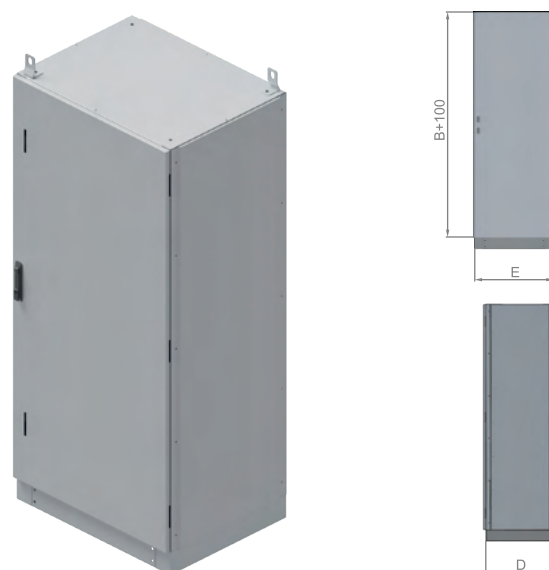
| PRODUCT CODE | WIDTH x LENGTH x DEPTH (cm) | MOUNTING PLATE (mm) |
|--------------------|-----------------------------|---------------------|
| NP.MD.TS.40*160*40 | 40 x 160 x 40 | 348 x 1350 |
| NP.MD.TS.50*160*40 | 50 x 160 x 40 | 448 x 1350 |
| NP.MD.TS.60*160*40 | 60 x 160 x 40 | 548 x 1350 |
| NP.MD.TS.40*160*50 | 40 x 160 x 50 | 348 x 1350 |
| NP.MD.TS.50*160*50 | 50 x 160 x 50 | 448 x 1350 |
| NP.MD.TS.60*160*50 | 60 x 160 x 50 | 548 x 1350 |
| NP.MD.TS.40*180*40 | 40 x 180 x 40 | 348 x 1650 |
| NP.MD.TS.50*180*40 | 50 x 180 x 40 | 448 x 1650 |
| NP.MD.TS.60*180*40 | 60 x 180 x 40 | 548 x 1650 |
| NP.MD.TS.40*180*50 | 40 x 180 x 50 | 348 x 1650 |
| NP.MD.TS.50*180*50 | 50 x 180 x 50 | 448 x 1650 |
| NP.MD.TS.60*180*50 | 60 x 180 x 50 | 548 x 1650 |
| NP.MD.TS.70*180*50 | 70 x 180 x 50 | 648 x 1650 |
| NP.MD.TS.50*200*40 | 50 x 200 x 40 | 448 x 1850 |
| NP.MD.TS.60*200*40 | 60 x 200 x 40 | 548 x 1850 |
| NP.MD.TS.70*200*40 | 70 x 200 x 40 | 648 x 1850 |
| NP.MD.TS.50*200*50 | 50 x 200 x 50 | 448 x 1850 |
| NP.MD.TS.60*200*50 | 60 x 200 x 50 | 548 x 1850 |
| NP.MD.TS.70*200*50 | 70 x 200 x 50 | 648 x 1850 |
| NP.MD.TS.80*200*50 | 80 x 200 x 50 | 748 x 1850 |
| NP.MD.TS.70*200*60 | 70 x 200 x 60 | 648 x 1850 |
| NP.MD.TS.80*200*60 | 80 x 200 x 60 | 748 x 1850 |



FLOOR STANDING MODULAR ENCLOSURE WITH DEAD FRONT

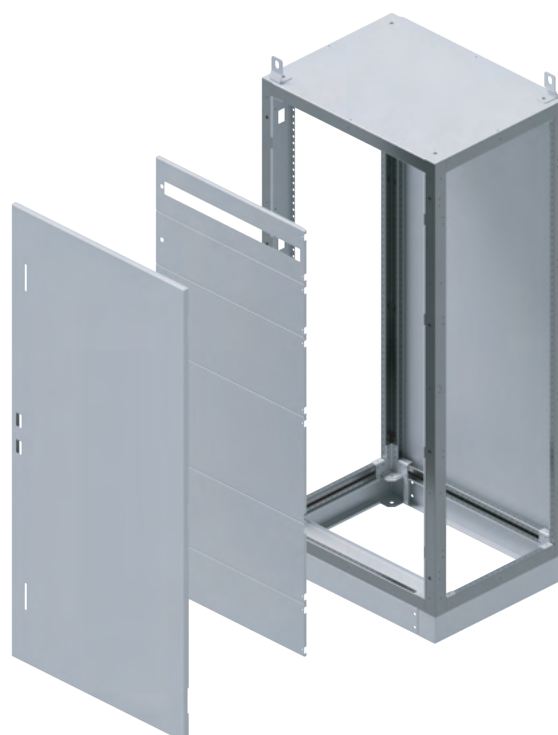
NILPA

| TECHNICAL SPECIFICATIONS | |
|--------------------------|----------------------|
| Type | Floor Standing |
| Design | Modular |
| Area of Use | Industrial |
| Protection Class | IP 55 |
| Colors | RAL 7035 |
| Paint | Electrostatic Powder |
| Depth | 400-600 mm |
| Width | 400-800 mm |
| Height | 1600-2000 mm |
| Door | Single Door |
| Option | with Dead Front |



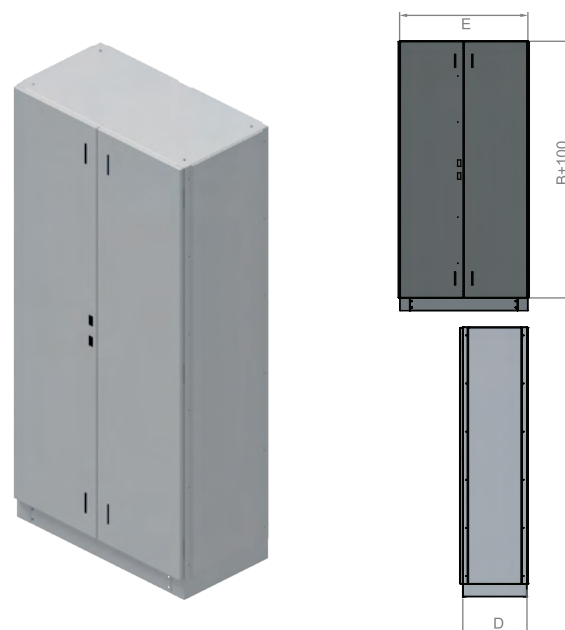
- The base is not included in the height measurements.
- When placing an order, the location of the openings on the doors for air filters, energy analyzers and alarms must be specified.
- With the modular hinged dead front system, it is possible to modify the dead front assembly.
- The design of the dead front can be modified, the dimensions of the dead front and internal cutouts must be specified when placing the order.
- The number of automats indicated in the table refers to one row.
- Front and rear doors are available. The opening direction of the front and rear doors can be changed.
- The polyurethane seal, Espagnolette lock and concealed hinges protect the doors from moisture and dust.
- Depending on preference, the doors can be fitted with glass.
- Thanks to the modular design, enclosures can be connected in rows.
- Please contact our representative for prices.

| PRODUCT CODE | WIDTH x LENGTH x DEPTH (cm) | NUMBER OF AUTOMATS |
|--------------------|-----------------------------|--------------------|
| NP.MD.PS.40*160*40 | 40 x 160 x 40 | 14 |
| NP.MD.PS.50*160*40 | 50 x 160 x 40 | 19 |
| NP.MD.PS.60*160*40 | 60 x 160 x 40 | 25 |
| NP.MD.PS.40*160*50 | 40 x 160 x 50 | 14 |
| NP.MD.PS.50*160*50 | 50 x 160 x 50 | 19 |
| NP.MD.PS.60*160*50 | 60 x 160 x 50 | 25 |
| NP.MD.PS.40*180*40 | 40 x 180 x 40 | 14 |
| NP.MD.PS.50*180*40 | 50 x 180 x 40 | 19 |
| NP.MD.PS.60*180*40 | 60 x 180 x 40 | 25 |
| NP.MD.PS.40*180*50 | 40 x 180 x 50 | 14 |
| NP.MD.PS.50*180*50 | 50 x 180 x 50 | 19 |
| NP.MD.PS.60*180*50 | 60 x 180 x 50 | 25 |
| NP.MD.PS.70*180*50 | 70 x 180 x 50 | 29 |
| NP.MD.PS.50*200*40 | 50 x 200 x 40 | 19 |
| NP.MD.PS.60*200*40 | 60 x 200 x 40 | 25 |
| NP.MD.PS.70*200*40 | 70 x 200 x 40 | 29 |
| NP.MD.PS.50*200*50 | 50 x 200 x 50 | 19 |
| NP.MD.PS.60*200*50 | 60 x 200 x 50 | 25 |
| NP.MD.PS.70*200*50 | 70 x 200 x 50 | 29 |
| NP.MD.PS.80*200*50 | 80 x 200 x 50 | 35 |
| NP.MD.PS.70*200*60 | 70 x 200 x 60 | 29 |
| NP.MD.PS.80*200*60 | 80 x 200 x 60 | 35 |



DOUBLE-DOOR FLOOR STANDING MODULAR ENCLOSURE WITH MOUNTING PLATE

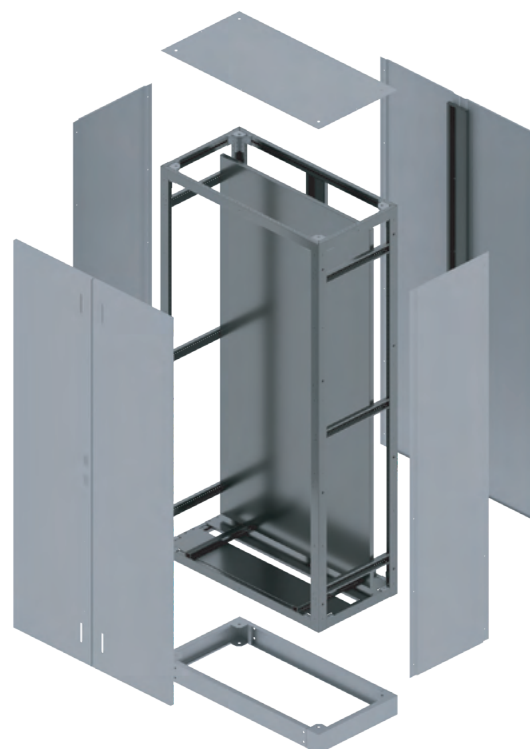
| TECHNICAL SPECIFICATIONS | |
|--------------------------|----------------------|
| Type | Floor Standing |
| Design | Modular |
| Area of Use | Industrial |
| Protection Class | IP 55 |
| Colors | RAL 7035 |
| Paint | Electrostatic Powder |
| Depth | 400-500 mm |
| Width | 1200 mm |
| Height | 1600-2000 mm |
| Door | Double door |
| Option | with Mounting Plate |



- The base is not included in the height measurements.
- The opening direction of the door can be changed.
- The door is installed with concealed hinges and an Espagnolette lock.
- The rear and side plates have a similar design.
- When placing an order, the location of the openings on the doors for air filters, energy analyzers and alarms must be specified.

- Depending on preference, doors can be fitted with glass.
- Thanks to the modular design, enclosures can be connected in rows.
- To ensure protection against moisture and dust, the doors have a polyurethane seal.
- Front and rear doors are available.
- Please contact our representative for prices.

| PRODUCT CODE | WIDTH x LENGTH x DEPTH (cm) | MOUNTING PLATE (mm) |
|----------------------|--------------------------------|------------------------|
| NP.MD.TSÇ.120*160*40 | 120 x 160 x 40 | 1048 x 1350 |
| NP.MD.TSÇ.120*180*40 | 120 x 180 x 40 | 1048 x 1550 |
| NP.MD.TSÇ.120*200*40 | 120 x 200 x 40 | 1048 x 1850 |
| NP.MD.TSÇ.120*160*50 | 120 x 160 x 50 | 1048 x 1350 |
| NP.MD.TSÇ.120*180*50 | 120 x 180 x 50 | 1048 x 1550 |
| NP.MD.TSÇ.120*200*50 | 120 x 200 x 50 | 1048 x 1850 |



MODULAR SYSTEM ENCLOSURE FRAME

NILPA

| TECHNICAL SPECIFICATIONS | |
|--------------------------|------------------|
| Type | Floor standing |
| Design | Modular |
| Plate Thickness | 1,5 mm |
| Type of material | Galvanized steel |
| Depth | 400 - 600 mm |
| Width | 400 - 800 mm |
| Height | 1600 - 2000 mm |



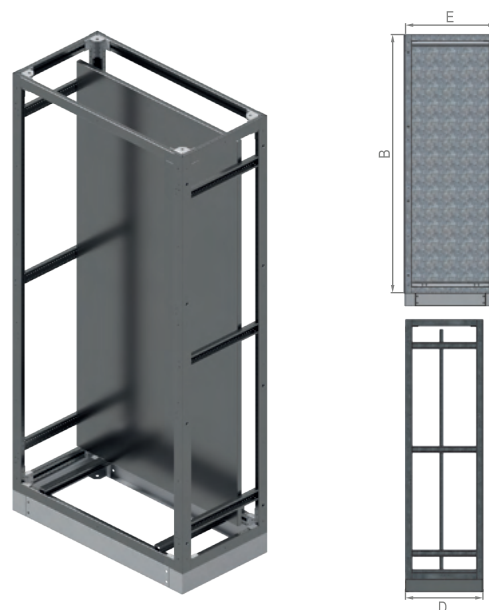
- The base is not included in the height measurements.
- Thanks to the fully modular, seamless design, frame can be modified.
- Please contact our representative for prices.

| PRODUCT CODE | WIDTH x HEIGHT x DEPTH (cm) |
|-------------------|-----------------------------|
| NP.MD.K.40*160*40 | 40 x 160 x 40 |
| NP.MD.K.50*160*40 | 50 x 160 x 40 |
| NP.MD.K.60*160*40 | 60 x 160 x 40 |
| NP.MD.K.40*160*50 | 40 x 160 x 50 |
| NP.MD.K.50*160*50 | 50 x 160 x 50 |
| NP.MD.K.60*160*50 | 60 x 160 x 50 |
| NP.MD.K.40*180*40 | 40 x 180 x 40 |
| NP.MD.K.50*180*40 | 50 x 180 x 40 |
| NP.MD.K.60*180*40 | 60 x 180 x 40 |
| NP.MD.K.40*180*50 | 40 x 180 x 50 |
| NP.MD.K.50*180*50 | 50 x 180 x 50 |
| NP.MD.K.60*180*50 | 60 x 180 x 50 |
| NP.MD.K.70*180*50 | 70 x 180 x 50 |
| NP.MD.K.50*200*40 | 50 x 200 x 40 |
| NP.MD.K.60*200*40 | 60 x 200 x 40 |
| NP.MD.K.70*200*40 | 70 x 200 x 40 |
| NP.MD.K.50*200*50 | 50 x 200 x 50 |
| NP.MD.K.60*200*50 | 60 x 200 x 50 |
| NP.MD.K.70*200*50 | 70 x 200 x 50 |
| NP.MD.K.80*200*50 | 80 x 200 x 50 |
| NP.MD.K.70*200*60 | 70 x 200 x 60 |
| NP.MD.K.80*200*60 | 80 x 200 x 60 |



FLOOR STANDING MODULAR ENCLOSURE FRAME WITH MOUNTING PLATE

| TECHNICAL SPECIFICATIONS | |
|--------------------------|------------------|
| Type | Floor Standing |
| Design | Modular |
| Plate Thickness | 1,5 mm |
| Type of material | Galvanized Steel |
| Depth | 400 - 600 mm |
| Width | 400 - 800 mm |
| Height | 1600 - 2000 mm |



- The base is not included in the height measurements.
- Thanks to the fully modular, seamless design, frame can be modified.
- Please contact our representative for prices.

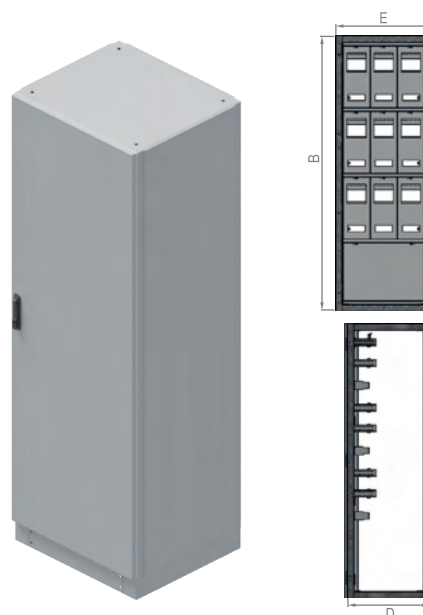
| PRODUCT CODE | WIDTH x HEIGHT x DEPTH (cm) | MOUNTING PLATE (mm) |
|----------------------|-----------------------------|---------------------|
| NP.MD.K.TS.40*160*40 | 40 x 160 x 40 | 348 x 1450 |
| NP.MD.K.TS.50*160*40 | 50 x 160 x 40 | 448 x 1450 |
| NP.MD.K.TS.60*160*40 | 60 x 160 x 40 | 548 x 1450 |
| NP.MD.K.TS.40*160*50 | 40 x 160 x 50 | 348 x 1450 |
| NP.MD.K.TS.50*160*50 | 50 x 160 x 50 | 448 x 1450 |
| NP.MD.K.TS.60*160*50 | 60 x 160 x 50 | 548 x 1450 |
| NP.MD.K.TS.40*180*40 | 40 x 180 x 40 | 348 x 1650 |
| NP.MD.K.TS.50*180*40 | 50 x 180 x 40 | 448 x 1650 |
| NP.MD.K.TS.60*180*40 | 60 x 180 x 40 | 548 x 1650 |
| NP.MD.K.TS.40*180*50 | 40 x 180 x 50 | 348 x 1650 |
| NP.MD.K.TS.50*180*50 | 50 x 180 x 50 | 448 x 1650 |
| NP.MD.K.TS.60*180*50 | 60 x 180 x 50 | 548 x 1650 |
| NP.MD.K.TS.70*180*50 | 70 x 180 x 50 | 648 x 1650 |
| NP.MD.K.TS.50*200*40 | 50 x 200 x 40 | 448 x 1850 |
| NP.MD.K.TS.60*200*40 | 60 x 200 x 40 | 548 x 1850 |
| NP.MD.K.TS.70*200*40 | 70 x 200 x 40 | 648 x 1850 |
| NP.MD.K.TS.50*200*50 | 50 x 200 x 50 | 448 x 1850 |
| NP.MD.K.TS.60*200*50 | 60 x 200 x 50 | 548 x 1850 |
| NP.MD.K.TS.70*200*50 | 70 x 200 x 50 | 648 x 1850 |
| NP.MD.K.TS.80*200*50 | 80 x 200 x 50 | 748 x 1850 |
| NP.MD.K.TS.70*200*60 | 70 x 200 x 60 | 648 x 1850 |
| NP.MD.K.TS.80*200*60 | 80 x 200 x 60 | 748 x 1850 |



FLOOR STANDING MODULAR METER BOX

NILPA

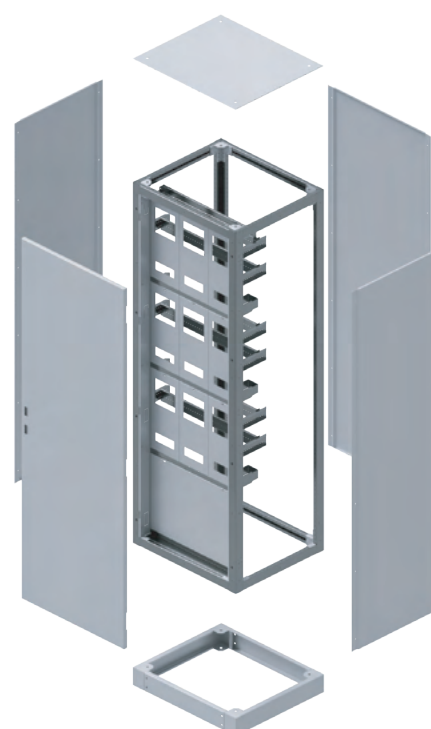
| TECHNICAL SPECIFICATIONS | |
|--------------------------|----------------------|
| Type | Floor Standing |
| Design | Modular |
| Area of Use | Industrial |
| Protection Class | IP 55 |
| Colors | RAL 7035 |
| Paint | Electrostatic Powder |
| Depth | 400-500 mm |
| Width | 400-900 mm |
| Height | 1600-2000 mm |
| Door | Single-Double door |
| Option | with Dead Front |



- The opening direction of the door can be changed.
- The door is installed with concealed hinges and an Espagnolette lock.
- The rear and side plates have a similar design.
- When placing an order, the location of the openings on the doors for air filters, energy analyzers and alarms must be specified.
- Depending on preference, doors can be fitted with glass.

- The meter compartments can be modified on request.
- Thanks to the modular design, enclosures can be connected in rows.
- To ensure protection against moisture and dust, the doors have a polyurethane seal.
- Front and rear doors are available.
- Please contact our representative for prices.

| PRODUCT CODE | WIDTH x HEIGHT x DEPTH (cm) | NUMBER OF METERS |
|--------------------|-----------------------------|------------------|
| NP.MD.SP.40*160*40 | 40 x 160 x 40 | 5 |
| NP.MD.SP.50*160*40 | 50 x 160 x 40 | 5 |
| NP.MD.SP.60*160*40 | 60 x 160 x 40 | 7 |
| NP.MD.SP.40*160*50 | 40 x 160 x 50 | 5 |
| NP.MD.SP.50*160*50 | 50 x 160 x 50 | 5 |
| NP.MD.SP.60*160*60 | 60 x 160 x 60 | 7 |
| NP.MD.SP.40*180*40 | 40 x 180 x 40 | 5 |
| NP.MD.SP.50*180*50 | 50 x 180 x 50 | 5 |
| NP.MD.SP.60*180*60 | 60 x 180 x 60 | 7 |
| NP.MD.SP.40*180*40 | 40 x 180 x 40 | 5 |
| NP.MD.SP.50*180*50 | 50 x 180 x 50 | 5 |
| NP.MD.SP.60*180*60 | 60 x 180 x 60 | 7 |
| NP.MD.SP.40*200*40 | 40 x 200 x 40 | 5 |
| NP.MD.SP.50*200*50 | 50 x 200 x 50 | 5 |
| NP.MD.SP.60*200*60 | 60 x 200 x 60 | 7 |
| NP.MD.SP.40*200*40 | 40 x 200 x 40 | 5 |
| NP.MD.SP.50*200*50 | 50 x 200 x 50 | 5 |
| NP.MD.SP.60*200*60 | 60 x 200 x 60 | 7 |
| NP.MD.SP.90*200*50 | 90 x 200 x 50 | 14 |



FLOOR STANDING OUTDOOR TYPE ENCLOSURES

Floor Standing Outdoor Type Enclosure with Mounting Plate

TECHNICAL SPECIFICATIONS

| | |
|------------------|----------------------|
| Type | Semi-Modular |
| Design | Outdoor Type |
| Area of Use | Industrial |
| Protection Class | IP 65 |
| Colors | RAL 7035 |
| Paint | Electrostatic Powder |
| Depth | 400-500 mm |
| Width | 600-1000 mm |
| Height | 1500-2000 mm |
| Door | Single-Double door |
| Option | with Mounting Plate |

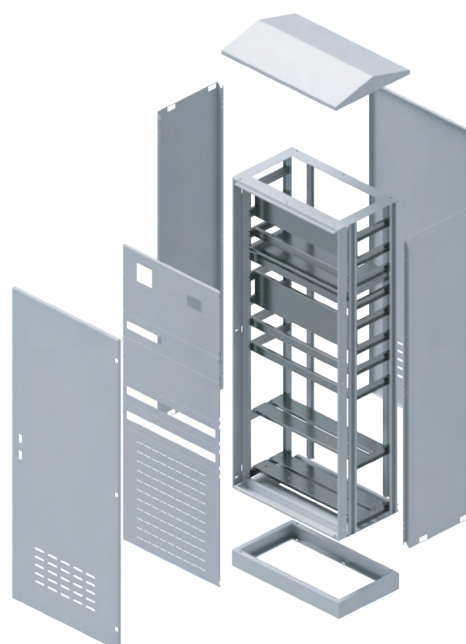


- The base is not included in the height measurements.
- When placing an order, the location of the openings on the doors for air filters, energy analyzers and alarms must be specified.
- Depending on preference, doors can be fitted with glass.
- The door is installed with concealed hinges and an Espagnolette lock.
- The opening direction of the door can be changed.
- To ensure protection against moisture and dust, the doors have a polyurethane seal.
- Asymmetrical roof is used to divert rainwater away from the enclosure.
- Please contact our representative for prices.

Floor Standing Outdoor Type Enclosure with Dead Front

TECHNICAL SPECIFICATIONS

| | |
|------------------|----------------------|
| Type | Semi-Modular |
| Design | Outdoor Type |
| Area of Use | Industrial |
| Protection Class | IP 65 |
| Colors | RAL 7035 |
| Paint | Electrostatic Powder |
| Depth | 400-500 mm |
| Width | 600-900 mm |
| Height | 1500-2000 mm |
| Door | Single-Double door |
| Option | with Dead Front |



WALL MOUNTED OUTDOOR TYPE ENCLOSURES

NILPA

Wall Mounted Outdoor Type Enclosure with Mounting Plate

TECHNICAL SPECIFICATIONS

| | |
|------------------|----------------------|
| Type | Welded |
| Design | Outdoor Type |
| Area of Use | Industrial |
| Protection Class | IP 65 |
| Colors | RAL 7035 |
| Paint | Electrostatic Powder |
| Depth | 250-300 mm |
| Width | 400-900 mm |
| Height | 600-1200 mm |
| Door | Single-Double door |
| Option | with Mounting Plate |

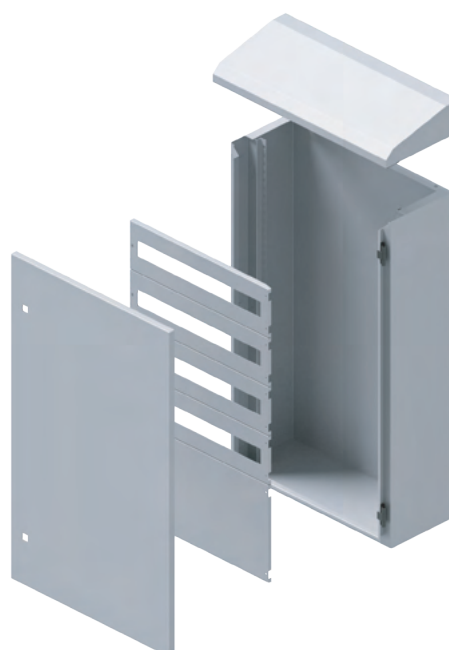


- When placing an order, the location of the openings on the doors for air filters, energy analyzers and alarms must be specified.
- Depending on preference, doors can be fitted with glass.
- To ensure protection against moisture and dust, the doors have a polyurethane seal.
- The door is installed with concealed hinges and an Espagnolette lock.
- The opening direction of the door can be changed.
- Asymmetrical roof is used to divert rainwater away from the enclosure.
- For enclosures with dead front, the dimensions of the dead front and internal cutouts must be specified when placing the order.
- Please contact our representative for prices.

Wall Mounted Outdoor Type Enclosure with Dead Front

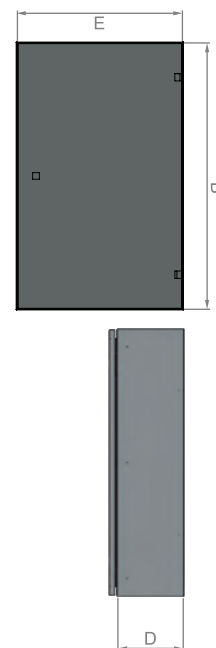
TECHNICAL SPECIFICATIONS

| | |
|------------------|----------------------|
| Type | Welded |
| Design | Outdoor Type |
| Area of Use | Industrial |
| Protection Class | IP 65 |
| Colors | RAL 7035 |
| Paint | Electrostatic Powder |
| Depth | 200 mm |
| Width | 400-900 mm |
| Height | 600-1200 mm |
| Door | Single-Double door |
| Option | with Dead Front |



SURFACE MOUNTED ENCLOSURE WITH MOUNTING PLATE

| TECHNICAL SPECIFICATIONS | |
|--------------------------|----------------------|
| Type | Welded |
| Design | Surface Mounted |
| Area of Use | Industrial |
| Protection Class | IP 55 |
| Colors | RAL 7035 |
| Paint | Electrostatic Powder |
| Depth | 150-300 mm |
| Width | 300-800 mm |
| Height | 400-1000 mm |
| Door | Single-Double door |
| Option | with Mounting Plate |



- When placing an order, the location of the openings on the doors for air filters, energy analyzers and alarms must be specified.
- The opening direction of the door can be changed.
- Wall brackets are available to facilitate the mounting of enclosures to the wall.

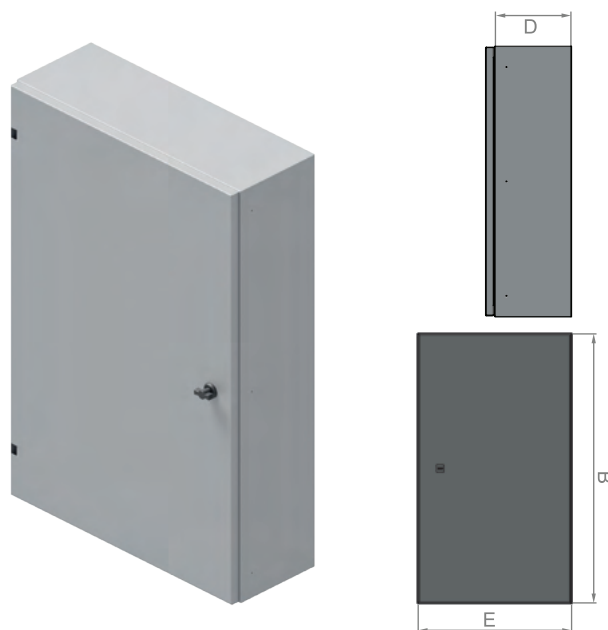
- To ensure protection against moisture and dust, the doors have a polyurethane seal.
- Depending on preference, the doors can be fitted with glass.
- Please contact our representative for prices.



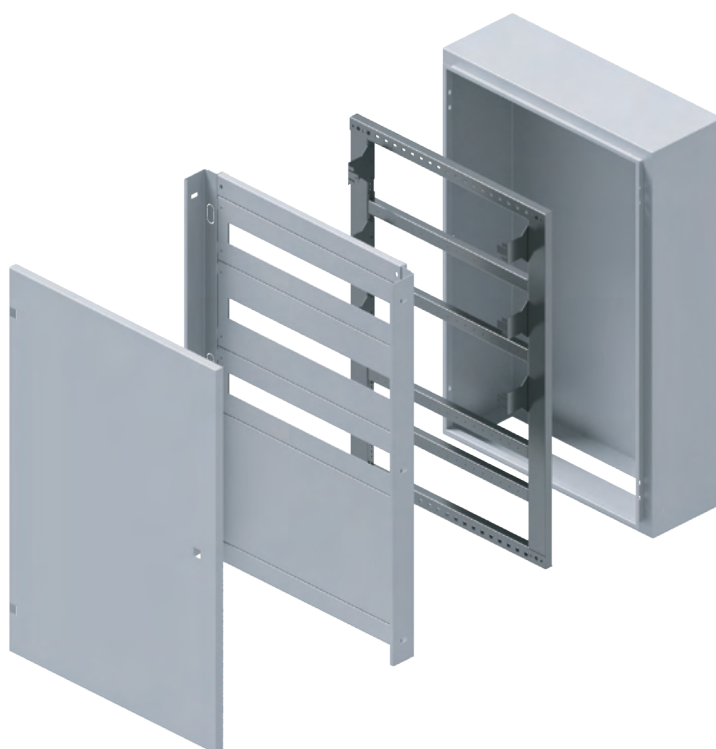
SURFACE MOUNTED ENCLOSURE WITH DEAD FRONT

NILPA

| TECHNICAL SPECIFICATIONS | |
|--------------------------|----------------------|
| Type | Modular |
| Design | Surface Mounted |
| Area of Use | Industrial |
| Protection Class | IP 55 |
| Colors | RAL 7035 |
| Paint | Electrostatic Powder |
| Depth | 150-250 mm |
| Width | 400-800 mm |
| Height | 500-1000 mm |
| Door | Single-Double door |
| Option | with Dead Front |

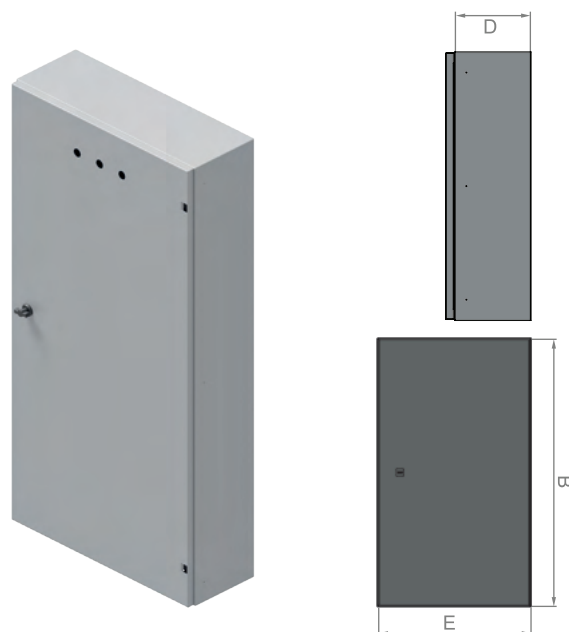


- The design of the dead front can be modified on request.
- For enclosures with dead front, the dimensions of the dead front and internal cutouts must be specified when placing the order.
- Door is equipped with concealed hinges and a butterfly lock.
- Depending on preference, the doors can be fitted with glass.
- The opening direction of the door can be changed.
- Wall brackets are available to facilitate the mounting of enclosures to the wall.
- To ensure protection against moisture and dust, the doors have a polyurethane seal.
- When placing an order, the location of the openings on the doors for air filters, energy analyzers and alarms must be specified.
- Please contact our representative for prices.

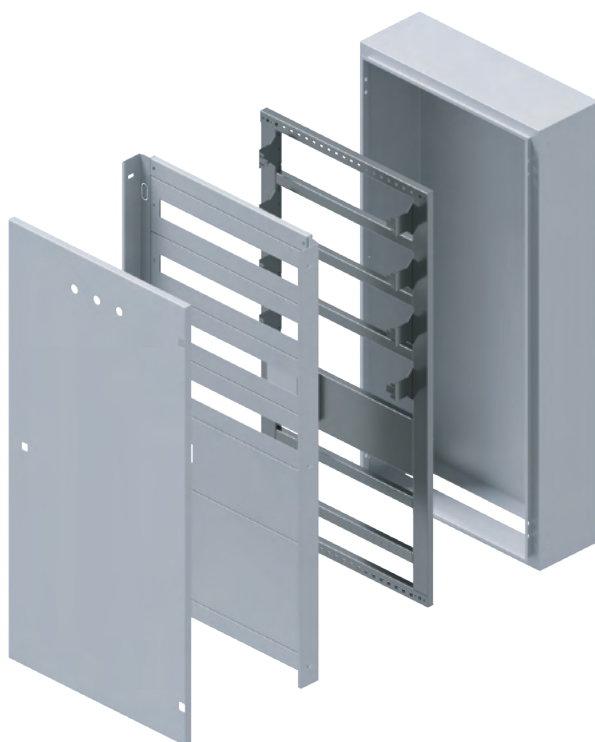


SURFACE MOUNTED SEMI-MODULAR ENCLOSURE WITH DEAD FRONT

| TECHNICAL SPECIFICATIONS | |
|--------------------------|----------------------|
| Type | Welded |
| Design | Surface Mounted |
| Area of Use | Industrial |
| Protection Class | IP 55 |
| Colors | RAL 7035 |
| Paint | Electrostatic Powder |
| Depth | 150-400 mm |
| Width | 400-800 mm |
| Height | 500-1000 mm |
| Door | Single-Double door |
| Option | with Dead Front |



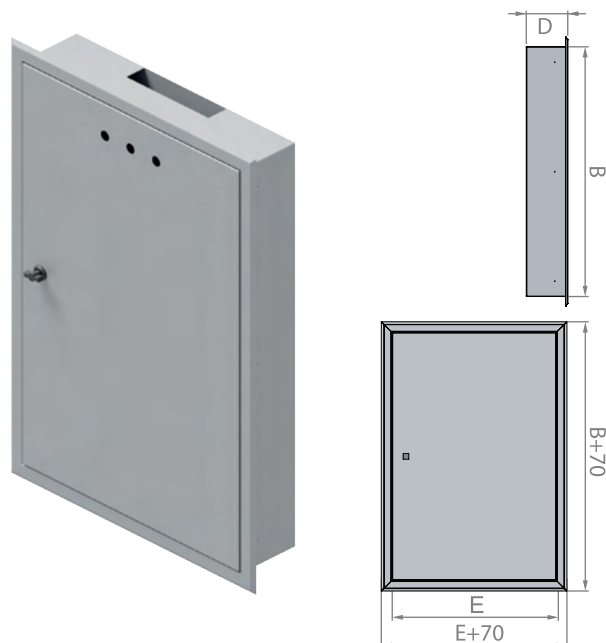
- The design of the dead front can be modified on request, please specify the dimensions of the dead front and internal cut-outs when placing the order.
- When placing an order, the location of the openings on the doors for air filters, energy analyzers and alarms must be specified.
- Door is equipped with concealed hinges and a butterfly lock.
- Wall brackets are available to facilitate the mounting of enclosures to the wall.
- Depending on preference, the doors can be equipped with glass and the direction of opening can be changed.
- To ensure protection against moisture and dust, the doors have a polyurethane seal.
- Please contact our representative for prices.



RECESSED ENCLOSURE WITH MOUNTING PLATE

NILPA

| TECHNICAL SPECIFICATIONS | |
|--------------------------|----------------------|
| Type | Welded |
| Design | Recessed |
| Area of Use | Industrial |
| Protection Class | IP 55 |
| Colors | RAL 7035 |
| Paint | Electrostatic Powder |
| Depth | 100-175 mm |
| Width | 300-800 mm |
| Height | 400-1000 mm |
| Door | Single-Double door |
| Option | with Mounting Plate |

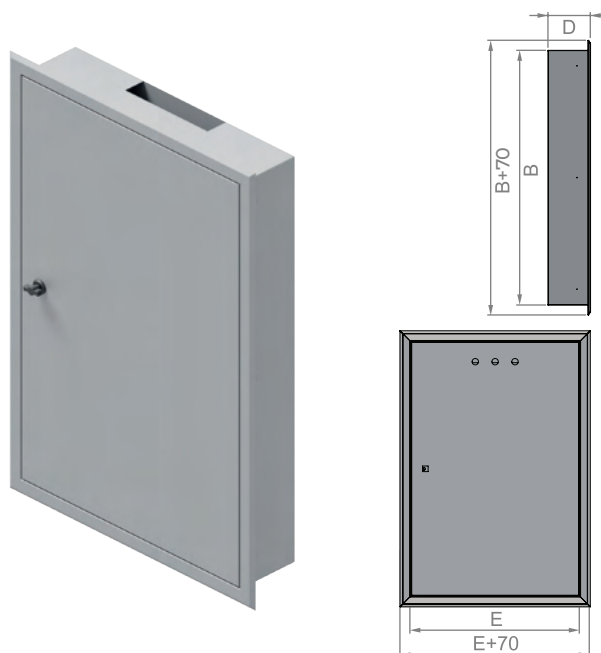


- When placing an order, the location of the openings on the doors for air filters, energy analyzers and alarms must be specified.
- Depending on preference, the doors can be equipped with glass.
- The opening direction of the door can be changed.
- To ensure protection against moisture and dust, the doors have a polyurethane seal.
- Door is equipped with concealed hinges and a butterfly lock.
- Please contact our representative for prices.

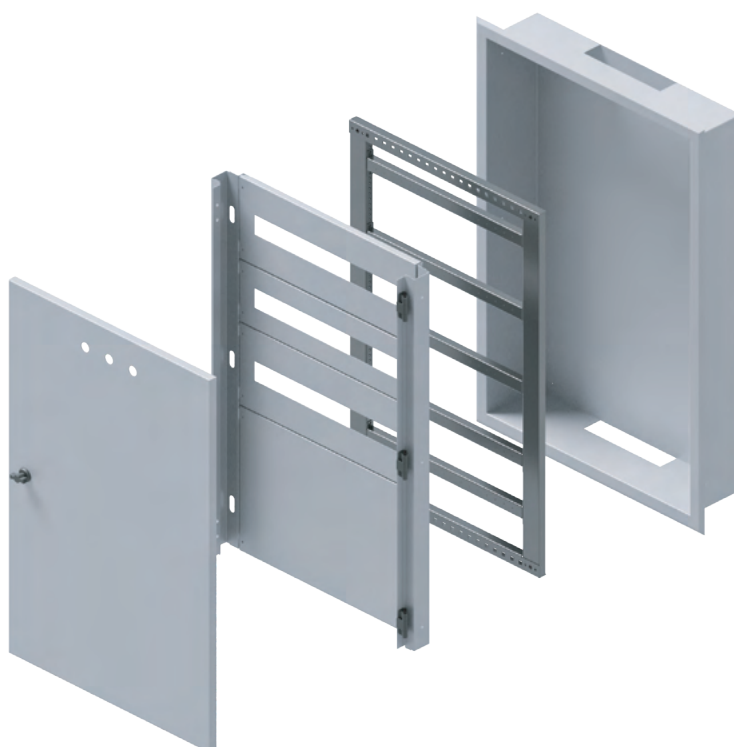


RECESSED ENCLOSURE WITH DEAD FRONT

| TECHNICAL SPECIFICATIONS | |
|--------------------------|----------------------|
| Type | Welded |
| Design | Recessed |
| Area of Use | Industrial |
| Protection Class | IP 55 |
| Colors | RAL 7035 |
| Paint | Electrostatic Powder |
| Depth | 100-175 mm |
| Width | 400-800 mm |
| Height | 500-1000 mm |
| Door | Single-Double door |
| Option | with Dead Front |



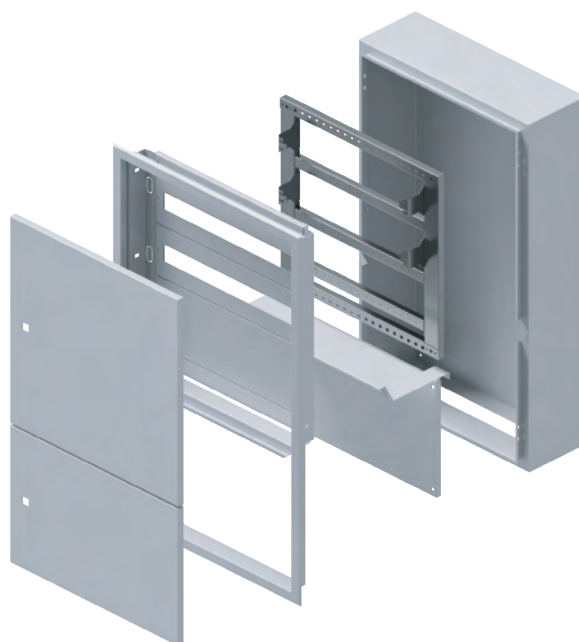
- The design of the dead front can be modified on request.
- Door is equipped with concealed hinges and a butterfly lock.
- When placing an order, the location of the openings on the doors for air filters, energy analyzers and alarms must be specified.
- The opening direction of the door can be changed.
- For enclosures with dead front, the dimensions of the dead front and internal cutouts must be specified when placing the order.
- To ensure protection against moisture and dust, the doors have a polyurethane seal.
- Please contact our representative for prices.



WALL TYPE DISTRIBUTION + LOW VOLTAGE BOARDS

NILPA

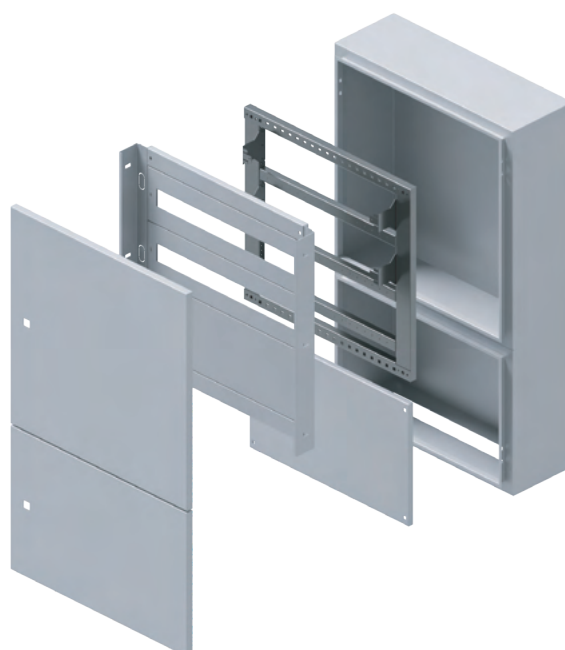
| Recessed Distribution + Low Voltage Board | |
|---|---|
| TECHNICAL SPECIFICATIONS | |
| Type | Welded |
| Design | Recessed |
| Area of Use | Industrial |
| Protection Class | IP 55 |
| Colors | RAL 7035 |
| Paint | Electrostatic Powder |
| Depth | 100-200 mm |
| Width | 600 mm |
| Height | 800-1000 mm |
| Door | Top-Bottom door |
| Option | upper part-distribution lower part-low current |



- When placing an order, the location of the openings on the doors for air filters, energy analyzers and alarms must be specified.
- To ensure protection against moisture and dust, the doors have a polyurethane seal.

- The opening direction of the door can be changed.
- Depending on preference, the doors can be equipped with glass.
- Door is equipped with concealed hinges and a butterfly lock.
- Please contact our representative for prices.

| Surface Mounted Distribution + Low Voltage Board | |
|--|---|
| TECHNICAL SPECIFICATIONS | |
| Type | Welded |
| Design | Surface Mounted |
| Area of Use | Industrial |
| Protection Class | IP 55 |
| Colors | RAL 7035 |
| Paint | Electrostatic Powder |
| Depth | 100-200 mm |
| Width | 600 mm |
| Height | 800-1000 mm |
| Door | Top-Bottom door |
| Option | upper part-distribution lower part-low current |



DESK CONSOLE

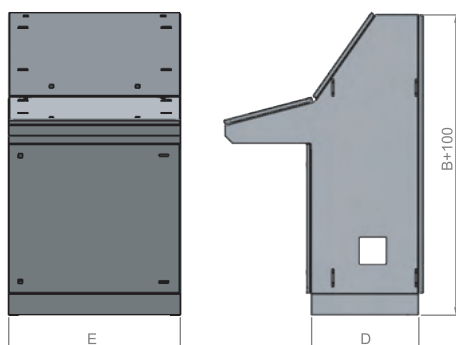
| TECHNICAL SPECIFICATIONS | |
|--------------------------|----------------------|
| Type | Welded |
| Design | Surface Mounted |
| Area of Use | Industrial |
| Protection Class | IP 55 |
| Colors | RAL 7035 |
| Paint | Electrostatic Powder |
| Depth | 500 mm |
| Width | 600-1200 mm |
| Height | 1400 mm |
| Door | Single-Double door |
| Option | with Mounting Plate |



- When placing an order, the location of the openings on the doors for air filters, energy analyzers and alarms must be specified.
- Depending on preference, the doors can be equipped with glass.

- Possible to install a double mounting plate.
- If necessary, you can order a second mounting plate separately.
- Please contact our representative for prices.

| PRODUCT CODE | WIDTH x HEIGHT x DEPTH (cm) |
|------------------|-----------------------------|
| NP.PI.60*140*50 | 60 x 140 x 50 |
| NP.PI.80*140*50 | 80 x 140 x 50 |
| NP.PI.100*140*50 | 100 x 140 x 50 |
| NP.PI.120*140*50 | 120 x 140 x 50 |



PULT-TYPE CONSOLE / KIOSK ENCLOSURE

NILPA

| Pult-Type Console | |
|--------------------------|----------------------|
| TECHNICAL SPECIFICATIONS | |
| Type | Welded |
| Design | Surface Mounted |
| Area of Use | Industrial |
| Protection Class | IP 55 |
| Colors | RAL 7035 |
| Paint | Electrostatic Powder |
| Depth | 500 mm |
| Width | 400-1200 mm |
| Height | 1200 mm |
| Door | Single-Double door |
| Option | with Mounting Plate |



For Pult Type Consoles,

- When placing an order, the location of the openings on the doors for air filters, energy analyzers and alarms must be specified.
- Depending on preference, the doors can be equipped with glass.
- Possible to install a double mounting plate.
- If necessary, you can order a second mounting plate separately.

For Kiosk Enclosures,

- The keyboard and monitor screen can be modified to suit your preferences.
- It can be produced with castors and can be fixed depending on your request.
- Please contact our representative for prices.

| Kiosk Enclosure | |
|--------------------------|----------------------|
| TECHNICAL SPECIFICATIONS | |
| Type | Welded |
| Design | Floor Standing |
| Area of Use | Industrial |
| Protection Class | IP 55 |
| Colors | RAL 7035 |
| Paint | Electrostatic Powder |
| Depth | 150-200 mm |
| Width | 600 mm |
| Height | 1400-1500 mm |
| Door | Back door |
| Option | with Mounting Plate |



ELEVATOR CONTROL BOARDS / CONSTRUCTION ENCLOSURES

| Elevator Control Boards | |
|--------------------------|-----------------------|
| TECHNICAL SPECIFICATIONS | |
| Type | Welded (spot welding) |
| Design | Distribution Board |
| Area of Use | Industrial |
| Protection Class | IP 55 |
| Colors | RAL 7035 |
| Paint | Electrostatic Powder |
| Depth | 120 mm |
| Width | 350 mm |
| Height | 450 mm |
| Door | Single door |
| Option | with Dead Front |



- Depending on your preference, construction enclosures can be manufactured with or without socket.
- Please contact our representative for prices.

| Construction Enclosures | |
|--------------------------|----------------------|
| TECHNICAL SPECIFICATIONS | |
| Type | Welded |
| Design | Distribution Board |
| Area of Use | Industrial |
| Protection Class | IP 55 |
| Colors | RAL 7035 |
| Paint | Electrostatic Powder |
| Depth | 200-400 mm |
| Width | 400-900 mm |
| Height | 800-1200 mm |
| Door | Double door |
| Option | with Mounting Plate |



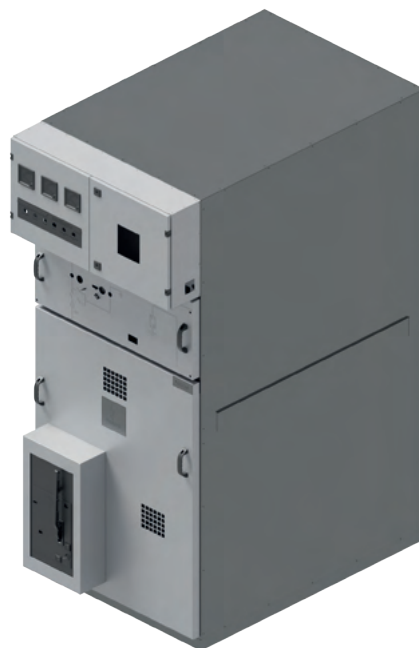
MEDIUM-VOLTAGE ENCLOSURE / SUBSTATION KIOSKS

NILPA

Medium-Voltage Enclosure

TECHNICAL SPECIFICATIONS

| | |
|------------------|----------------------|
| Type | Floor Standing |
| Design | Modular |
| Area of Use | Industrial |
| Protection Class | IP 55 |
| Colors | RAL 7035 |
| Paint | Electrostatic Powder |
| Height | 1800 mm |



- Please contact our representative for prices.

Substation Kiosks

TECHNICAL SPECIFICATIONS

| | |
|------------------|----------------------|
| Type | Welded |
| Design | Modular |
| Area of Use | Industrial |
| Protection Class | IP 55 |
| Colors | RAL 7035 |
| Paint | Electrostatic Powder |
| Door | Double Door |



STAINLESS-STEEL ENCLOSURES

Stainless-Steel Enclosure with Mounting Plate

TECHNICAL SPECIFICATIONS

| | |
|------------------|---------------------------|
| Type | Welded |
| Design | Surface Mounted |
| Area of Use | Industrial |
| Protection Class | IP 55 |
| Material | 304 / 316 stainless steel |
| Door | Single/Double door |
| Option | with Mounting Plate |



- When placing an order, the location of the openings on the doors for air filters, energy analyzers and alarms must be specified.
- The opening direction of the door can be changed.
- Door is equipped with concealed hinges and a butterfly lock.

- Please specify the stainless-steel grade when placing your order.
- Please contact our representative for prices.

Semi-Modular Stainless Steel Enclosure with Mounting Plate

TECHNICAL SPECIFICATIONS

| | |
|------------------|---------------------|
| Type | Semi-Modular |
| Design | Floor Standing |
| Area of Use | Industrial |
| Protection Class | IP 55 |
| Material | 304 Stainless Steel |
| Door | Single/Double door |
| Option | with Mounting Plate |



ABS ENCLOSURES

NILPA

ABS Enclosure with Opaque Door and Dead Front

TECHNICAL SPECIFICATIONS

| | |
|--------------------|-----------------|
| Design | Surface Mounted |
| Area of Use | Industrial |
| Protection Class | IP 65 |
| Material | ABS |
| Door | Single Door |
| Colors | RAL 7035 |
| Thermal resistance | -40°C / +80°C |



ABS Enclosure with Clear Door and Dead Front

TECHNICAL SPECIFICATIONS

| | |
|--------------------|-----------------|
| Design | Surface Mounted |
| Area of Use | Industrial |
| Protection Class | IP 65 |
| Material | ABS |
| Door | Single Door |
| Colors | RAL 7035 |
| Thermal resistance | -40°C / +80°C |



ABS Enclosure with Opaque Door

TECHNICAL SPECIFICATIONS

| | |
|--------------------|-----------------|
| Design | Surface Mounted |
| Area of Use | Industrial |
| Protection Class | IP 65 |
| Material | ABS |
| Door | Single Door |
| Colors | RAL 7035 |
| Thermal resistance | -40°C / +80°C |



ABS Enclosure with Clear Door

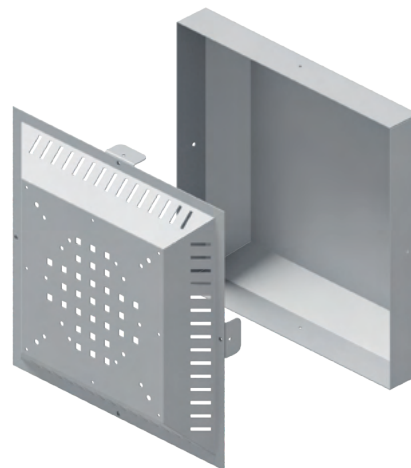
TECHNICAL SPECIFICATIONS

| | |
|--------------------|-----------------|
| Design | Surface Mounted |
| Area of Use | Industrial |
| Protection Class | IP 65 |
| Material | ABS |
| Door | Single Door |
| Colors | RAL 7035 |
| Thermal resistance | -40°C / +80°C |



ROOF-TYPE VENTILATION FAN / VENTILATION FILTERS / DATA POCKETS

| ROOF-TYPE VENTILATION FAN | |
|---------------------------|-----------------------|
| TECHNICAL SPECIFICATIONS | |
| Design | Semi-Modular |
| Area of Use | Industrial |
| Protection Class | IP 32 |
| Colors | RAL 7035 |
| Paint | Electrostatic Powder |
| Plate Thickness | 1,5 mm |
| Material | DKP |
| PRODUCT CODE | PRODUCT NAME |
| FAN | Empty Fan Module |
| FAN.300 | 300m ³ FAN |
| FAN.600 | 600m ³ FAN |
| FAN.900 | 900m ³ FAN |



| VENTILATION FILTERS | |
|--------------------------|------------------------|
| TECHNICAL SPECIFICATIONS | |
| Protection Class | IP 54 |
| Colors | RAL 7035 |
| Material | Plastic |
| PRODUCT CODE | PRODUCT NAME |
| MEN.105*105 | 105 x 105 VENT. FILTER |
| MEN.150*150 | 150 x 150 VENT. FILTER |
| MEN.250*250 | 250 x 250 VENT. FILTER |
| MEN.325*325 | 325 x 325 VENT. FILTER |



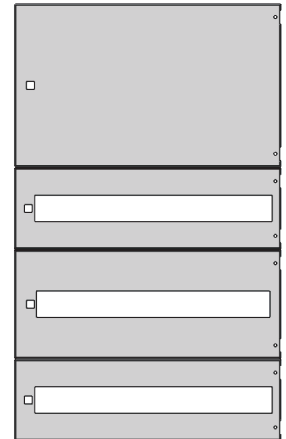
| DATA POCKETS | |
|--------------------------|----------------------|
| TECHNICAL SPECIFICATIONS | |
| Type | Wall-mounted |
| Area of Use | Industrial |
| Protection Class | IP 55 |
| Colors | Ral 7035 |
| Paint | Electrostatic Powder |
| Plate Thickness | 1 mm |
| Size | Optional |
| PRODUCT CODE | SIZE |
| PC.1 | 175 x 200 x 25 |
| PC.2 | 225 x 230 x 25 |



DEAD FRONT / MOUNTING PLATE

NILPA

| DEAD FRONT | |
|--------------------------|-----------------------------|
| TECHNICAL SPECIFICATIONS | |
| Type | Floor standing/Wall-mounted |
| Area of Use | Industrial |
| Protection Class | IP 55 |
| Colors | Ral 7035 |
| Paint | Electrostatic Powder |
| Plate Thickness | 1 mm |
| Size | Optional |



| MOUNTING PLATE | |
|--------------------------|-----------------------------|
| TECHNICAL SPECIFICATIONS | |
| Type | Floor standing/Wall-mounted |
| Design | Modular |
| Area of Use | Industrial |
| Protection Class | IP 55 |
| Plate Thickness | 1,5 mm |
| Material | Galvanized steel |
| Size | Optional |



- Please contact our representative for prices.

RACK CABINET / VOLTAGE REGULATOR ENCLOSURE

| Rack Cabinet | |
|--------------------------|-----------------------------|
| TECHNICAL SPECIFICATIONS | |
| Type | Floor Standing/Wall-mounted |
| Design | Modular |
| Area of Use | Industrial |
| Protection Class | IP 55 |
| Paint | Electrostatic Powder |
| Material | Dkp - Galvanized Steel |
| Size | Optional |



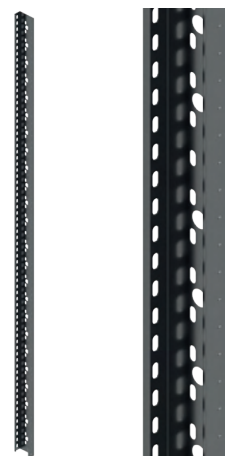
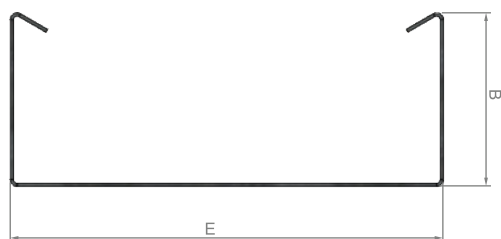
- It is designed as a modular system compatible with ready-to-assemble system.
- The opening direction of the door can be changed.
- Depending on the customer's needs, the product is available for both indoor and outdoor use.

- We provide assistance in selecting the right fan module to protect the product from overheating.
- Electrostatic Powder Coating is used.
- There is a cable pass-through at the bottom of the housing.
- Please contact our representative for prices.

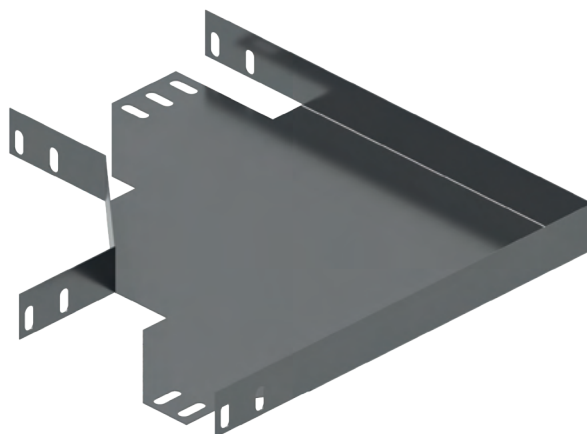
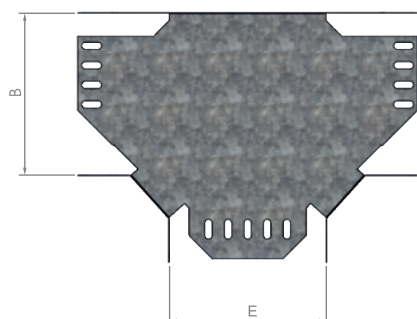
| Voltage Regulator Enclosure | |
|-----------------------------|-----------------------------|
| TECHNICAL SPECIFICATIONS | |
| Type | Floor Standing/Wall-mounted |
| Design | Modular |
| Area of Use | Industrial |
| Protection Class | IP 55 |
| Paint | Electrostatic Powder |
| Material | Dkp - Galvanized Steel |
| Size | Optional |



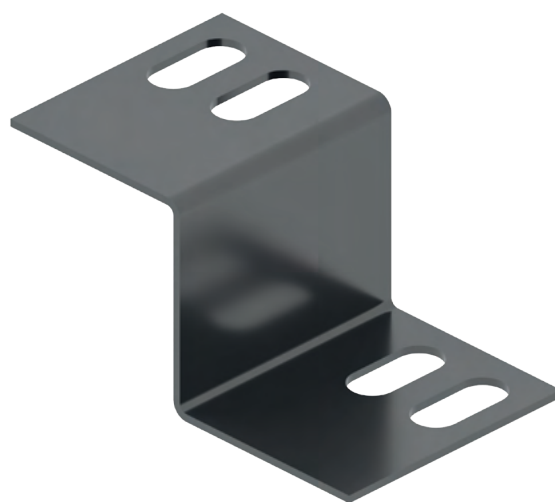
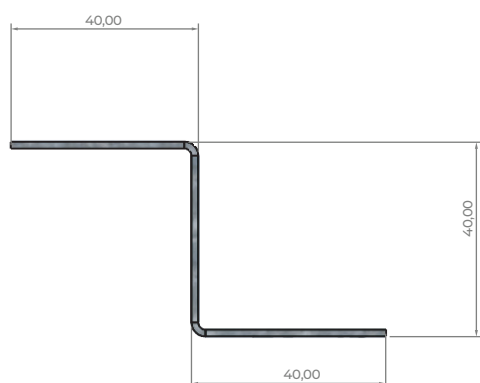
Heavy-duty Cable Trays



Tray Bends



Tray Reducer





TÜRK PATENT
T.C. SİNAİ MÜLKİYET KURUMU

MARKA TESCİL BELGESİ
No: 2023 032725 - Ticaret - Hizmet

NİLPA
Elektrik Pano Sistemleri

Marka Sahibi
NİLAS ÇELİK SANAYİ TİCARET ANONİM ŞİRKETİ

Mal / Hizmet Sınıfları
06, 09, 35, 37, 42

Bu marka, 6769 sayılı Sınai Mülkiyet Kanunu kapsamında,
15.03.2023 tarihinden itibaren 10 yıl süreyle korunmak üzere,
10.07.2024 tarihinde tescil edilmiştir.


Prof. Dr. M. Zeki DURAK
Kurum Başkanı



TÜRK PATENT
T.C. SİNAİ MÜLKİYET KURUMU

MARKA TESCİL BELGESİ
No: 2022 079578 - Ticaret - Hizmet

NİLPA
Elektrik Pano Sistemleri

Marka Sahibi
NİLAS ÇELİK SANAYİ TİCARET ANONİM ŞİRKETİ

Mal / Hizmet Sınıfları
06, 07, 09, 20, 35, 40

Bu marka, 6769 sayılı Sınai Mülkiyet Kanunu kapsamında,
03.06.2022 tarihinden itibaren 10 yıl süreyle korunmak üzere,
16.11.2023 tarihinde tescil edilmiştir.


Prof. Dr. M. Zeki DURAK
Başkan



Lvt
TEST LABORATUVARLARI LTD. ŞTİ.

TEST SERTİFİKASI / TEST CERTIFICATE

No : C-23-2611-R0

Müşteri : NİLAS ÇELİK SANAYİ TİCARET ANONİM ŞİRKETİ

İmalatçı : NİLAS ÇELİK SANAYİ TİCARET ANONİM ŞİRKETİ

Ürün Tanımı : 4000 A ACB GİRİŞLİ ALÇAK GERİLİM ANAHTARLAMA ve KONTROL DÜZENİ

Marka : NİLPA ELEKTRİK PANO SİSTEMLERİ

Teknik Veri : I_n: 4000 A, U_n: 1000 V, U_{imp}: 12.0 kV, I_{sc}: 65 kA (Ana Bara), I_{sc}: 40 kA (Toprak Barası), I_{sc}: 65 kA (ABB 4000 A ACB), I_{sc}: 36 kA (ABB 4000 A ACB), Form 4b

Test Standardı : TS EN IEC 61439-1:2021 + AC:2022, TS EN IEC 61439-2:2021

Konu : TEST SONUCU (OLUMLU)

Uygulanan Test(ler) : Sıcaklık Artışın Doğrulaması, Dielektrik Özellikler, Yalıtım Arızaları & Yüzeysel Kaçak Yolu Uzunlukları, Mekanik Çalışma, Elektrik Çarpmasına Karşı Koruma ve Koruma Devrelerinin Bütünlüğü, Kasa Devre Dayanımı, Dayanıklılık, Anormal Isıya ve Dahili Elektrik Etkilerinden Kaynaklanan Yangına Dayanıklılığın Doğrulaması, Dahili Elektriksel Devreler ve Bağlantılar, Harici İstisnalar için Bağlantı Uçları, Anahtarlama Cihazlarının ve Bileşenlerinin Birleştirilmesi

Test Rapor Numarası : 23-2611-R0-N1-1

Sertifika Tarihi : 09.01.2024

Deney Sorumlusu : Bölüm Müdürü


Cem AKDOĞAN


Ata GÜLLÜ ARSLANLI



Sertifika bilgileri kontrol için QR kodunu kullanın.
You can check the certificate details by QR code.



www.lvt.com.tr

Sarıyer Modern Kentsel Yerleşim Bölgesi, B14.4. Cad. No: 9 K. Kat: 9 - ANKARA - TÜRKİYE
Tel : +90 312 818 19 26 - Faks : +90 312 818 19 27 - e-mail : info@lvt.com.tr

FRT.88 / Rev01 / 1019



Allianz Teknik



TÜRK AKADEMİ
T.C. SİNAİ MÜLKİYET KURUMU

ALLIANZ TEKNİK DEPREM & YANGIN TEST VE EĞİTİM MERKEZİ
Türk-Alman Üniversitesi, Şahinkaya Cad. No:90, 34800 Beşiktaş / İSTANBUL
Tel: 0216 556 6351 E-posta: allianteknik@allianz.com.tr
Web: www.allianteknik.com.tr

TEST RAPORU
TEST REPORT

Müşteri Adı/Adresi : NİLAS ÇELİK SANAYİ TİCARET ANONİM ŞİRKETİ
Saklık Mh. Soğuksu Cad. Integral Endüstri Blok No:1A Ergene/Tekirdağ

Teknik Numarası : AZTEK-24-048

Order No : SİRKİ Test A.G. Elektrik Panosu (Model No: 5000A FORM4B)

Numunenin Adı ve Tanımı : Ağırlık 341 kg

Numunenin Kabul Tarihi : 21.05.2024
(The Date Of Receipt Of Test Item)

Uygulanan Standard / Metod : TS EN/IEC 60068-3-3

Açıklamalar : Allianz Teknik yukarıda belirtilen ürünün TS EN/IEC 60068-3-3 standardının gereklilikleri ile uyumlu olarak test edildiğini doğrular.

Deneyin Yapıldığı Tarih : 24.05.2024
(Date Of Test)

Raporun Sayfa Sayısı : 40
(Number Of Pages Of The Report)

Deney laboratuvarı olarak faaliyet gösteren Allianz Teknik, TÜRKAK'tan AB-1803-T akreditasyonuna dayalı numarası ile TS EN ISO/IEC 17025:2017 standardına göre akredite edilmiştir.

Allianz Teknik accredited by TÜRKAK under registration number AB-1803-T for EN ISO/IEC 17025:2017 as test laboratory.

Türk Akademi Kurumu(TÜRKAK) deney raporlarının tanınması konusunda Avrupa Akreditasyon Birliği(EA) ile Çok Taraflı Anlaşma ve Uluslararası Laboratuvar Akreditasyon Birliği(ILAC) ile karşılıklı tanıma anlaşmaları imzalanmıştır.

Turkish Accreditation Agency (TÜRKAK) is a signatory to the European co-operation for Accreditation (EA) Multilateral Agreement (MLA) and to the International Laboratory Accreditation Cooperation (ILAC) Mutual Recognition Arrangement (MRA) for the recognition of test reports.

Deney ve/veya ölçüm amaçları, gerekliliği için belirtilenlerdir (olması halinde) ve deney metadani bu raporun tamamlayıcı kısmı olan takip eden sayfalarda verilmektedir.

The test and/or measurement results, the uncertainties (if applicable) with confidence probability and test methods are given on the following pages which are part of this report.

Bu rapor özel deney talebi üzerine hazırlanmıştır ve standartlara uygunluk belgesi niteliğinde değildir. Partiyi temsil etmez, ayrıca işin, reklam ve belgelerde kullanılabilirliği konusunda sorumluluk kabul edilmez.

This test report was prepared upon customer's request, can not be used as certificate of conformity to standards, does not represent a batch and can not be used as conformity documents for advertisements and procurements.

Beyanlat Gayrimenkul Yatırım İnşaat Turizm Sanayi ve Tic. A.Ş. bundan böyle rapor içeriğinde "Allianz Teknik" olarak anılacaktır.

Beşiktaş Gayrimenkul Yatırım İnşaat Turizm Sanayi ve Tic. A.Ş. hereinafter to be referred to as "Allianz Teknik" in the content of the report.

"Allianz Teknik" Allianz SE'nin tescilli bir markasıdır. Bu Rapor Allianz Teknik'in yazılı izni olmadan kopyalanamaz veya çoğaltılamaz. Belirtilen yönde görünüş herhangi bir işlem gerektirir ya da işlem gerektirmez ya da işlem gerektirir ya da işlem gerektirmez. Bu rapor yalnızca rapor içeriğinde belirtilen test numarası için geçerlidir.

"Allianz Teknik" is a registered trademark of Allianz SE. This Report cannot be copied or reproduced without Allianz Teknik's written permission. Any such purported operation shall be void without such written consent. Reports without signature and stamp are not valid. This report is valid exclusively only for mentioned test samples.

Mühür/Kimse : Deney Sorumlusu : Berkan Aldırmaz

Tarih : 06.09.2024

Person In Charge Of The Test : Berkan Aldırmaz

Onaylayan / Tarih : Erkan Özgök

UYGUNLUK BEYANI ONAY SERTİFİKASI

DECLARATION OF CONFORMITY APPROVAL CERTIFICATE

Belirli Gerilim Sınırları İçin Tasarlanan Elektrikli Ekipman ile İlgili Yönetmelik - 2014/35/AB

The Low Voltage Directive - 2014/35/EU

Belge Numarası
Certificate Number
Kuruluşun Adı
Name of Company
Kuruluşun Adresi
Address of Company
Üretim Yeri Adı
Name of Manufacture
Üretim Yeri Adresi
Address of Manufacture
Örün Tanımı
Product Description
Ticari Marka
Trade Mark
Model
Model

- : CE 24-0005-02/R1
- : NİLAS ÇELİK SANAYİ TİCARİET ANONİM ŞİRKETİ
- : SAĞLIK MAH. SOĞUKSU CAD. INTEGRAL ENDÜSTRİ BLOK
- : NİLAS ÇELİK SANAYİ TİCARİET ANONİM ŞİRKETİ
- : SAĞLIK MAH. SOĞUKSU CAD. INTEGRAL ENDÜSTRİ BLOK
- : NO:1A ERGENE / TEKİRDAĞ
- : AG ANAHTARLAMA DÜZENİ VE KONTROL DÜZENİ PANOLARI
- : LOW-VOLTAGE SWITCHGEAR AND CONTROLGEAR ASSEMBLIES
- : NİLPA ELEKTRİK PANO SİSTEMLERİ
- : 4000 A ABB ACB GİRİŞLİ ALÇAK GERİLİM ANAHTARLAMA VE KONTROL DÜZENİ
- : 4000A ABB 1878 ACB INPUT LOW VOLTAGE SWITCHGEAR AND CONTROLGEAR

İlgili Yönetmelikler/
Relevant Directives(s)

2014/35/AB BELİRLİ GERİLİM SINIRLARI İÇİN TASARLANAN
ELEKTRİKİ EKİPMAN İLE İLGİLİ YÖNETMELİK
2014/35/EU THE LOW VOLTAGE DIRECTIVE
TS EN IEC 61436-1:2021-VAC:2022, IEC 61436-1:2020/VOR2:2023,
TS EN IEC 61436-2-2:2021, IEC61436-2:2020

Rapor Numarası
Report Number
İlk Belgelendirme Tarihi
First Certification Date
Yeni Yayın Tarihi
New Issue Date
Geçerlilik Tarihi
Validity Date

23-2611-R0-N11
11.01.2024
12.02.2025
11.02.2026

Kartokuda bulunan belge geçerliliğini
kontrol edebilirsiniz.
(You can check the validity of the
certificate by using QR code.)

12 / 02 / 2025
Ara Güneş AŞLARI
Genel Müdürü
Signature

LVT TEST LABORATUVARLARI LTD. ŞTİ. Sayı: Model: Karesizlik: San. Stk. 4, Cad. No: 9 Sayı: Ç. Karesizlik: 0.012 13 25 - 26 www.lvt.com.tr - info@lvt.com.tr

Sayfa 1/1



Enclosure, Panel and Cabinet Systems



Sağlık District Soğuksu Street
No 1 / Al Ergene / Tekirdağ



+90 282 686 77 33
+90 532 305 37 59



info@nilpapano.com



www.nilpapano.com