



Enclosure, Panel and Cabinet Systems

Controlled **Power**, Continuous **Energy**

www.nilpapano.com

ABOUT US

Our company Nilpa Pano A.Ş. was established in 2022 in line with our desire to take part as a manufacturer in the electricity sector, which we have been in since 2003. The main purpose of our Nilpa Pano brand within our company is to provide professional solutions to the needs of our customers in this field with our wide range of panel products that we produce in our facility located in Tekirdağ/Ergene.

Among our standard and specially designed products in our Nilpa Pano production area; Modular Standing Type Enclosures, Wall Type Enclosures, External Enclosures, Stainless Steel Enclosures, ABS Enclosures, Control Panels, Cable Trays, Rack Cabinets and Regulator Enclosures. In addition to these, special production enclosures can also be manufactured upon request.

We prioritise quality philosophy in our production processes by targeting maximum customer satisfaction. In this context, we offer our superior product quality in accordance with ISO 9001, ISO 14001 and OHSAS 18001 standards in accordance with environmental and occupational health and safety management systems.

We take our quality and business processes to the next level every day by increasing our R&D investments and closely follow the technological developments and innovations in the world. We attach importance to developing our production processes in line with the expectations by identifying the needs in advance, adopting the understanding of innovation and incorporating it into our work.

As Nilpa Pano, we are actively continuing our export activities in line with our goal of having a say in the world market. We plan to continue our export policy in many different regions of the world by expanding our trade volume.

Since the day we were founded, we continue to be the long-term solution partner of our customers in line with our goal of being the first choice in the sector and to provide services with confidence.

www.nilpapano.com



MISSION

Our main mission is to offer our customers the most innovative solutions of the highest quality by advancing with the goal of zero error in our production processes and by closely following technological developments in the world.



**THANKS FOR
CHOOSING US!**

VISION

Our vision is to be an internationally competitive, leading, reliable and sought-after brand in the power industry.

WHY CHOOSE US?



Wide range of products

We offer the ability to customize your orders with a wide range of products tailored specifically to your needs, allowing you to meet all your needs in one place.



Customer satisfaction

We prioritize customer satisfaction and ensure timely and smooth delivery of your orders without compromising on product quality.



Experienced staff

Our company, which always prioritizes the needs of our customers, employs experienced and qualified employees who are constantly upgrading their qualifications.



Innovative technology

We offer you the most innovative solutions thanks to our state-of-the-art equipment that meets the latest technological trends.



Quality assured products

We provide our customers with technical support in the various applications of our type-tested panels, which we produce in accordance with TS EN IEC 62208: 2023.

INDEX

N SERIES - FLOOR STANDING MODULAR ENCLOSURES

FLOOR STANDING MODULAR ENCLOSURE WITH MOUNTING PLATE	1
FLOOR STANDING MODULAR ENCLOSURE WITH DEAD FRONT	2
DOUBLE-DOOR FLOOR STANDING MODULAR ENCLOSURE WITH MOUNTING PLATE	3
MODULAR SYSTEM ENCLOSURE FRAME	4
FLOOR STANDING MODULAR ENCLOSURE FRAME WITH MOUNTING PLATE	5
FLOOR STANDING MODULAR METER BOX	6

I SERIES – OUTDOOR TYPE ENCLOSURE

FLOOR STANDING OUTDOOR TYPE ENCLOSURE WITH MOUNTING PLATE	7
FLOOR STANDING OUTDOOR TYPE ENCLOSURE WITH DEAD FRONT	7
WALL MOUNTED OUTDOOR TYPE ENCLOSURE WITH MOUNTING PLATE	8
WALL MOUNTED OUTDOOR TYPE ENCLOSURE WITH DEAD FRONT	8

L SERIES – WALL MOUNTED ENCLOSURE

SURFACE MOUNTED ENCLOSURE WITH MOUNTING PLATE	9
SURFACE MOUNTED ENCLOSURE WITH DEAD FRONT	10
SURFACE MOUNTED SEMI-MODULAR ENCLOSURE WITH DEAD FRONT	11
RECESSED ENCLOSURE WITH MOUNTING PLATE	12
RECESSED ENCLOSURE WITH DEAD FRONT	13
SURFACE MOUNTED DISTRIBUTION + LOW VOLTAGE BOARD	14
RECESSED DISTRIBUTION + LOW VOLTAGE BOARD	14

P SERIES- CONTROL PANEL

DESK CONSOLE	15
PULT-TYPE CONSOLE	16
KIOSK ENCLOSURE	16

A SERIES – CUSTOM ENCLOSURES

ELEVATOR CONTROL BOARDS	17
ENCLOSURE FOR CONSTRUCTION SITE INSTALLATION	17
MEDIUM-VOLTAGE ENCLOSURE	18
SUBSTATION KIOSKS	18

S SERIES – STAINLESS-STEEL ENCLOSURES

STAINLESS-STEEL ENCLOSURE WITH MOUNTING PLATE	19
SEMI-MODULAR STAINLESS-STEEL ENCLOSURE WITH MOUNTING PLATE	19

B SERIES – ABS ENCLOSURES

ABS ENCLOSURE WITH OPAQUE DOOR AND DEAD FRONT	20
ABS ENCLOSURE WITH CLEAR DOOR AND DEAD FRONT	20
ABS ENCLOSURE WITH OPAQUE DOOR	20
ABS ENCLOSURE WITH CLEAR DOOR	20

C SERIES - ADDITIONAL PRODUCTS

ROOF TYPE VENTILATION FAN	21
VENTILATION FILTERS	21
DATA POCKETS	21
DEAD FRONT / MOUNTING PLATE	22

R SERIES – VOLTAGE REGULATOR ENCLOSURE AND RACK CABINET

RACK CABINET	23
VOLTAGE REGULATOR ENCLOSURE	23

K SERIES - CABLE TRAYS

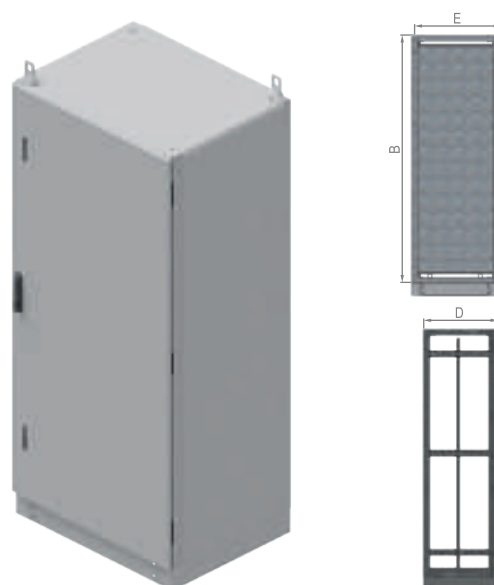
HEAVY DUTY CABLE TRAYS	24
TRAY BENDS	24
TRAY REDUCER	24

OUR CERTIFICATIONS

25

FLOOR STANDING MODULAR ENCLOSURE WITH MOUNTING PLATE

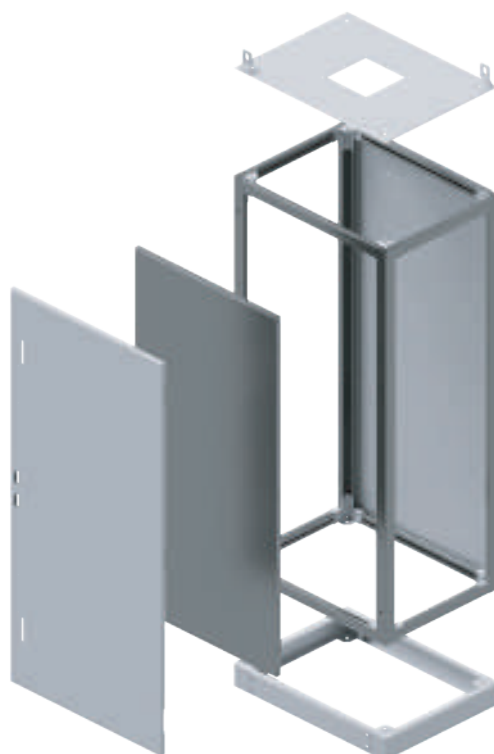
TECHNICAL SPECIFICATIONS	
Type	Floor Standing
Design	Modular
Area of Use	Industrial
Protection Class	IP 55
Colors	RAL 7035
Paint	Electrostatic Powder
Depth	400-600 mm
Width	400-800 mm
Height	1600-2000 mm
Door	Single Door
Option	with Mounting Plate



- The base is not included in the height measurements.
- When placing an order, the location of the openings on the doors for air filters, energy analyzers and alarms must be specified.
- Depending on preference, doors can be fitted with glass.
- The door is installed with concealed hinges and an Espagnolette lock.
- The rear and side plates have a similar design.

- The opening direction of the door can be changed.
- To ensure protection against moisture and dust, the doors have a polyurethane seal.
- Front and rear doors are available.
- Thanks to the modular design, enclosures can be connected in rows.
- Please contact our representative for prices.

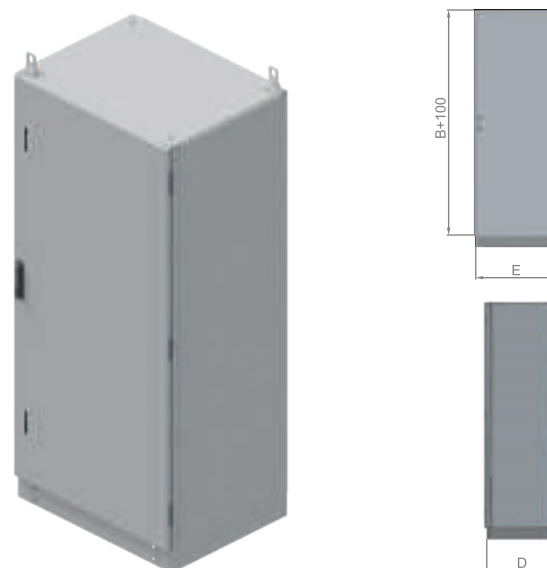
PRODUCT CODE	WIDTH x LENGTH x DEPTH (cm)	MOUNTING PLATE (mm)
NP.MD.TS.40*160*40	40 x 160 x 40	348 x 1350
NP.MD.TS.50*160*40	50 x 160 x 40	448 x 1350
NP.MD.TS.60*160*40	60 x 160 x 40	548 x 1350
NP.MD.TS.40*160*50	40 x 160 x 50	348 x 1350
NP.MD.TS.50*160*50	50 x 160 x 50	448 x 1350
NP.MD.TS.60*160*50	60 x 160 x 50	548 x 1350
NP.MD.TS.40*180*40	40 x 180 x 40	348 x 1650
NP.MD.TS.50*180*40	50 x 180 x 40	448 x 1650
NP.MD.TS.60*180*40	60 x 180 x 40	548 x 1650
NP.MD.TS.40*180*50	40 x 180 x 50	348 x 1650
NP.MD.TS.50*180*50	50 x 180 x 50	448 x 1650
NP.MD.TS.60*180*50	60 x 180 x 50	548 x 1650
NP.MD.TS.70*180*50	70 x 180 x 50	648 x 1650
NP.MD.TS.50*200*40	50 x 200 x 40	448 x 1850
NP.MD.TS.60*200*40	60 x 200 x 40	548 x 1850
NP.MD.TS.70*200*40	70 x 200 x 40	648 x 1850
NP.MD.TS.50*200*50	50 x 200 x 50	448 x 1850
NP.MD.TS.60*200*50	60 x 200 x 50	548 x 1850
NP.MD.TS.70*200*50	70 x 200 x 50	648 x 1850
NP.MD.TS.80*200*50	80 x 200 x 50	748 x 1850
NP.MD.TS.70*200*60	70 x 200 x 60	648 x 1850
NP.MD.TS.80*200*60	80 x 200 x 60	748 x 1850



FLOOR STANDING MODULAR ENCLOSURE WITH DEAD FRONT

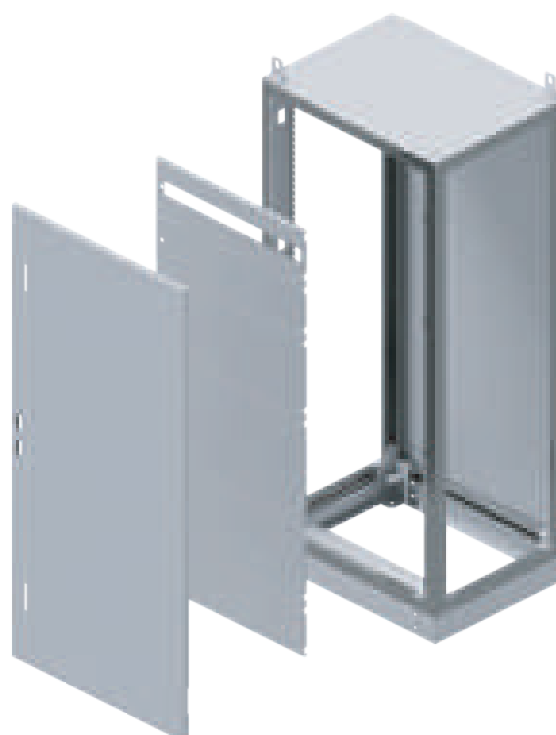
NILPA

TECHNICAL SPECIFICATIONS	
Type	Floor Standing
Design	Modular
Area of Use	Industrial
Protection Class	IP 55
Colors	RAL 7035
Paint	Electrostatic Powder
Depth	400-600 mm
Width	400-800 mm
Height	1600-2000 mm
Door	Single Door
Option	with Dead Front



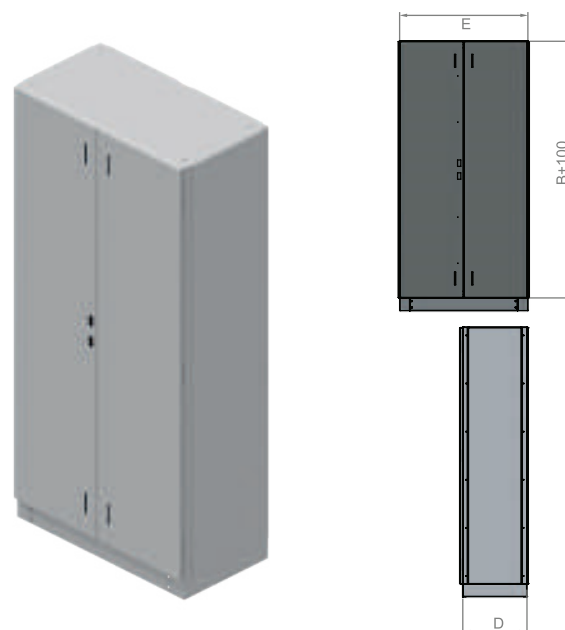
- The base is not included in the height measurements.
- When placing an order, the location of the openings on the doors for air filters, energy analyzers and alarms must be specified.
- With the modular hinged dead front system, it is possible to modify the dead front assembly.
- The design of the dead front can be modified, the dimensions of the dead front and internal cutouts must be specified when placing the order.
- The number of automats indicated in the table refers to one row.
- Front and rear doors are available. The opening direction of the front and rear doors can be changed.
- The polyurethane seal, Espagnolette lock and concealed hinges protect the doors from moisture and dust.
- Depending on preference, the doors can be fitted with glass.
- Thanks to the modular design, enclosures can be connected in rows.
- Please contact our representative for prices.

PRODUCT CODE	WIDTH x LENGTH x DEPTH (cm)	NUMBER OF AUTOMATS
NP.MD.PS.40*160*40	40 x 160 x 40	14
NP.MD.PS.50*160*40	50 x 160 x 40	19
NP.MD.PS.60*160*40	60 x 160 x 40	25
NP.MD.PS.40*160*50	40 x 160 x 50	14
NP.MD.PS.50*160*50	50 x 160 x 50	19
NP.MD.PS.60*160*50	60 x 160 x 50	25
NP.MD.PS.40*180*40	40 x 180 x 40	14
NP.MD.PS.50*180*40	50 x 180 x 40	19
NP.MD.PS.60*180*40	60 x 180 x 40	25
NP.MD.PS.40*180*50	40 x 180 x 50	14
NP.MD.PS.50*180*50	50 x 180 x 50	19
NP.MD.PS.60*180*50	60 x 180 x 50	25
NP.MD.PS.70*180*50	70 x 180 x 50	29
NP.MD.PS.50*200*40	50 x 200 x 40	19
NP.MD.PS.60*200*40	60 x 200 x 40	25
NP.MD.PS.70*200*40	70 x 200 x 40	29
NP.MD.PS.50*200*50	50 x 200 x 50	19
NP.MD.PS.60*200*50	60 x 200 x 50	25
NP.MD.PS.70*200*50	70 x 200 x 50	29
NP.MD.PS.80*200*50	80 x 200 x 50	35
NP.MD.PS.70*200*60	70 x 200 x 60	29
NP.MD.PS.80*200*60	80 x 200 x 60	35



DOUBLE-DOOR FLOOR STANDING MODULAR ENCLOSURE WITH MOUNTING PLATE

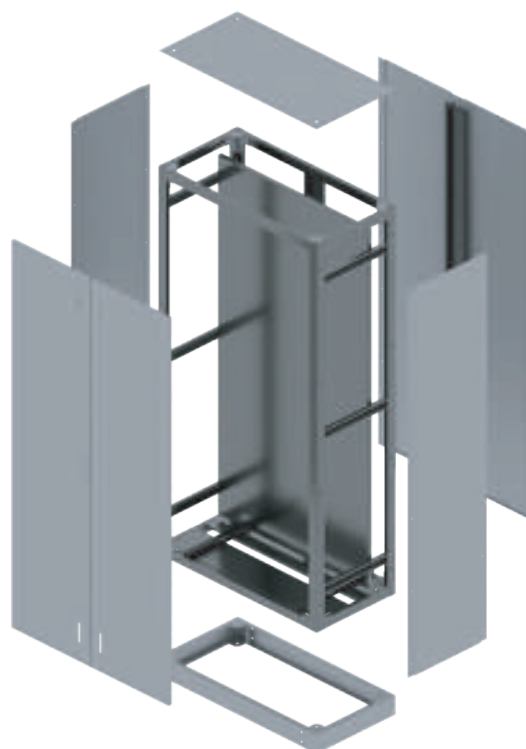
TECHNICAL SPECIFICATIONS	
Type	Floor Standing
Design	Modular
Area of Use	Industrial
Protection Class	IP 55
Colors	RAL 7035
Paint	Electrostatic Powder
Depth	400-500 mm
Width	1200 mm
Height	1600-2000 mm
Door	Double door
Option	with Mounting Plate



- The base is not included in the height measurements.
- The opening direction of the door can be changed.
- The door is installed with concealed hinges and an Espagnolette lock.
- The rear and side plates have a similar design.
- When placing an order, the location of the openings on the doors for air filters, energy analyzers and alarms must be specified.

- Depending on preference, doors can be fitted with glass.
- Thanks to the modular design, enclosures can be connected in rows.
- To ensure protection against moisture and dust, the doors have a polyurethane seal.
- Front and rear doors are available.
- Please contact our representative for prices.

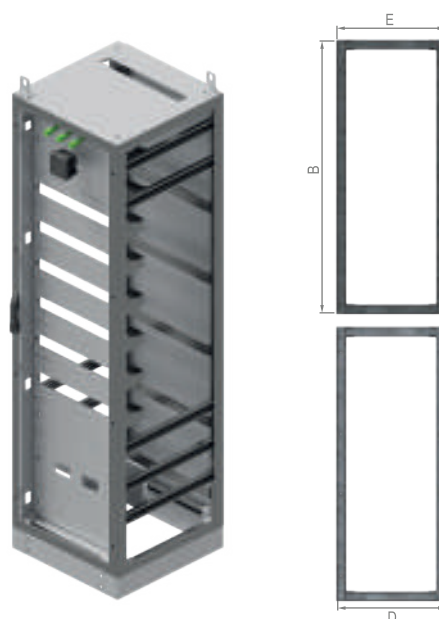
PRODUCT CODE	WIDTH x LENGTH x DEPTH (cm)	MOUNTING PLATE (mm)
NP.MD.TSÇ.120*160*40	120 x 160 x 40	1048 x 1350
NP.MD.TSÇ.120*180*40	120 x 180 x 40	1048 x 1550
NP.MD.TSÇ.120*200*40	120 x 200 x 40	1048 x 1850
NP.MD.TSÇ.120*160*50	120 x 160 x 50	1048 x 1350
NP.MD.TSÇ.120*180*50	120 x 180 x 50	1048 x 1550
NP.MD.TSÇ.120*200*50	120 x 200 x 50	1048 x 1850



MODULAR SYSTEM ENCLOSURE FRAME

NILPA

TECHNICAL SPECIFICATIONS	
Type	Floor standing
Design	Modular
Plate Thickness	1,5 mm
Type of material	Galvanized steel
Depth	400 - 600 mm
Width	400 - 800 mm
Height	1600 - 2000 mm



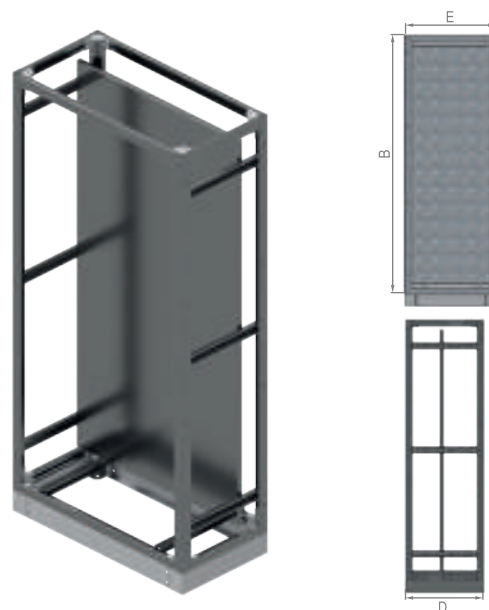
- The base is not included in the height measurements.
- Thanks to the fully modular, seamless design, frame can be modified.
- Please contact our representative for prices.

PRODUCT CODE	WIDTH x HEIGHT x DEPTH (cm)
NP.MD.K.40*160*40	40 x 160 x 40
NP.MD.K.50*160*40	50 x 160 x 40
NP.MD.K.60*160*40	60 x 160 x 40
NP.MD.K.40*160*50	40 x 160 x 50
NP.MD.K.50*160*50	50 x 160 x 50
NP.MD.K.60*160*50	60 x 160 x 50
NP.MD.K.40*180*40	40 x 180 x 40
NP.MD.K.50*180*40	50 x 180 x 40
NP.MD.K.60*180*40	60 x 180 x 40
NP.MD.K.40*180*50	40 x 180 x 50
NP.MD.K.50*180*50	50 x 180 x 50
NP.MD.K.60*180*50	60 x 180 x 50
NP.MD.K.70*180*50	70 x 180 x 50
NP.MD.K.50*200*40	50 x 200 x 40
NP.MD.K.60*200*40	60 x 200 x 40
NP.MD.K.70*200*40	70 x 200 x 40
NP.MD.K.50*200*50	50 x 200 x 50
NP.MD.K.60*200*50	60 x 200 x 50
NP.MD.K.70*200*50	70 x 200 x 50
NP.MD.K.80*200*50	80 x 200 x 50
NP.MD.K.70*200*60	70 x 200 x 60
NP.MD.K.80*200*60	80 x 200 x 60



FLOOR STANDING MODULAR ENCLOSURE FRAME WITH MOUNTING PLATE

TECHNICAL SPECIFICATIONS	
Type	Floor Standing
Design	Modular
Plate Thickness	1,5 mm
Type of material	Galvanized Steel
Depth	400 - 600 mm
Width	400 - 800 mm
Height	1600 - 2000 mm



- The base is not included in the height measurements.
- Thanks to the fully modular, seamless design, frame can be modified.
- Please contact our representative for prices.

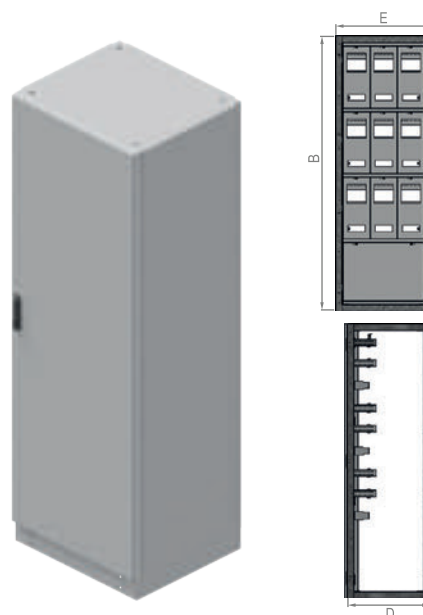
PRODUCT CODE	WIDTH x HEIGHT x DEPTH (cm)	MOUNTING PLATE (mm)
NP.MD.K.TS.40*160*40	40 x 160 x 40	348 x 1450
NP.MD.K.TS.50*160*40	50 x 160 x 40	448 x 1450
NP.MD.K.TS.60*160*40	60 x 160 x 40	548 x 1450
NP.MD.K.TS.40*160*50	40 x 160 x 50	348 x 1450
NP.MD.K.TS.50*160*50	50 x 160 x 50	448 x 1450
NP.MD.K.TS.60*160*50	60 x 160 x 50	548 x 1450
NP.MD.K.TS.40*180*40	40 x 180 x 40	348 x 1650
NP.MD.K.TS.50*180*40	50 x 180 x 40	448 x 1650
NP.MD.K.TS.60*180*40	60 x 180 x 40	548 x 1650
NP.MD.K.TS.40*180*50	40 x 180 x 50	348 x 1650
NP.MD.K.TS.50*180*50	50 x 180 x 50	448 x 1650
NP.MD.K.TS.60*180*50	60 x 180 x 50	548 x 1650
NP.MD.K.TS.70*180*50	70 x 180 x 50	648 x 1650
NP.MD.K.TS.50*200*40	50 x 200 x 40	448 x 1850
NP.MD.K.TS.60*200*40	60 x 200 x 40	548 x 1850
NP.MD.K.TS.70*200*40	70 x 200 x 40	648 x 1850
NP.MD.K.TS.50*200*50	50 x 200 x 50	448 x 1850
NP.MD.K.TS.60*200*50	60 x 200 x 50	548 x 1850
NP.MD.K.TS.70*200*50	70 x 200 x 50	648 x 1850
NP.MD.K.TS.80*200*50	80 x 200 x 50	748 x 1850
NP.MD.K.TS.70*200*60	70 x 200 x 60	648 x 1850
NP.MD.K.TS.80*200*60	80 x 200 x 60	748 x 1850



FLOOR STANDING MODULAR METER BOX

NILPA

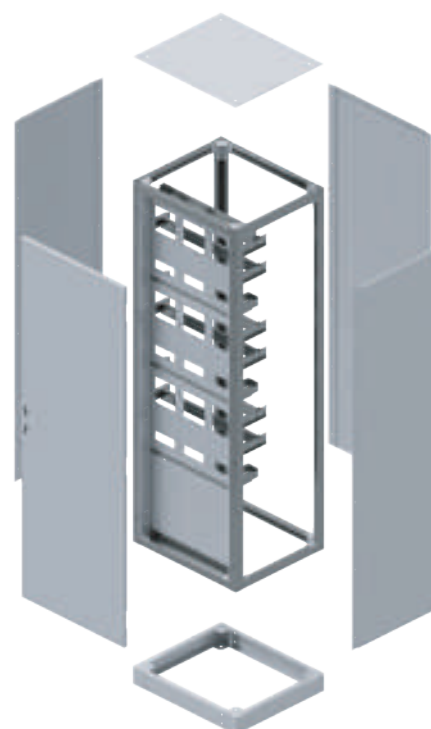
TECHNICAL SPECIFICATIONS	
Type	Floor Standing
Design	Modular
Area of Use	Industrial
Protection Class	IP 55
Colors	RAL 7035
Paint	Electrostatic Powder
Depth	400-500 mm
Width	400-900 mm
Height	1600-2000 mm
Door	Single-Double door
Option	with Dead Front



- The opening direction of the door can be changed.
- The door is installed with concealed hinges and an Espagnolette lock.
- The rear and side plates have a similar design.
- When placing an order, the location of the openings on the doors for air filters, energy analyzers and alarms must be specified.
- Depending on preference, doors can be fitted with glass.

- The meter compartments can be modified on request.
- Thanks to the modular design, enclosures can be connected in rows.
- To ensure protection against moisture and dust, the doors have a polyurethane seal.
- Front and rear doors are available.
- Please contact our representative for prices.

PRODUCT CODE	WIDTH x HEIGHT x DEPTH (cm)	NUMBER OF METERS
NP.MD.SP.40*160*40	40 x 160 x 40	5
NP.MD.SP.50*160*40	50 x 160 x 40	5
NP.MD.SP.60*160*40	60 x 160 x 40	7
NP.MD.SP.40*160*50	40 x 160 x 50	5
NP.MD.SP.50*160*50	50 x 160 x 50	5
NP.MD.SP.60*160*60	60 x 160 x 60	7
NP.MD.SP.40*180*40	40 x 180 x 40	5
NP.MD.SP.50*180*50	50 x 180 x 50	5
NP.MD.SP.60*180*60	60 x 180 x 60	7
NP.MD.SP.40*180*40	40 x 180 x 40	5
NP.MD.SP.50*180*50	50 x 180 x 50	5
NP.MD.SP.60*180*60	60 x 180 x 60	7
NP.MD.SP.40*200*40	40 x 200 x 40	5
NP.MD.SP.50*200*50	50 x 200 x 50	5
NP.MD.SP.60*200*60	60 x 200 x 60	7
NP.MD.SP.40*200*40	40 x 200 x 40	5
NP.MD.SP.50*200*50	50 x 200 x 50	5
NP.MD.SP.60*200*60	60 x 200 x 60	7
NP.MD.SP.90*200*50	90 x 200 x 50	14



FLOOR STANDING OUTDOOR TYPE ENCLOSURES

Floor Standing Outdoor Type Enclosure with Mounting Plate

TECHNICAL SPECIFICATIONS

Type	Semi-Modular
Design	Outdoor Type
Area of Use	Industrial
Protection Class	IP 65
Colors	RAL 7035
Paint	Electrostatic Powder
Depth	400-500 mm
Width	600-1000 mm
Height	1500-2000 mm
Door	Single-Double door
Option	with Mounting Plate

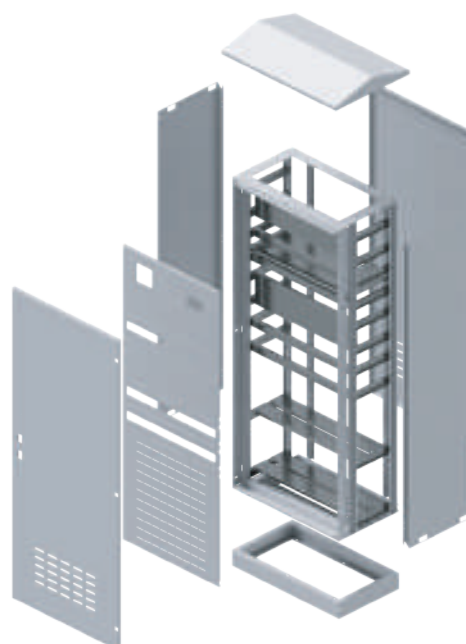


- The base is not included in the height measurements.
- When placing an order, the location of the openings on the doors for air filters, energy analyzers and alarms must be specified.
- Depending on preference, doors can be fitted with glass.
- The door is installed with concealed hinges and an Espagnolette lock.
- The opening direction of the door can be changed.
- To ensure protection against moisture and dust, the doors have a polyurethane seal.
- Asymmetrical roof is used to divert rainwater away from the enclosure.
- Please contact our representative for prices.

Floor Standing Outdoor Type Enclosure with Dead Front

TECHNICAL SPECIFICATIONS

Type	Semi-Modular
Design	Outdoor Type
Area of Use	Industrial
Protection Class	IP 65
Colors	RAL 7035
Paint	Electrostatic Powder
Depth	400-500 mm
Width	600-900 mm
Height	1500-2000 mm
Door	Single-Double door
Option	with Dead Front



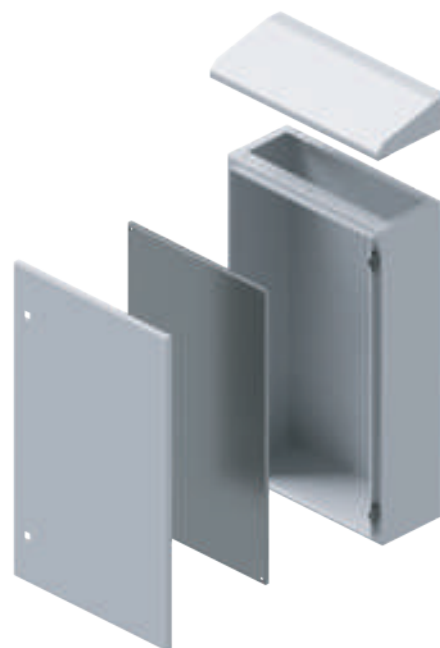
WALL MOUNTED OUTDOOR TYPE ENCLOSURES

NILPA

Wall Mounted Outdoor Type Enclosure with Mounting Plate

TECHNICAL SPECIFICATIONS

Type	Welded
Design	Outdoor Type
Area of Use	Industrial
Protection Class	IP 65
Colors	RAL 7035
Paint	Electrostatic Powder
Depth	250-300 mm
Width	400-900 mm
Height	600-1200 mm
Door	Single-Double door
Option	with Mounting Plate

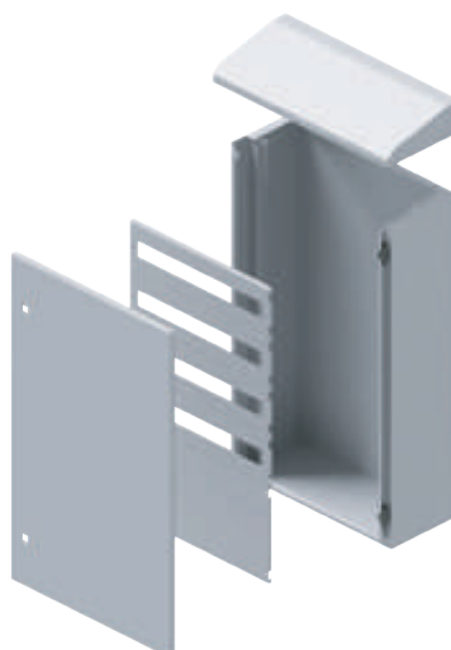


- When placing an order, the location of the openings on the doors for air filters, energy analyzers and alarms must be specified.
- Depending on preference, doors can be fitted with glass.
- To ensure protection against moisture and dust, the doors have a polyurethane seal.
- The door is installed with concealed hinges and an Espagnolette lock.
- The opening direction of the door can be changed.
- Asymmetrical roof is used to divert rainwater away from the enclosure.
- For enclosures with dead front, the dimensions of the dead front and internal cutouts must be specified when placing the order.
- Please contact our representative for prices.

Wall Mounted Outdoor Type Enclosure with Dead Front

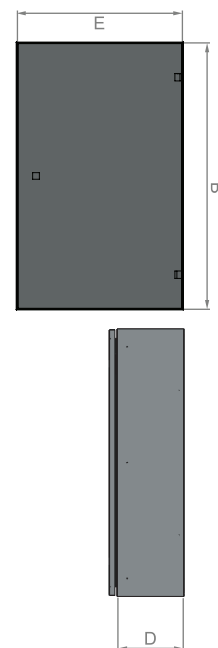
TECHNICAL SPECIFICATIONS

Type	Welded
Design	Outdoor Type
Area of Use	Industrial
Protection Class	IP 65
Colors	RAL 7035
Paint	Electrostatic Powder
Depth	200 mm
Width	400-900 mm
Height	600-1200 mm
Door	Single-Double door
Option	with Dead Front



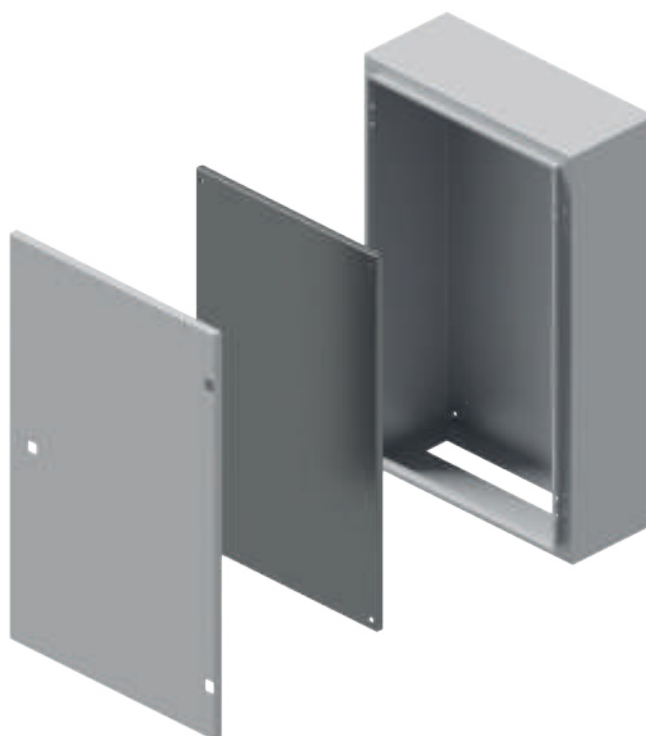
SURFACE MOUNTED ENCLOSURE WITH MOUNTING PLATE

TECHNICAL SPECIFICATIONS	
Type	Welded
Design	Surface Mounted
Area of Use	Industrial
Protection Class	IP 55
Colors	RAL 7035
Paint	Electrostatic Powder
Depth	150-300 mm
Width	300-800 mm
Height	400-1000 mm
Door	Single-Double door
Option	with Mounting Plate



- When placing an order, the location of the openings on the doors for air filters, energy analyzers and alarms must be specified.
- The opening direction of the door can be changed.
- Wall brackets are available to facilitate the mounting of enclosures to the wall.

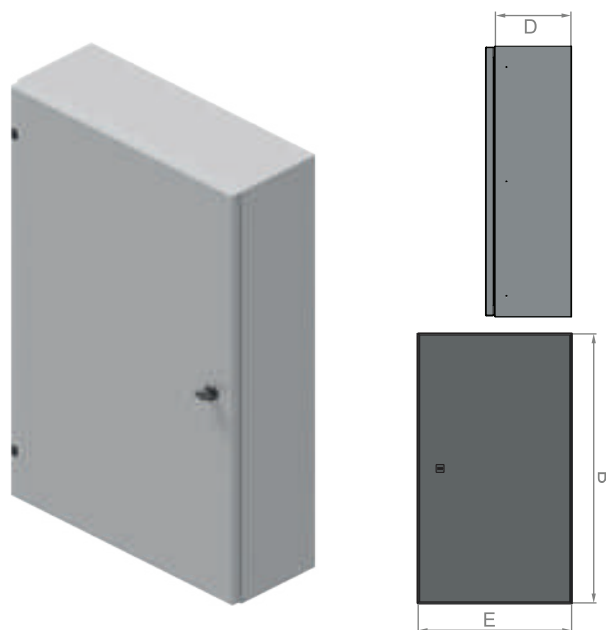
- To ensure protection against moisture and dust, the doors have a polyurethane seal.
- Depending on preference, the doors can be fitted with glass.
- Please contact our representative for prices.



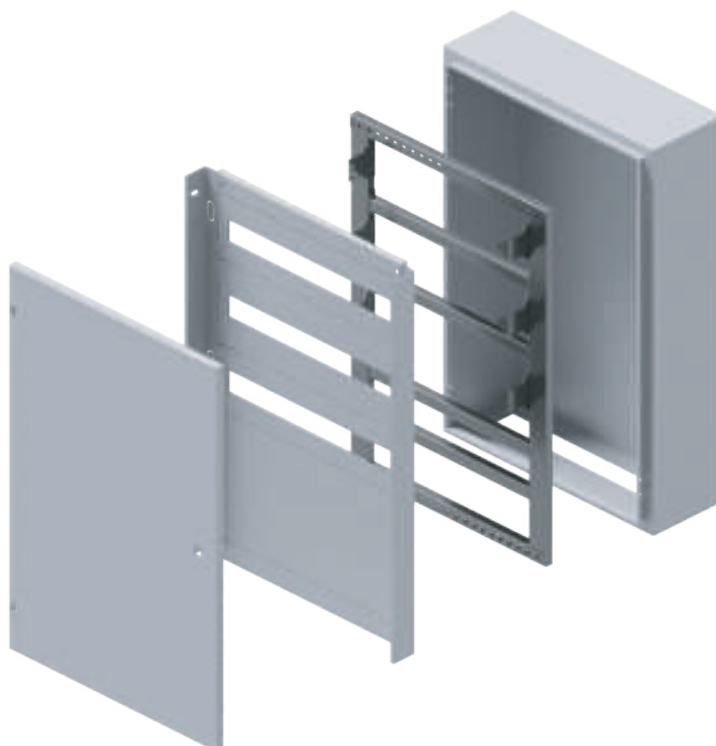
SURFACE MOUNTED ENCLOSURE WITH DEAD FRONT

NILPA

TECHNICAL SPECIFICATIONS	
Type	Modular
Design	Surface Mounted
Area of Use	Industrial
Protection Class	IP 55
Colors	RAL 7035
Paint	Electrostatic Powder
Depth	150-250 mm
Width	400-800 mm
Height	500-1000 mm
Door	Single-Double door
Option	with Dead Front

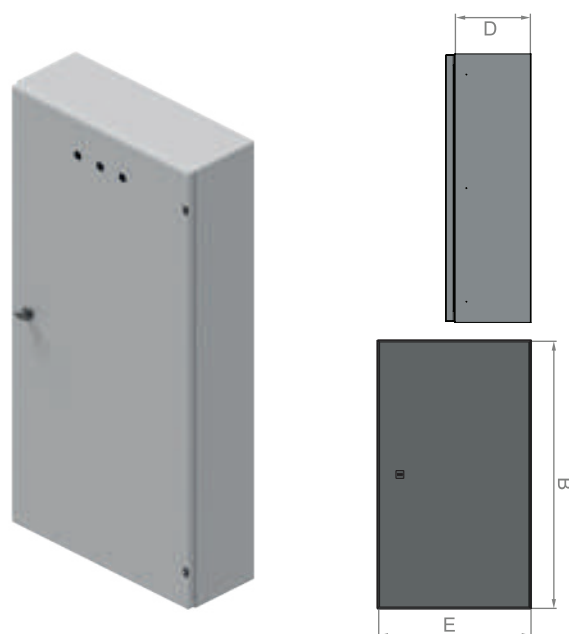


- The design of the dead front can be modified on request.
- For enclosures with dead front, the dimensions of the dead front and internal cutouts must be specified when placing the order.
- Door is equipped with concealed hinges and a butterfly lock.
- Depending on preference, the doors can be fitted with glass.
- The opening direction of the door can be changed.
- Wall brackets are available to facilitate the mounting of enclosures to the wall.
- To ensure protection against moisture and dust, the doors have a polyurethane seal.
- When placing an order, the location of the openings on the doors for air filters, energy analyzers and alarms must be specified.
- Please contact our representative for prices.

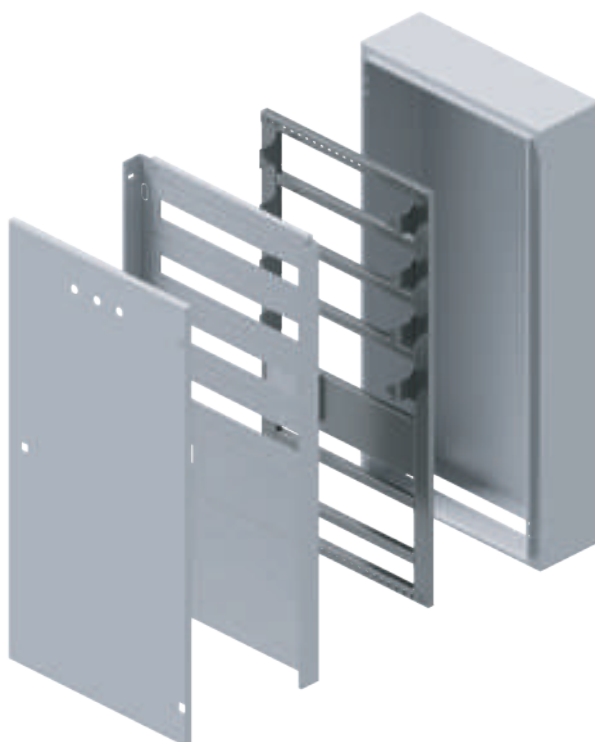


SURFACE MOUNTED SEMI-MODULAR ENCLOSURE WITH DEAD FRONT

TECHNICAL SPECIFICATIONS	
Type	Welded
Design	Surface Mounted
Area of Use	Industrial
Protection Class	IP 55
Colors	RAL 7035
Paint	Electrostatic Powder
Depth	150-400 mm
Width	400-800 mm
Height	500-1000 mm
Door	Single-Double door
Option	with Dead Front



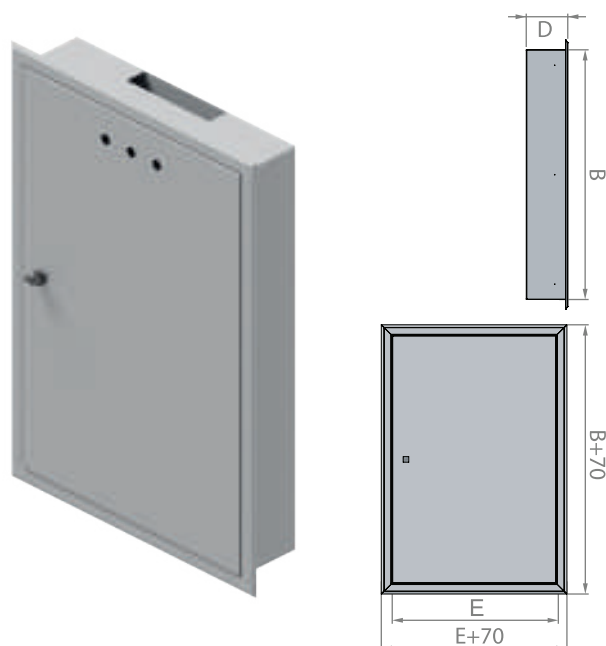
- The design of the dead front can be modified on request, please specify the dimensions of the dead front and internal cut-outs when placing the order.
- When placing an order, the location of the openings on the doors for air filters, energy analyzers and alarms must be specified.
- Door is equipped with concealed hinges and a butterfly lock.
- Wall brackets are available to facilitate the mounting of enclosures to the wall.
- Depending on preference, the doors can be equipped with glass and the direction of opening can be changed.
- To ensure protection against moisture and dust, the doors have a polyurethane seal.
- Please contact our representative for prices.



RECESSED ENCLOSURE WITH MOUNTING PLATE

NiLPA

TECHNICAL SPECIFICATIONS	
Type	Welded
Design	Recessed
Area of Use	Industrial
Protection Class	IP 55
Colors	RAL 7035
Paint	Electrostatic Powder
Depth	100-175 mm
Width	300-800 mm
Height	400-1000 mm
Door	Single-Double door
Option	with Mounting Plate

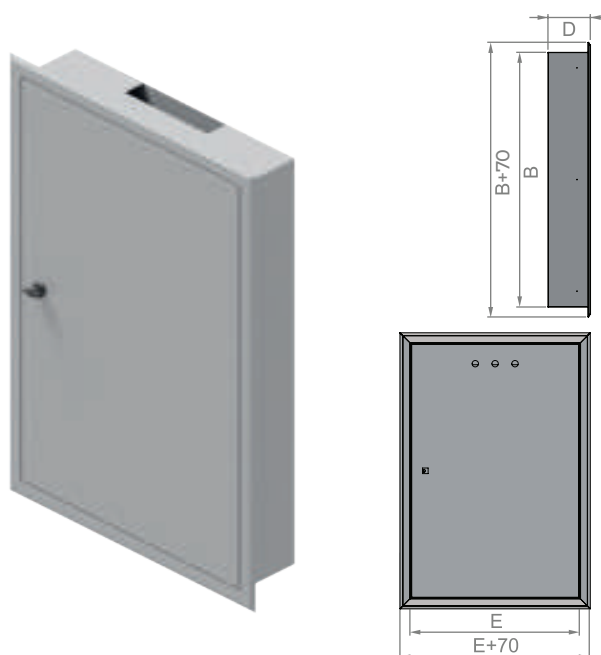


- When placing an order, the location of the openings on the doors for air filters, energy analyzers and alarms must be specified.
- Depending on preference, the doors can be equipped with glass.
- The opening direction of the door can be changed.
- To ensure protection against moisture and dust, the doors have a polyurethane seal.
- Door is equipped with concealed hinges and a butterfly lock.
- Please contact our representative for prices.

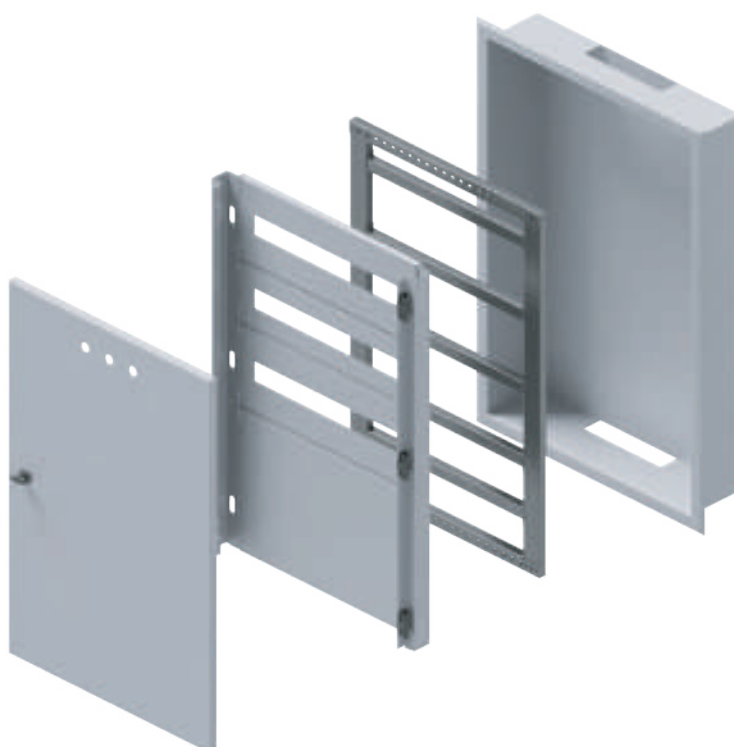


RECESSED ENCLOSURE WITH DEAD FRONT

TECHNICAL SPECIFICATIONS	
Type	Welded
Design	Recessed
Area of Use	Industrial
Protection Class	IP 55
Colors	RAL 7035
Paint	Electrostatic Powder
Depth	100-175 mm
Width	400-800 mm
Height	500-1000 mm
Door	Single-Double door
Option	with Dead Front



- The design of the dead front can be modified on request.
- Door is equipped with concealed hinges and a butterfly lock.
- When placing an order, the location of the openings on the doors for air filters, energy analyzers and alarms must be specified.
- The opening direction of the door can be changed.
- For enclosures with dead front, the dimensions of the dead front and internal cutouts must be specified when placing the order.
- To ensure protection against moisture and dust, the doors have a polyurethane seal.
- Please contact our representative for prices.



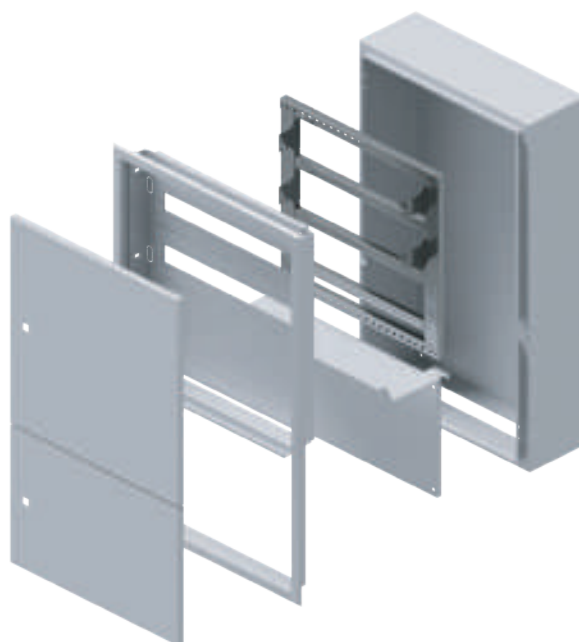
WALL TYPE DISTRIBUTION + LOW VOLTAGE BOARDS

NILPA

Recessed Distribution + Low Voltage Board

TECHNICAL SPECIFICATIONS

Type	Welded
Design	Recessed
Area of Use	Industrial
Protection Class	IP 55
Colors	RAL 7035
Paint	Electrostatic Powder
Depth	100-200 mm
Width	600 mm
Height	800-1000 mm
Door	Top-Bottom door
Option	upper part-distribution lower part-low current



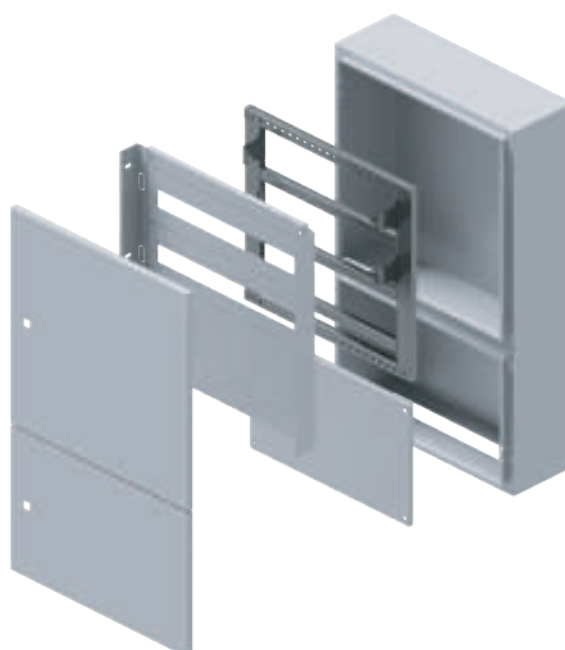
- When placing an order, the location of the openings on the doors for air filters, energy analyzers and alarms must be specified.
- To ensure protection against moisture and dust, the doors have a polyurethane seal.

- The opening direction of the door can be changed.
- Depending on preference, the doors can be equipped with glass.
- Door is equipped with concealed hinges and a butterfly lock.
- Please contact our representative for prices.

Surface Mounted Distribution + Low Voltage Board

TECHNICAL SPECIFICATIONS

Type	Welded
Design	Surface Mounted
Area of Use	Industrial
Protection Class	IP 55
Colors	RAL 7035
Paint	Electrostatic Powder
Depth	100-200 mm
Width	600 mm
Height	800-1000 mm
Door	Top-Bottom door
Option	upper part-distribution lower part-low current



DESK CONSOLE

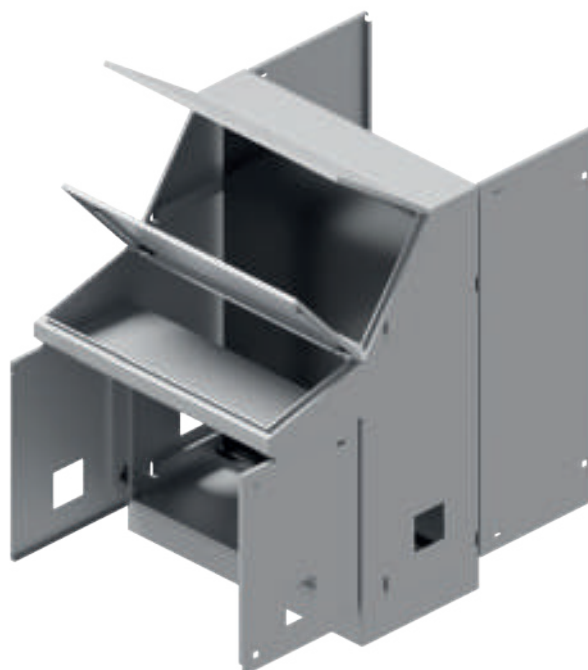
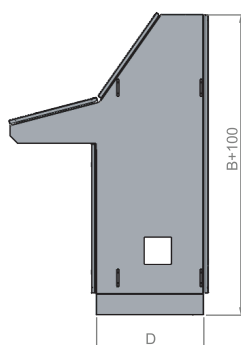
TECHNICAL SPECIFICATIONS	
Type	Welded
Design	Surface Mounted
Area of Use	Industrial
Protection Class	IP 55
Colors	RAL 7035
Paint	Electrostatic Powder
Depth	500 mm
Width	600-1200 mm
Height	1400 mm
Door	Single-Double door
Option	with Mounting Plate



- When placing an order, the location of the openings on the doors for air filters, energy analyzers and alarms must be specified.
- Depending on preference, the doors can be equipped with glass.

- Possible to install a double mounting plate.
- If necessary, you can order a second mounting plate separately.
- Please contact our representative for prices.

PRODUCT CODE	WIDTH x HEIGHT x DEPTH (cm)
NP.PI.60*140*50	60 x 140 x 50
NP.PI.80*140*50	80 x 140 x 50
NP.PI.100*140*50	100 x 140 x 50
NP.PI.120*140*50	120 x 140 x 50



PULT-TYPE CONSOLE / KIOSK ENCLOSURE

NILPA

Pult-Type Console	
TECHNICAL SPECIFICATIONS	
Type	Welded
Design	Surface Mounted
Area of Use	Industrial
Protection Class	IP 55
Colors	RAL 7035
Paint	Electrostatic Powder
Depth	500 mm
Width	400-1200 mm
Height	1200 mm
Door	Single-Double door
Option	with Mounting Plate



For Pult Type Consoles,

- When placing an order, the location of the openings on the doors for air filters, energy analyzers and alarms must be specified.
- Depending on preference, the doors can be equipped with glass.
- Possible to install a double mounting plate.
- If necessary, you can order a second mounting plate separately.

For Kiosk Enclosures,

- The keyboard and monitor screen can be modified to suit your preferences.
- It can be produced with castors and can be fixed depending on your request.
- Please contact our representative for prices.

Kiosk Enclosure	
TECHNICAL SPECIFICATIONS	
Type	Welded
Design	Floor Standing
Area of Use	Industrial
Protection Class	IP 55
Colors	RAL 7035
Paint	Electrostatic Powder
Depth	150-200 mm
Width	600 mm
Height	1400-1500 mm
Door	Back door
Option	with Mounting Plate



ELEVATOR CONTROL BOARDS / CONSTRUCTION ENCLOSURES

Elevator Control Boards	
TECHNICAL SPECIFICATIONS	
Type	Welded (spot welding)
Design	Distribution Board
Area of Use	Industrial
Protection Class	IP 55
Colors	RAL 7035
Paint	Electrostatic Powder
Depth	120 mm
Width	350 mm
Height	450 mm
Door	Single door
Option	with Dead Front



- Depending on your preference, construction enclosures can be manufactured with or without socket.
- Please contact our representative for prices.

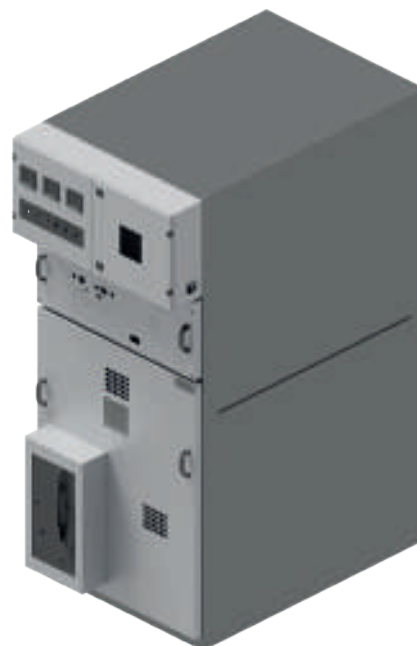
Construction Enclosures	
TECHNICAL SPECIFICATIONS	
Type	Welded
Design	Distribution Board
Area of Use	Industrial
Protection Class	IP 55
Colors	RAL 7035
Paint	Electrostatic Powder
Depth	200-400 mm
Width	400-900 mm
Height	800-1200 mm
Door	Double door
Option	with Mounting Plate



MEDIUM-VOLTAGE ENCLOSURE / SUBSTATION KIOSKS

NILPA

Medium-Voltage Enclosure	
TECHNICAL SPECIFICATIONS	
Type	Floor Standing
Design	Modular
Area of Use	Industrial
Protection Class	IP 55
Colors	RAL 7035
Paint	Electrostatic Powder
Height	1800 mm



- Please contact our representative for prices.

Substation Kiosks	
TECHNICAL SPECIFICATIONS	
Type	Welded
Design	Modular
Area of Use	Industrial
Protection Class	IP 55
Colors	RAL 7035
Paint	Electrostatic Powder
Door	Double Door



STAINLESS-STEEL ENCLOSURES

Stainless-Steel Enclosure with Mounting Plate

TECHNICAL SPECIFICATIONS

Type	Welded
Design	Surface Mounted
Area of Use	Industrial
Protection Class	IP 55
Material	304 / 316 stainless steel
Door	Single/Double door
Option	with Mounting Plate



- When placing an order, the location of the openings on the doors for air filters, energy analyzers and alarms must be specified.
- The opening direction of the door can be changed.
- Door is equipped with concealed hinges and a butterfly lock.

- Please specify the stainless-steel grade when placing your order.
- Please contact our representative for prices.

Semi-Modular Stainless Steel Enclosure with Mounting Plate

TECHNICAL SPECIFICATIONS

Type	Semi-Modular
Design	Floor Standing
Area of Use	Industrial
Protection Class	IP 55
Material	304 Stainless Steel
Door	Single/Double door
Option	with Mounting Plate



ABS ENCLOSURES

NiLPA

ABS Enclosure with Opaque Door and Dead Front

TECHNICAL SPECIFICATIONS

Design	Surface Mounted
Area of Use	Industrial
Protection Class	IP 65
Material	ABS
Door	Single Door
Colors	RAL 7035
Thermal resistance	-40°C / +80°C



ABS Enclosure with Clear Door and Dead Front

TECHNICAL SPECIFICATIONS

Design	Surface Mounted
Area of Use	Industrial
Protection Class	IP 65
Material	ABS
Door	Single Door
Colors	RAL 7035
Thermal resistance	-40°C / +80°C



ABS Enclosure with Opaque Door

TECHNICAL SPECIFICATIONS

Design	Surface Mounted
Area of Use	Industrial
Protection Class	IP 65
Material	ABS
Door	Single Door
Colors	RAL 7035
Thermal resistance	-40°C / +80°C



ABS Enclosure with Clear Door

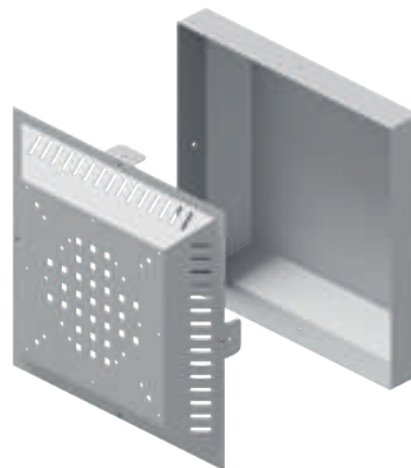
TECHNICAL SPECIFICATIONS

Design	Surface Mounted
Area of Use	Industrial
Protection Class	IP 65
Material	ABS
Door	Single Door
Colors	RAL 7035
Thermal resistance	-40°C / +80°C



ROOF-TYPE VENTILATION FAN / VENTILATION FILTERS / DATA POCKETS

ROOF-TYPE VENTILATION FAN	
TECHNICAL SPECIFICATIONS	
Design	Semi-Modular
Area of Use	Industrial
Protection Class	IP 32
Colors	RAL 7035
Paint	Electrostatic Powder
Plate Thickness	1,5 mm
Material	DKP
PRODUCT CODE	PRODUCT NAME
FAN	Empty Fan Module
FAN.300	300m ³ FAN
FAN.600	600m ³ FAN
FAN.900	900m ³ FAN



VENTILATION FILTERS	
TECHNICAL SPECIFICATIONS	
Protection Class	IP 54
Colors	RAL 7035
Material	Plastic
PRODUCT CODE	PRODUCT NAME
MEN.105*105	105 x 105 VENT. FILTER
MEN.150*150	150 x 150 VENT. FILTER
MEN.250*250	250 x 250 VENT. FILTER
MEN.325*325	325 x 325 VENT. FILTER



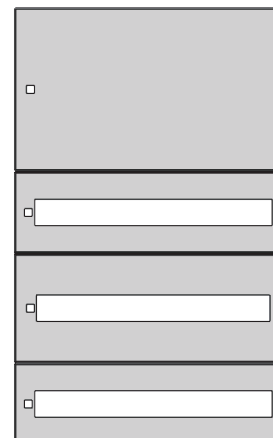
DATA POCKETS	
TECHNICAL SPECIFICATIONS	
Type	Wall-mounted
Area of Use	Industrial
Protection Class	IP 55
Colors	Ral 7035
Paint	Electrostatic Powder
Plate Thickness	1 mm
Size	Optional
PRODUCT CODE	SIZE
PC.1	175 x 200 x 25
PC.2	225 x 230 x 25



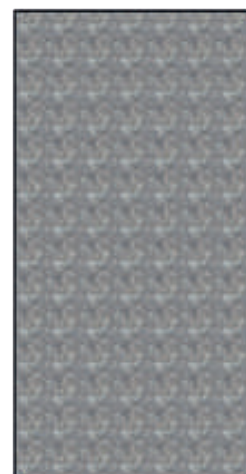
DEAD FRONT / MOUNTING PLATE

NILPA

DEAD FRONT	
TECHNICAL SPECIFICATIONS	
Type	Floor standing/Wall-mounted
Area of Use	Industrial
Protection Class	IP 55
Colors	Ral 7035
Paint	Electrostatic Powder
Plate Thickness	1 mm
Size	Optional



MOUNTING PLATE	
TECHNICAL SPECIFICATIONS	
Type	Floor standing/Wall-mounted
Design	Modular
Area of Use	Industrial
Protection Class	IP 55
Plate Thickness	1,5 mm
Material	Galvanized steel
Size	Optional



- Please contact our representative for prices.

RACK CABINET / VOLTAGE REGULATOR ENCLOSURE

Rack Cabinet	
TECHNICAL SPECIFICATIONS	
Type	Floor Standing/Wall-mounted
Design	Modular
Area of Use	Industrial
Protection Class	IP 55
Paint	Electrostatic Powder
Material	Dkp - Galvanized Steel
Size	Optional



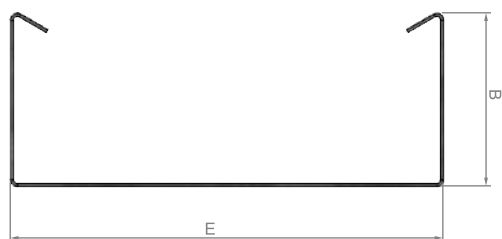
- It is designed as a modular system compatible with ready-to-assemble system.
- The opening direction of the door can be changed.
- Depending on the customer's needs, the product is available for both indoor and outdoor use.

- We provide assistance in selecting the right fan module to protect the product from overheating.
- Electrostatic Powder Coating is used.
- There is a cable pass-through at the bottom of the housing.
- Please contact our representative for prices.

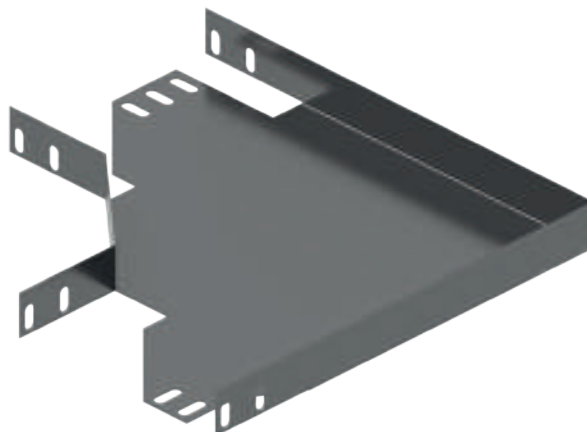
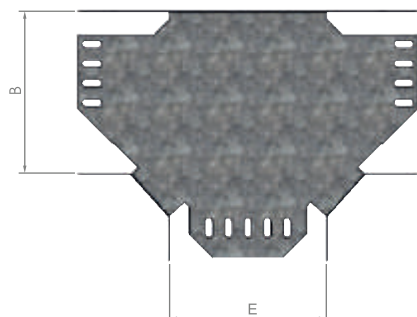
Voltage Regulator Enclosure	
TECHNICAL SPECIFICATIONS	
Type	Floor Standing/Wall-mounted
Design	Modular
Area of Use	Industrial
Protection Class	IP 55
Paint	Electrostatic Powder
Material	Dkp - Galvanized Steel
Size	Optional



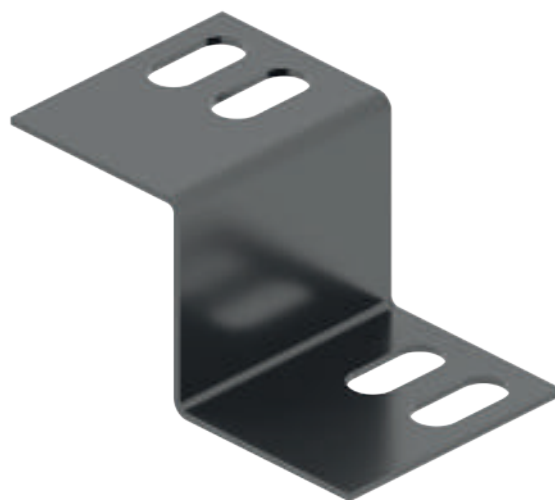
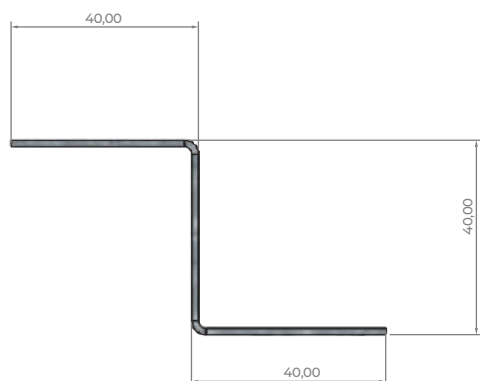
Heavy-duty Cable Trays



Tray Bends



Tray Reducer



OUR CERTIFICATIONS



TÜRK STANDARDLARI ENSTİTÜSÜ
TÜRK STANDARDLARINA UYGUNLUK BELGESİ
TURKISH STANDARDS INSTITUTION
CERTIFICATE OF CONFORMITY TO TURKISH STANDARDS

BELGE NUMARASI
REFERENCE NUMBER OF LICENCE
BELGENİN İLK VERİŞİ TARİHİ
DATE OF FIRST ISSUE OF LICENCE
BELGENİN SON GEÇERLİLİK TARİHİ
LICENCE VALID UNTIL
BELGE SAHİBİ KURULUŞUN ADI
NAME OF THE LICENCE HOLDER
BELGE SAHİBİ KURULUŞUN ADRESİ
ADDRESS OF THE LICENCE HOLDER
ÜRETİM YERİ ADI
NAME OF THE MANUFACTURING PLACE
ÜRETİM YERİ ADRESİ
ADDRESS OF THE MANUFACTURING PLACE
İPTAL EDİLEN BELGE NUMARASI (Varsa)
INDICATION OF SUPERSEDED LICENCE (if any)
TESCİLLİ TİCARİ MARKASI
REGISTERED TRADE MARK
İLGİLİ TÜRK STANDARDI
RELATED TURKISH STANDARD
BELGE KAPSAMI
SCOPE OF LICENCE

0411380-TSE-01/02
07.05.2025
07.05.2028
NİLPA PANO SANAYİ TİCARET ANONİM ŞİRKETİ
SAĞLIK MAH. SOĞUKSU CAD. INTEGRAL ENDÜSTRİ NO:1 A
ERGENE TEKRİDAĞ/TÜRKİYE
NİLPA PANO SANAYİ TİCARET ANONİM ŞİRKETİ
SAĞLIK MAHALLESİ SOĞUKSU CADDESİNO:1A (ERGENE/TEKRİDAĞ
TEKRİDAĞ / TÜRKİYE
0411380-TSE-01/01
Nİlpe elektrik pano sistemleri
TS EN IEC 62208 / 08.11.2023



BOŞ MAHAZALAR
MODEL: HARİCİ DİKLİ TIP ADP PANO
METAL ZEMİNE SABİTLENEN İP54 BİNA DIŞI IK 10 KORUMA DERECELİ
BOYUTLAR: GENİŞLİK/YÜKSEKLİK/DERİNLİK, 300mm/1200mm/300mm (dahil) den, 900mm/2050mm/800mm
(dahile) kadar
MODEL: HARİCİ DİKLİ TIP TAVALI MCC PANO
METAL ZEMİNE SABİTLENEN İP54 BİNA DIŞI IK 10 KORUMA DERECELİ
BOYUTLAR: GENİŞLİK/YÜKSEKLİK/DERİNLİK, 300mm/1200mm/300mm (dahil) den, 900mm/2050mm/800mm
(dahile) kadar
MODEL: HARİCİ DİKLİ TIP TAVALI MCC PANO
METAL ZEMİNE SABİTLENEN İP54 BİNA DIŞI IK 10 KORUMA DERECELİ
BOYUTLAR: GENİŞLİK/YÜKSEKLİK/DERİNLİK, 300mm/1200mm/300mm (dahil) den, 900mm/2050mm/800mm
(dahile) kadar

e-imza ile signed
30.10.2025
Belgelendirme Merkezi Başkanı Adına
AKDOĞAN BULUT
İSTANBUL BELGELENDİRME MÜDÜRÜ V.

"Bu belge, belgelendirilen Ürünler, Ürünlerin Üretiminde Kullanılan Malzemilerin belgelendirilme kapsamına girmesiyle geçerlidir.
"Bu belge, bu belgelendirme belgesinin, Ürünlerin Üretiminde Kullanılan Malzemilerin belgelendirilme kapsamına girmesiyle geçerlidir.
TSE STANDARTLARI BELGELENDİRME MÜDÜRLÜĞÜ Adres: Davutpaşa Yolu Kavşağına Yakın ÇAYIROVAĞAZI - Tuzla - 30520/027 Faks: 067234048
TSE BELGELENDİRME MERKEZİ BAŞKANLIĞI Adres: Nispetiye Cad. No:113/0100 Sarıyer/İSTANBUL - Telefon: 0 212 416 54 51 / 416 54 52 / Faks: 0 212 416 06 17 E-posta: belgelendirme@tse.gov.tr - web: www.tse.gov.tr

<https://www.belgelendirme.gov.tr/Belgelendirme.aspx?g=ysk4848> Ürünlerin belgelendirilme bilgileri ve güncellenen belgeye ulaşmak için



1 / 3



TÜRK STANDARDLARI ENSTİTÜSÜ
TÜRK STANDARDLARINA UYGUNLUK BELGESİ
TURKISH STANDARDS INSTITUTION
CERTIFICATE OF CONFORMITY TO TURKISH STANDARDS

BELGE NUMARASI
REFERENCE NUMBER OF LICENCE
BELGENİN İLK VERİŞİ TARİHİ
DATE OF FIRST ISSUE OF LICENCE
BELGENİN SON GEÇERLİLİK TARİHİ
LICENCE VALID UNTIL
BELGE SAHİBİ KURULUŞUN ADI
NAME OF THE LICENCE HOLDER
BELGE SAHİBİ KURULUŞUN ADRESİ
ADDRESS OF THE LICENCE HOLDER
ÜRETİM YERİ ADI
NAME OF THE MANUFACTURING PLACE
ÜRETİM YERİ ADRESİ
ADDRESS OF THE MANUFACTURING PLACE
İPTAL EDİLEN BELGE NUMARASI (Varsa)
INDICATION OF SUPERSEDED LICENCE (if any)
TESCİLLİ TİCARİ MARKASI
REGISTERED TRADE MARK
İLGİLİ TÜRK STANDARDI
RELATED TURKISH STANDARD
BELGE KAPSAMI
SCOPE OF LICENCE

0411380-TSE-01/02(nolu belge devam) : NİLPA PANO SANAYİ TİCARET ANONİM ŞİRKETİ
İLGİLİ TÜRK STANDARDI(RELATED TURKISH STANDARD) TS EN IEC 62208 / 08.11.2023
MODEL: HARİCİ DİKLİ TIP SİYAH PANO
METAL ZEMİNE SABİTLENEN İP54 BİNA DIŞI IK 10 KORUMA DERECELİ
BOYUTLAR: GENİŞLİK/YÜKSEKLİK/DERİNLİK, 300mm/1200mm/300mm (dahil) den, 900mm/2050mm/800mm
(dahile) kadar
MODEL: DAHLİ DİKLİ TIP ADP PANO
METAL ZEMİNE SABİTLENEN İP54 BİNA DIŞI IK 10 KORUMA DERECELİ
BOYUTLAR: GENİŞLİK/YÜKSEKLİK/DERİNLİK, 300mm/1200mm/300mm (dahil) den, 900mm/2050mm/800mm
(dahile) kadar
MODEL: DAHLİ DİKLİ TIP TAVALI MCC PANO
METAL ZEMİNE SABİTLENEN İP54 BİNA DIŞI IK 10 KORUMA DERECELİ
BOYUTLAR: GENİŞLİK/YÜKSEKLİK/DERİNLİK, 300mm/1200mm/300mm (dahil) den, 900mm/2050mm/800mm
(dahile) kadar
MODEL: DAHLİ DİKLİ TIP SİYAH PANO
METAL ZEMİNE SABİTLENEN İP54 BİNA DIŞI IK 10 KORUMA DERECELİ
BOYUTLAR: GENİŞLİK/YÜKSEKLİK/DERİNLİK, 300mm/1200mm/300mm (dahil) den, 900mm/2050mm/800mm
(dahile) kadar
MODEL: PERDE SACLİ TABLO SİVA ALTI
METAL DUVARA SABİTLENEN İP54 BİNA İÇİ IK 10 KORUMA DERECELİ
BOYUTLAR: GENİŞLİK/YÜKSEKLİK/DERİNLİK, 150mm/200mm/100mm (dahil) den, 650mm/1050mm/160mm
(dahile) kadar
MODEL: PERDE SACLİ TABLO SİVA ÜSTÜ
METAL DUVARA SABİTLENEN İP54 BİNA İÇİ IK 10 KORUMA DERECELİ
BOYUTLAR: GENİŞLİK/YÜKSEKLİK/DERİNLİK, 150mm/200mm/100mm (dahil) den, 650mm/1050mm/160mm
(dahile) kadar
MODEL: TAVALI MCC TABLO SİVA ALTI
METAL DUVARA SABİTLENEN İP54 BİNA İÇİ IK 10 KORUMA DERECELİ
BOYUTLAR: GENİŞLİK/YÜKSEKLİK/DERİNLİK, 150mm/200mm/100mm (dahil) den, 650mm/1050mm/200mm
(dahile) kadar
MODEL: TAVALI MCC TABLO SİVA ÜSTÜ
METAL DUVARA SABİTLENEN İP54 BİNA İÇİ IK 10 KORUMA DERECELİ
BOYUTLAR: GENİŞLİK/YÜKSEKLİK/DERİNLİK, 150mm/200mm/100mm (dahil) den, 650mm/1050mm/200mm
(dahile) kadar
MODEL: PİYANO PANO



BOŞ MAHAZALAR
MODEL: HARİCİ DİKLİ TIP SİYAH PANO
METAL ZEMİNE SABİTLENEN İP54 BİNA DIŞI IK 10 KORUMA DERECELİ
BOYUTLAR: GENİŞLİK/YÜKSEKLİK/DERİNLİK, 300mm/1200mm/300mm (dahil) den, 900mm/2050mm/800mm
(dahile) kadar
MODEL: DAHLİ DİKLİ TIP ADP PANO
METAL ZEMİNE SABİTLENEN İP54 BİNA DIŞI IK 10 KORUMA DERECELİ
BOYUTLAR: GENİŞLİK/YÜKSEKLİK/DERİNLİK, 300mm/1200mm/300mm (dahil) den, 900mm/2050mm/800mm
(dahile) kadar
MODEL: DAHLİ DİKLİ TIP TAVALI MCC PANO
METAL ZEMİNE SABİTLENEN İP54 BİNA DIŞI IK 10 KORUMA DERECELİ
BOYUTLAR: GENİŞLİK/YÜKSEKLİK/DERİNLİK, 300mm/1200mm/300mm (dahil) den, 900mm/2050mm/800mm
(dahile) kadar
MODEL: DAHLİ DİKLİ TIP SİYAH PANO
METAL ZEMİNE SABİTLENEN İP54 BİNA DIŞI IK 10 KORUMA DERECELİ
BOYUTLAR: GENİŞLİK/YÜKSEKLİK/DERİNLİK, 300mm/1200mm/300mm (dahil) den, 900mm/2050mm/800mm
(dahile) kadar
MODEL: PERDE SACLİ TABLO SİVA ALTI
METAL DUVARA SABİTLENEN İP54 BİNA İÇİ IK 10 KORUMA DERECELİ
BOYUTLAR: GENİŞLİK/YÜKSEKLİK/DERİNLİK, 150mm/200mm/100mm (dahil) den, 650mm/1050mm/160mm
(dahile) kadar
MODEL: PERDE SACLİ TABLO SİVA ÜSTÜ
METAL DUVARA SABİTLENEN İP54 BİNA İÇİ IK 10 KORUMA DERECELİ
BOYUTLAR: GENİŞLİK/YÜKSEKLİK/DERİNLİK, 150mm/200mm/100mm (dahil) den, 650mm/1050mm/160mm
(dahile) kadar
MODEL: TAVALI MCC TABLO SİVA ALTI
METAL DUVARA SABİTLENEN İP54 BİNA İÇİ IK 10 KORUMA DERECELİ
BOYUTLAR: GENİŞLİK/YÜKSEKLİK/DERİNLİK, 150mm/200mm/100mm (dahil) den, 650mm/1050mm/200mm
(dahile) kadar
MODEL: TAVALI MCC TABLO SİVA ÜSTÜ
METAL DUVARA SABİTLENEN İP54 BİNA İÇİ IK 10 KORUMA DERECELİ
BOYUTLAR: GENİŞLİK/YÜKSEKLİK/DERİNLİK, 150mm/200mm/100mm (dahil) den, 650mm/1050mm/200mm
(dahile) kadar
MODEL: PİYANO PANO


e-imza ile signed
30.10.2025
Belgelendirme Merkezi Başkanı Adına
AKDOĞAN BULUT
İSTANBUL BELGELENDİRME MÜDÜRÜ V.

"Bu belge, belgelendirilen Ürünler, Ürünlerin Üretiminde Kullanılan Malzemilerin belgelendirilme kapsamına girmesiyle geçerlidir.
"Bu belge, bu belgelendirme belgesinin, Ürünlerin Üretiminde Kullanılan Malzemilerin belgelendirilme kapsamına girmesiyle geçerlidir.
TSE STANDARTLARI BELGELENDİRME MÜDÜRLÜĞÜ Adres: Davutpaşa Yolu Kavşağına Yakın ÇAYIROVAĞAZI - Tuzla - 30520/027 Faks: 067234048
TSE BELGELENDİRME MERKEZİ BAŞKANLIĞI Adres: Nispetiye Cad. No:113/0100 Sarıyer/İSTANBUL - Telefon: 0 212 416 54 51 / 416 54 52 / Faks: 0 212 416 06 17 E-posta: belgelendirme@tse.gov.tr - web: www.tse.gov.tr

<https://www.belgelendirme.gov.tr/Belgelendirme.aspx?g=ysk4848> Ürünlerin belgelendirilme bilgileri ve güncellenen belgeye ulaşmak için




2 / 3



TÜRK STANDARDLARI ENSTİTÜSÜ
TÜRK STANDARDLARINA UYGUNLUK BELGESİ
TURKISH STANDARDS INSTITUTION
CERTIFICATE OF CONFORMITY TO TURKISH STANDARDS

BELGE NUMARASI
REFERENCE NUMBER OF LICENCE
BELGENİN İLK VERİŞİ TARİHİ
DATE OF FIRST ISSUE OF LICENCE
BELGENİN SON GEÇERLİLİK TARİHİ
LICENCE VALID UNTIL
BELGE SAHİBİ KURULUŞUN ADI
NAME OF THE LICENCE HOLDER
BELGE SAHİBİ KURULUŞUN ADRESİ
ADDRESS OF THE LICENCE HOLDER
ÜRETİM YERİ ADI
NAME OF THE MANUFACTURING PLACE
ÜRETİM YERİ ADRESİ
ADDRESS OF THE MANUFACTURING PLACE
İPTAL EDİLEN BELGE NUMARASI (Varsa)
INDICATION OF SUPERSEDED LICENCE (if any)
TESCİLLİ TİCARİ MARKASI
REGISTERED TRADE MARK
İLGİLİ TÜRK STANDARDI
RELATED TURKISH STANDARD
BELGE KAPSAMI
SCOPE OF LICENCE

0411380-TSE-01/02(nolu belge devam) : NİLPA PANO SANAYİ TİCARET ANONİM ŞİRKETİ
İLGİLİ TÜRK STANDARDI(RELATED TURKISH STANDARD) TS EN IEC 62208 / 08.11.2023
METAL DUVARA SABİTLENEN İP2X BİNA DIŞI IK10 KORUMA DERECELİ
BOYUTLAR: GENİŞLİK/YÜKSEKLİK/DERİNLİK, 500mm/500mm/100mm (dahil) den, 1000mm/1000mm/300mm
(dahile) kadar
MODEL: HARİCİ PERDE SACLİ TABLO
METAL DUVARA SABİTLENEN İP66 BİNA DIŞI IK10 KORUMA DERECELİ
BOYUTLAR: GENİŞLİK/YÜKSEKLİK/DERİNLİK, 150mm/200mm/100mm (dahil) den, 500mm/650mm/200mm
(dahile) kadar
MODEL: HARİCİ TABLO TAVALI MCC TABLO
METAL DUVARA SABİTLENEN İP66 BİNA DIŞI IK10 KORUMA DERECELİ
BOYUTLAR: GENİŞLİK/YÜKSEKLİK/DERİNLİK, 150mm/200mm/100mm (dahil) den, 500mm/650mm/200mm
(dahile) kadar
Not: Bu belge elektrik donanımı bulunan Aşağı Gerilim Arızaları ve Kontrol Ünsesi standardı olan TS EN IEC 61439-2 Standardı belgesi yerine kullanılmaz.




BOŞ MAHAZALAR
METAL DUVARA SABİTLENEN İP2X BİNA DIŞI IK10 KORUMA DERECELİ
BOYUTLAR: GENİŞLİK/YÜKSEKLİK/DERİNLİK, 500mm/500mm/100mm (dahil) den, 1000mm/1000mm/300mm
(dahile) kadar
MODEL: HARİCİ PERDE SACLİ TABLO
METAL DUVARA SABİTLENEN İP66 BİNA DIŞI IK10 KORUMA DERECELİ
BOYUTLAR: GENİŞLİK/YÜKSEKLİK/DERİNLİK, 150mm/200mm/100mm (dahil) den, 500mm/650mm/200mm
(dahile) kadar
MODEL: HARİCİ TABLO TAVALI MCC TABLO
METAL DUVARA SABİTLENEN İP66 BİNA DIŞI IK10 KORUMA DERECELİ
BOYUTLAR: GENİŞLİK/YÜKSEKLİK/DERİNLİK, 150mm/200mm/100mm (dahil) den, 500mm/650mm/200mm
(dahile) kadar
Not: Bu belge elektrik donanımı bulunan Aşağı Gerilim Arızaları ve Kontrol Ünsesi standardı olan TS EN IEC 61439-2 Standardı belgesi yerine kullanılmaz.

e-imza ile signed
30.10.2025
Belgelendirme Merkezi Başkanı Adına
AKDOĞAN BULUT
İSTANBUL BELGELENDİRME MÜDÜRÜ V.

"Bu belge, belgelendirilen Ürünler, Ürünlerin Üretiminde Kullanılan Malzemilerin belgelendirilme kapsamına girmesiyle geçerlidir.
"Bu belge, bu belgelendirme belgesinin, Ürünlerin Üretiminde Kullanılan Malzemilerin belgelendirilme kapsamına girmesiyle geçerlidir.
TSE STANDARTLARI BELGELENDİRME MÜDÜRLÜĞÜ Adres: Davutpaşa Yolu Kavşağına Yakın ÇAYIROVAĞAZI - Tuzla - 30520/027 Faks: 067234048
TSE BELGELENDİRME MERKEZİ BAŞKANLIĞI Adres: Nispetiye Cad. No:113/0100 Sarıyer/İSTANBUL - Telefon: 0 212 416 54 51 / 416 54 52 / Faks: 0 212 416 06 17 E-posta: belgelendirme@tse.gov.tr - web: www.tse.gov.tr

<https://www.belgelendirme.gov.tr/Belgelendirme.aspx?g=ysk4848> Ürünlerin belgelendirilme bilgileri ve güncellenen belgeye ulaşmak için



3 / 3



Lvt
TEST LABORATUVARI LTD. ŞTİ.

TEST SERTİFİKASI / TEST CERTIFICATE

No : C-23-2610-R0
Müşteri : NİLAS ÇELİK SANAYİ TİCARET ANONİM ŞİRKETİ
İmalatçı : NİLAS ÇELİK SANAYİ TİCARET ANONİM ŞİRKETİ
Ürün Tanımı : BOŞ MAHAZALAR
Teknik Veri : IP4X, IP66, IK10
Test Standardı : TS EN IEC 62208-2023
Konu : TEST SONUCU (OLUMLU)
Uygulanan Test(ler) : İlgilene, Statik Yükleme, Kaldırma Düzeni, Mekanik Çarpma, Metal Ek Parçaların Eksemlerinin Doğrulaması, Çek Mekanik Deneylere Karşı Koruma Derecesi, Yalıtım Malzemelerinin Doğrulaması, Sınıf I Malzemenin Açıkta Kalan Bükme Parçaları ile Korozyon Deneyi Arasında Etkin Topraklı Sürdürülebilirlik, Mor Ötesi İlgilene Karşı Dayanıklılık Deneyi (UV), Korozyon Karşı Dayanıklılık, Isıl Güç Kaybı Yetenegi
Test Rapor Numarası : 23-2610-R0-N0-1
Sertifika Tarihi : 09.01.2023
Deney Sorumlusu : Cem AKDOĞAN
Bölüm Müdürü : Ata GÜVİ ADILANI
Belgelendirme Merkezi Başkanı Adına
AKDOĞAN BULUT
İSTANBUL BELGELENDİRME MÜDÜRÜ V.

TEST SERTİFİKASI / TEST CERTIFICATE

No : C-23-2610-R0
Müşteri : NİLAS ÇELİK SANAYİ TİCARET ANONİM ŞİRKETİ
İmalatçı : NİLAS ÇELİK SANAYİ TİCARET ANONİM ŞİRKETİ
Ürün Tanımı : BOŞ MAHAZALAR
Teknik Veri : IP4X, IP66, IK10
Test Standardı : TS EN IEC 62208-2023
Konu : TEST SONUCU (OLUMLU)
Uygulanan Test(ler) : İlgilene, Statik Yükleme, Kaldırma Düzeni, Mekanik Çarpma, Metal Ek Parçaların Eksemlerinin Doğrulaması, Çek Mekanik Deneylere Karşı Koruma Derecesi, Yalıtım Malzemelerinin Doğrulaması, Sınıf I Malzemenin Açıkta Kalan Bükme Parçaları ile Korozyon Deneyi Arasında Etkin Topraklı Sürdürülebilirlik, Mor Ötesi İlgilene Karşı Dayanıklılık Deneyi (UV), Korozyon Karşı Dayanıklılık, Isıl Güç Kaybı Yetenegi
Test Rapor Numarası : 23-2610-R0-N0-1
Sertifika Tarihi : 09.01.2023
Deney Sorumlusu : Cem AKDOĞAN
Bölüm Müdürü : Ata GÜVİ ADILANI
Belgelendirme Merkezi Başkanı Adına
AKDOĞAN BULUT
İSTANBUL BELGELENDİRME MÜDÜRÜ V.



BOŞ MAHAZALAR
METAL DUVARA SABİTLENEN İP2X BİNA DIŞI IK10 KORUMA DERECELİ
BOYUTLAR: GENİŞLİK/YÜKSEKLİK/DERİNLİK, 500mm/500mm/100mm (dahil) den, 1000mm/1000mm/300mm
(dahile) kadar
MODEL: HARİCİ PERDE SACLİ TABLO
METAL DUVARA SABİTLENEN İP66 BİNA DIŞI IK10 KORUMA DERECELİ
BOYUTLAR: GENİŞLİK/YÜKSEKLİK/DERİNLİK, 150mm/200mm/100mm (dahil) den, 500mm/650mm/200mm
(dahile) kadar
MODEL: HARİCİ TABLO TAVALI MCC TABLO
METAL DUVARA SABİTLENEN İP66 BİNA DIŞI IK10 KORUMA DERECELİ
BOYUTLAR: GENİŞLİK/YÜKSEKLİK/DERİNLİK, 150mm/200mm/100mm (dahil) den, 500mm/650mm/200mm
(dahile) kadar
Not: Bu belge elektrik donanımı bulunan Aşağı Gerilim Arızaları ve Kontrol Ünsesi standardı olan TS EN IEC 61439-2 Standardı belgesi yerine kullanılmaz.

e-imza ile signed
30.10.2025
Belgelendirme Merkezi Başkanı Adına
AKDOĞAN BULUT
İSTANBUL BELGELENDİRME MÜDÜRÜ V.

"Bu belge, belgelendirilen Ürünler, Ürünlerin Üretiminde Kullanılan Malzemilerin belgelendirilme kapsamına girmesiyle geçerlidir.
"Bu belge, bu belgelendirme belgesinin, Ürünlerin Üretiminde Kullanılan Malzemilerin belgelendirilme kapsamına girmesiyle geçerlidir.
TSE STANDARTLARI BELGELENDİRME MÜDÜRLÜĞÜ Adres: Davutpaşa Yolu Kavşağına Yakın ÇAYIROVAĞAZI - Tuzla - 30520/027 Faks: 067234048
TSE BELGELENDİRME MERKEZİ BAŞKANLIĞI Adres: Nispetiye Cad. No:113/0100 Sarıyer/İSTANBUL - Telefon: 0 212 416 54 51 / 416 54 52 / Faks: 0 212 416 06 17 E-posta: belgelendirme@tse.gov.tr - web: www.tse.gov.tr

<https://www.belgelendirme.gov.tr/Belgelendirme.aspx?g=ysk4848> Ürünlerin belgelendirilme bilgileri ve güncellenen belgeye ulaşmak için



3 / 3

OUR CERTIFICATIONS

UYGUNLUK BEYANI ONAY SERTİFİKASI
DECLARATION OF CONFORMITY APPROVAL CERTIFICATE

Belirli Gerilim Sınırları İçin Tasarlanan
Elektrikli Ekipman ile İlgili Yönetmelik - 2014/35/AB
The Low Voltage Directive - 2014/35/EU

Belge Numarası
Certificate Number : CE 24-0005-02R2

Kuruluşun Adı
Name of Company : NİLPA PANO SANAYİ TİCARET ANONİM ŞİRKETİ

Kuruluşun Adresi
Address of Company : SAĞLIK MAH. BOĞUKSULU CAD. INTEGRAL ENDÜSTRİ BLOK NO:1A ERGENE / TEKİRDAĞ

Üretim Yeri Adı
Name of Manufacture : NİLPA PANO SANAYİ TİCARET ANONİM ŞİRKETİ

Üretim Yeri Adresi
Address of Manufacture : SAĞLIK MAH. BOĞUKSULU CAD. INTEGRAL ENDÜSTRİ BLOK NO:1A ERGENE / TEKİRDAĞ

Ürün Tanımı
Product Description : AG ANAHTARLAMA DÜZENİ VE KONTROL DÜZENİ PANOLARI

Ticari Marka
Trade Mark : LOW-VOLTAGE SWITCHGEAR AND CONTROLGEAR ASSEMBLIES

Model
Model : NİLPA ELEKTRİK PANO SİSTEMLERİ

İlgili Yönetmelik(ler)
Relevant Directive(s) : 2014/35/AB BELİRLİ GERİLİM SINIRLARI İÇİN TASARLANAN ELEKTRİK EKİPMAN İLE İLGİLİ YÖNETMELİK 2014/35/EU THE LOW VOLTAGE DIRECTIVE

İlgili Standart(ler)
Relevant Standard(s) : TS EN IEC 61439-1:2001/AC:2022/AC:2024 IEC 61439-1:2020/EN:2023 TS EN IEC 61439-2:2021 IEC 61439-2:2020

Rapor Numarası
Report Number : 23-0611-R04N-1

İlk Belgelendirme Tarihi
First Certification Date : 11.01.2024

Yeni Yayın Tarihi
New Issue Date : 14.10.2025

Geçerlilik Tarihi
Validity Date : 13.10.2026

QR kodu kullanarak belge geçerliliğini kontrol edebilirsiniz.
(You can check the validity of the certificate by using QR code.)

14/10/2025
Ata GÜRÜL ARSLANLI
Genel Müdür

LVT TEST LABORATUVARLARI LTD. ŞTİ. Saray Modern Kuvvetler San. Sit. 4. Cad. No:9 Saray-Kızılay/ANKARA-TM-0312 813 11 25 - 36 - www.lvt.com.tr - info@lvt.com.tr

Lvt **CE**

UYGUNLUK BEYANI ONAY SERTİFİKASI
DECLARATION OF CONFORMITY APPROVAL CERTIFICATE

Belirli Gerilim Sınırları İçin Tasarlanan
Elektrikli Ekipman ile İlgili Yönetmelik - 2014/35/AB
The Low Voltage Directive - 2014/35/EU

Belge Numarası
Certificate Number : CE 24-0005-01R2

Kuruluşun Adı
Name of Company : NİLPA PANO SANAYİ TİCARET ANONİM ŞİRKETİ

Kuruluşun Adresi
Address of Company : SAĞLIK MAH. BOĞUKSULU CAD. INTEGRAL ENDÜSTRİ BLOK NO:1A ERGENE / TEKİRDAĞ

Üretim Yeri Adı
Name of Manufacture : NİLPA PANO SANAYİ TİCARET ANONİM ŞİRKETİ

Üretim Yeri Adresi
Address of Manufacture : SAĞLIK MAH. BOĞUKSULU CAD. INTEGRAL ENDÜSTRİ BLOK NO:1A ERGENE / TEKİRDAĞ

Ürün Tanımı
Product Description : Dİ-İLİ ve HARIÇ TİP BOŞ MAHAFAZALAR

Ticari Marka
Trade Mark : INTERNAL AND EXTERNAL TYPE EMPTY ENCLOSURES

Model
Model : NİLPA ELEKTRİK PANO SİSTEMLERİ

İlgili Yönetmelik(ler)
Relevant Directive(s) : 2014/35/AB BELİRLİ GERİLİM SINIRLARI İÇİN TASARLANAN ELEKTRİK EKİPMAN İLE İLGİLİ YÖNETMELİK 2014/35/EU THE LOW VOLTAGE DIRECTIVE

İlgili Standart(ler)
Relevant Standard(s) : TS EN IEC 62208:2023

Rapor Numarası
Report Number : 23-2810-R04N-1

İlk Belgelendirme Tarihi
First Certification Date : 11.01.2024

Yeni Yayın Tarihi
New Issue Date : 14.10.2025

Geçerlilik Tarihi
Validity Date : 13.10.2026

QR kodu kullanarak belge geçerliliğini kontrol edebilirsiniz.
(You can check the validity of the certificate by using QR code.)

14/10/2025
Ata GÜRÜL ARSLANLI
Genel Müdür

LVT TEST LABORATUVARLARI LTD. ŞTİ. Saray Modern Kuvvetler San. Sit. 4. Cad. No:9 Saray-Kızılay/ANKARA-TM-0312 813 11 25 - 36 - www.lvt.com.tr - info@lvt.com.tr

Lvt **CE**

KIOSCERT CERTIFICATE

Bu Sertifika / This Certificate

NİLPA PANO SANAYİ TİCARET ANONİM ŞİRKETİ

Firmasının / Ofisinin Adresi
Address of the Company : Sağlık Mah. Soğuksulu Cad. Integral Endüstri No:1 A Ergene / Tekirdağ / Türkiye

Adreslerinde bulunan tesisleri KIOSCERT Belgelendirme tarafından denetlenmiş ve Kalite Yönetim Sistemini
The facilities at the addresses have been audited by KIOSCERT and Quality Management System

ISO 9001:2015

Sertifikasyon şartları kapsamında uygulanmakta olduğu görülmüştür.
It has been observed that the conditions are applied with in the following scope

Belgelendirme Kapsamı / Certification Scope

ELEKTRİK ANA DAĞITIM PANOLARI, BOŞ MAHAFAZALAR, TALİ PANOLARI MONTAJ, İMALATI VE SATIŞI
INSTALLATION OF ELECTRICAL MAIN DISTRIBUTION PANELS, EMPTY ENCLOSURES SECONDARY PANELS, MANUFACTURE AND SALE

Teknik Alan / Technical Area : IAF Koşuliyatı Code: 19

Sertifika Numarası : QMS-25-0402-NIL
Certificate Number : QMS-25-0402-NIL

Sertifika İlk Yayın Tarihi : 04.02.2025
Certificate First Issue Date : 04.02.2025

Sertifika Yeniden Yayın Tarihi : 04.02.2025
Certificate Renewal Date : 04.02.2025

Sertifika Geçerlilik Tarihi : 03.02.2026
Certificate Validity Date : 03.02.2026

Sertifika Revizyon No ve Tarihi : 01 / 22.10.2025
Certificate Revision Number and Date : 01 / 22.10.2025

Belgelendirme Periyodu Bitiş Tarihi : 03.02.2026
Certification Period and Date : 03.02.2026

KIOSCERT

KIOSCERT CERTIFICATION SERVICES LIMITED
24 Shrodsdale London, England N11 1BL
Phone: +44 20 8588 1165
Web: www.kioscert.co.uk E-mail: info@kioscert.co.uk
Company Registered in England and Wales with Company Number 14289013

TEST SERTİFİKASI
TEST CERTIFICATE

No : C-24-510-R0

Müşteri : NİLAS ÇELİK SANAYİ TİCARET ANONİM ŞİRKETİ

İmalatçı : NİLAS ÇELİK SANAYİ TİCARET ANONİM ŞİRKETİ

Numune Tanımı : ALÇAK GERİLİM ANAHTARLAMA VE KONTROL DÜZENİ

Marka : NİLPA ELEKTRİK PANO SİSTEMLERİ

Teknik Veriler : 60 KA / 300 ms

Test Standardı : IEC TR 61841:2014

Konu : TEST SONUCU (OLUMLU)

Uygulanan Test(ler) : İç Ark Deneyi

Test Rapor Numarası : 24-510-R0-NI-1

Sertifika Tarihi : 28.05.2025

Deney Sorumlusu : ÇETKİ DOĞAN

Bölüm Müdürü : Ata GÜRÜL ARSLANLI

QR kodu kullanarak belge geçerliliğini kontrol edebilirsiniz.
(You can check the validity of the certificate by using QR code.)

181.88 / Rev02 / 0924

Lvt

ANKARA İLİNE HAYATİYE KÜLTÜR ÖZEL (İHAŞ),
Yenişehir Mahallesi Bulvarı, Saray OSM Mah. No:24
Kuşunbey/ANKARA / Ankara 06060

+90 312 853 13 25
+90 312 853 13 26
www.lvt.com.tr
info@lvt.com.tr

ÜRÜN BELGESİ / PRODUCT CERTIFICATE

Belge Numarası 261-1-62208/R2

Kuruluşun Adı / Firma Adı NILPA PANO SANAYİ TİCARET A.Ş.

Kuruluşun Adresi SAĞLIK MAH. SOĞUKSU CAD. INTEGRAL ENDÜSTRİ NO:1A ERGENİ/TEKİRDAĞ

Kuruluşun Üretim Yeri Adı NILPA PANO SANAYİ TİCARET A.Ş.

Kuruluşun Üretim Yeri Adresi SAĞLIK MAH. SOĞUKSU CAD. INTEGRAL ENDÜSTRİ NO:1A ERGENİ/TEKİRDAĞ

Tescilli Ticari Marka NILPA ELEKTRİK PANO SİSTEMLERİ

İlgili Standart TS EN IEC 62208-2023 - Bay Mahfazalar - Akık Gerilim Anahatırına ve Kontrol Sistemine İliş - Genel Kurallar
IEC 62208-2023 - Enrgy enclosures for low-voltage switchgear and controlgear assemblies - General requirements

İlk Belgelendirme Tarihi 20.05.2024

Yeni Yayın Tarihi 14.10.2025

Belgenin Son Geçerlilik Tarihi 13.10.2028

Belge Kapsamı

HARİCİ DİKİLİ TİP ADP PANO

- Metal / Zeminle Sabitlenen / Bina Dış / IP54 / IK 10
- Numune Boyutları (h x w x d): 2050 mm x 800 mm x 800 mm'e kadar
- İki Güç Kaybı: 1000W (2050mm x 800mm x 800mm için)
- Panonun Sac Kalınlığı (Metal) (mm): LULUSOYLAR / Karkas Sac 1,5 mm Galvanizli /ç Tavkiyeler 1,5 mm, Galvanizli On Kapak 1,5 mm, DKP Yan Arka Kapaklar 1 mm DKP/Perde Sacları 1 mm DKP/Çelik 1mm DKP
- Kilitlenme Sistemi Marka - Model: ATOS Adet Isıyapıcı Kilit (1 Adet)
- Boya Çözeltimi: AKZO NOBEL / Elektrostatik Polyester Toz Boya / RAL 7035 - 70x120 Miron (Çip Çaplı Polyester)
- Panonun Soğutma Tipi: Doğal
- Mahfazaya Montaj Şekli: Koyunak
- Çavata Çözeltimi: NORM / Galvanizli - Çelik
- MP10 Çavata B8
- MP15 Çavata B8
- MP12 Çavata B8
- Montaj: ATOS / Galvanizli Çelik (3 Adet)

(Belge Kapsamının Dışında Sakımlı Sayılmadık)

QR Kodu

Karekodlu kullanılarak belge geçerliliği kontrol edilebilir.

14.10 / 2025
Ata GÜNGÖR, BAĞLI
Genel Müdür

UTTEST LABORATUVARLARI LTD. ŞTİ. - www.uttest.com.tr - info@uttest.com.tr

Belge geçerliliği periyodu 3 yıl olup belgenin geçerliliği firmamız UTTEST ailesi belgelendirme şartlarına uyumuna ve yabın en az bir kez yapılacak güncelleme devamlılığıyla belgenin geçerliliği devamlılığına bağlıdır. TÜRKAK (Ulusal Akademi Akademi) Forumu (IAF) Karşılıklı Tanınma Anlaşması (MLA) ile belgelendirilmiştir.

The validity period is 3 years and validity of the document depends on the success of surveillance audit to be held at least once a year and compliance of UT product certification provisions of the company. TÜRKAK has signed International Accreditation Forum (IAF) and Mutual Recognition Arrangement (MLA).

Lvt

ÜRÜN BELGESİ / PRODUCT CERTIFICATE

Belge Kapsamı NILPA PANO SANAYİ TİCARET A.Ş.
(261-1-62208/R2 numaralı belge devamı)

HARİCİ DİKİLİ TİP TAVALI MCD PANO

- Metal / Zeminle Sabitlenen / Bina Dış / IP54 / IK 10
- Numune Boyutları (h x w x d): 2050 mm x 800 mm x 800 mm'e kadar
- İki Güç Kaybı: 1000W (2050mm x 800mm x 800mm için)
- Panonun Sac Kalınlığı (Metal) (mm): LULUSOYLAR / Karkas Sac 1,5 mm Galvanizli /ç Tavkiyeler 1,5 mm, Galvanizli On Kapak 1,5 mm, DKP Yan Arka Kapaklar 1 mm DKP/Perde Sacları 1 mm DKP/Çelik 1mm DKP
- Kilitlenme Sistemi Marka - Model: ATOS Adet Isıyapıcı Kilit (1 Adet)
- Boya Çözeltimi: AKZO NOBEL / Elektrostatik Polyester Toz Boya / RAL 7035 - 70x120 Miron (Çip Çaplı Polyester)
- Panonun Soğutma Tipi: Doğal
- Mahfazaya Montaj Şekli: Koyunak
- Çavata Çözeltimi: NORM / Galvanizli - Çelik
- MP10 Çavata B8
- MP15 Çavata B8
- MP12 Çavata B8
- Montaj: ATOS / Galvanizli Çelik (3 Adet)

HARİCİ DİKİLİ TİP SAYAÇ PANO

- Metal / Zeminle Sabitlenen / Bina Dış / IP54 / IK 10
- Numune Boyutları (h x w x d): 2050 mm x 800 mm x 800 mm'e kadar
- İki Güç Kaybı: 1000W (2050mm x 800mm x 800mm için)
- Panonun Sac Kalınlığı (Metal) (mm): LULUSOYLAR / Karkas Sac 1,5 mm Galvanizli /ç Tavkiyeler 1,5 mm, Galvanizli On Kapak 1,5 mm, DKP Yan Arka Kapaklar 1 mm DKP/Perde Sacları 1 mm DKP/Çelik 1mm DKP
- Kilitlenme Sistemi Marka - Model: ATOS Adet Isıyapıcı Kilit (1 Adet)
- Boya Çözeltimi: AKZO NOBEL / Elektrostatik Polyester Toz Boya / RAL 7035 - 70x120 Miron (Çip Çaplı Polyester)
- Panonun Soğutma Tipi: Doğal
- Mahfazaya Montaj Şekli: Koyunak
- Çavata Çözeltimi: NORM / Galvanizli - Çelik
- MP10 Çavata B8
- MP15 Çavata B8
- MP12 Çavata B8
- Montaj: ATOS / Galvanizli Çelik (3 Adet)

(Belge Kapsamının Dışında Sakımlı Sayılmadık)

14.10 / 2025
Ata GÜNGÖR, BAĞLI
Genel Müdür

UTTEST LABORATUVARLARI LTD. ŞTİ. - www.uttest.com.tr - info@uttest.com.tr

Belge geçerliliği periyodu 3 yıl olup belgenin geçerliliği firmamız UTTEST ailesi belgelendirme şartlarına uyumuna ve yabın en az bir kez yapılacak güncelleme devamlılığıyla belgenin geçerliliği devamlılığına bağlıdır. TÜRKAK (Ulusal Akademi Akademi) Forumu (IAF) Karşılıklı Tanınma Anlaşması (MLA) ile belgelendirilmiştir.

The validity period is 3 years and validity of the document depends on the success of surveillance audit to be held at least once a year and compliance of UT product certification provisions of the company. TÜRKAK has signed International Accreditation Forum (IAF) and Mutual Recognition Arrangement (MLA).

Lvt

ÜRÜN BELGESİ / PRODUCT CERTIFICATE

Belge Kapsamı NILPA PANO SANAYİ TİCARET A.Ş.
(261-1-62208/R2 numaralı belge devamı)

DAHİLİ DİKİLİ TİP ADP PANO

- Metal / Zeminle Sabitlenen / Bina İç / IP41 / IK 10
- Numune Boyutları (h x w x d): 2050 mm x 800 mm x 800 mm'e kadar
- İki Güç Kaybı: 1000W (2050mm x 800mm x 800mm için)
- Panonun Sac Kalınlığı (Metal) (mm): LULUSOYLAR / Karkas Sac 1,5 mm Galvanizli /ç Tavkiyeler 1,5 mm, Galvanizli On Kapak 1,5 mm, DKP Yan Arka Kapaklar 1 mm DKP/Perde Sacları 1 mm DKP/Çelik 1mm DKP
- Kilitlenme Sistemi Marka - Model: ATOS Adet Isıyapıcı Kilit (1 Adet)
- Boya Çözeltimi: AKZO NOBEL / Elektrostatik Polyester Toz Boya / RAL 7035 - 70x120 Miron (Çip Çaplı Polyester)
- Panonun Soğutma Tipi: Doğal
- Mahfazaya Montaj Şekli: Çavata
- Çavata Çözeltimi: NORM / Galvanizli - Çelik
- MP10 Çavata B8
- MP15 Çavata B8
- MP12 Çavata B8
- Montaj: ATOS / Galvanizli Çelik (3 Adet)

DAHİLİ DİKİLİ TİP TAVALI MCD PANO

- Metal / Zeminle Sabitlenen / Bina İç / IP41 / IK 10
- Numune Boyutları (h x w x d): 2050 mm x 800 mm x 800 mm'e kadar
- İki Güç Kaybı: 1000W (2050mm x 800mm x 800mm için)
- Panonun Sac Kalınlığı (Metal) (mm): LULUSOYLAR / Karkas Sac 1,5 mm Galvanizli /ç Tavkiyeler 1,5 mm, Galvanizli On Kapak 1,5 mm, DKP Yan Arka Kapaklar 1 mm DKP/Perde Sacları 1 mm DKP/Çelik 1mm DKP
- Kilitlenme Sistemi Marka - Model: ATOS Adet Isıyapıcı Kilit (1 Adet)
- Boya Çözeltimi: AKZO NOBEL / Elektrostatik Polyester Toz Boya / RAL 7035 - 70x120 Miron (Çip Çaplı Polyester)
- Panonun Soğutma Tipi: Doğal
- Mahfazaya Montaj Şekli: Çavata
- Çavata Çözeltimi: NORM / Galvanizli - Çelik
- MP10 Çavata B8
- MP15 Çavata B8
- MP12 Çavata B8
- Montaj: ATOS / Galvanizli Çelik (3 Adet)

(Belge Kapsamının Dışında Sakımlı Sayılmadık)

14.10 / 2025
Ata GÜNGÖR, BAĞLI
Genel Müdür

UTTEST LABORATUVARLARI LTD. ŞTİ. - www.uttest.com.tr - info@uttest.com.tr

Belge geçerliliği periyodu 3 yıl olup belgenin geçerliliği firmamız UTTEST ailesi belgelendirme şartlarına uyumuna ve yabın en az bir kez yapılacak güncelleme devamlılığıyla belgenin geçerliliği devamlılığına bağlıdır. TÜRKAK (Ulusal Akademi Akademi) Forumu (IAF) Karşılıklı Tanınma Anlaşması (MLA) ile belgelendirilmiştir.

The validity period is 3 years and validity of the document depends on the success of surveillance audit to be held at least once a year and compliance of UT product certification provisions of the company. TÜRKAK has signed International Accreditation Forum (IAF) and Mutual Recognition Arrangement (MLA).

Lvt

ÜRÜN BELGESİ / PRODUCT CERTIFICATE

Belge Kapsamı NILPA PANO SANAYİ TİCARET A.Ş.
(261-1-62208/R2 numaralı belge devamı)

DAHİLİ DİKİLİ TİP SAYAÇ PANO

- Metal / Zeminle Sabitlenen / Bina İç / IP41 / IK 10
- Numune Boyutları (h x w x d): 2050 mm x 800 mm x 800 mm'e kadar
- İki Güç Kaybı: 1000W (2050mm x 800mm x 800mm için)
- Panonun Sac Kalınlığı (Metal) (mm): LULUSOYLAR / Karkas Sac 1,5 mm Galvanizli /ç Tavkiyeler 1,5 mm, Galvanizli On Kapak 1,5 mm, DKP Yan Arka Kapaklar 1 mm DKP/Perde Sacları 1 mm DKP/Çelik 1mm DKP
- Kilitlenme Sistemi Marka - Model: ATOS Adet Isıyapıcı Kilit (1 Adet)
- Boya Çözeltimi: AKZO NOBEL / Elektrostatik Polyester Toz Boya / RAL 7035 - 70x120 Miron (Çip Çaplı Polyester)
- Panonun Soğutma Tipi: Doğal
- Mahfazaya Montaj Şekli: Çavata
- Çavata Çözeltimi: NORM / Galvanizli - Çelik
- MP10 Çavata B8
- MP15 Çavata B8
- MP12 Çavata B8
- Montaj: ATOS / Galvanizli Çelik (3 Adet)

PERDE SACLI TABLO BİNA ALTI

- Metal / Zeminle Sabitlenen / Bina İç / IP41 / IK 10
- Numune Boyutları (h x w x d): 1050 mm x 650 mm x 160 mm'e kadar
- İki Güç Kaybı: 100W (1050mm x 650mm x 160mm için)
- Panonun Sac Kalınlığı (Metal) (mm): LULUSOYLAR / Karkas Sac 1,5 mm Galvanizli /ç Tavkiyeler 1,5 mm Galvanizli On Kapak 1,5 mm, DKP Yan Arka Kapaklar 1 mm DKP/Perde Sacları 1 mm DKP/Çelik 1mm DKP
- Kilitlenme Sistemi Marka - Model: Çeyrek Doğru Kilit (1 Adet)
- Boya Çözeltimi: AKZO NOBEL / Elektrostatik Polyester Toz Boya / RAL 7035 - 70x120 Miron (Çip Çaplı Polyester)
- Panonun Soğutma Tipi: Doğal
- Mahfazaya Montaj Şekli: Koyunak
- Çavata Çözeltimi: NORM / Galvanizli - Çelik
- MP10 Çavata B8
- MP15 Çavata B8
- MP12 Çavata B8
- Montaj: ATOS / Galvanizli Çelik (2 Adet)

(Belge Kapsamının Dışında Sakımlı Sayılmadık)

14.10 / 2025
Ata GÜNGÖR, BAĞLI
Genel Müdür

UTTEST LABORATUVARLARI LTD. ŞTİ. - www.uttest.com.tr - info@uttest.com.tr

Belge geçerliliği periyodu 3 yıl olup belgenin geçerliliği firmamız UTTEST ailesi belgelendirme şartlarına uyumuna ve yabın en az bir kez yapılacak güncelleme devamlılığıyla belgenin geçerliliği devamlılığına bağlıdır. TÜRKAK (Ulusal Akademi Akademi) Forumu (IAF) Karşılıklı Tanınma Anlaşması (MLA) ile belgelendirilmiştir.

The validity period is 3 years and validity of the document depends on the success of surveillance audit to be held at least once a year and compliance of UT product certification provisions of the company. TÜRKAK has signed International Accreditation Forum (IAF) and Mutual Recognition Arrangement (MLA).

Lvt

OUR CERTIFICATIONS

ÜRÜN BELGESİ / PRODUCT CERTIFICATE

Belge Kapsamı (ILPA PANO SANAYİ TİCARET A.Ş. (201-1-62205/R2 numaralı belge devamı))

PERDE SACLI TABLO SIVA ÜSTÜ

- Metal / Duvara Sabitlenir / Brn Dış / IP5X / IK 10
- Numune Boyutları (h x w x d): 1050 mm x 650 mm x 150 mm'e kadar
- İki Güç Kaybı: 100W (1050mm x 650mm x 150mm içi)
- Panonun Sac Kalınlığı (Metal) (mm): ULUSOYLAR / KARKAS/Ön Kapak Perde Sacları: 1mm DKP/İç Takviyeler 1mm Galvaniz
- Kilitleme Sistemi Marka - Model: ATOS Çeyrek Dönüş Kilit (1 Adet)
- Sıya Çelikleri: AKZO NOBEL / Elektrostatik Polyester Toz Boya / RAL 7035 - 70x120 Mikron (Dış Çeyre Poyester)
- Panonun Sağlama Tipi: Doğal
- Manfaza Montaj Şekli: Kaynaklı
- Çavata Çelikleri: NORM / Galvanizli - Çelik
- MP10 Çavata B8
- MP15 Çavata B8
- MP12 Çavata B8
- Montaj: ATOS / Galvanizli Çelik (2 Adet)

TAVALI MCC TABLO SIVA ALTI

- Metal / Duvara Sabitlenir / Brn Dış / IP5X / IK 10
- Numune Boyutları (h x w x d): 1050 mm x 650 mm x 200 mm'e kadar
- İki Güç Kaybı: 100W (1050mm x 650mm x 150mm içi)
- Panonun Sac Kalınlığı (Metal) (mm): ULUSOYLAR / KARKAS/Ön Kapak Perde Sacları: 1mm DKP/İç Takviyeler 1mm Galvaniz
- Kilitleme Sistemi Marka - Model: ATOS Çeyrek Dönüş Kilit (1 Adet)
- Sıya Çelikleri: AKZO NOBEL / Elektrostatik Polyester Toz Boya / RAL 7035 - 70x120 Mikron (Dış Çeyre Poyester)
- Panonun Sağlama Tipi: Doğal
- Manfaza Montaj Şekli: Kaynaklı
- Çavata Çelikleri: NORM / Galvanizli - Çelik
- MP10 Çavata B8
- MP15 Çavata B8
- MP12 Çavata B8
- Montaj: ATOS / Galvanizli Çelik (2 Adet)

(Belge Kapsamının Devamı Sonraki Sayfada'dır)

14/10/2025
Ata Güllü ARSLANLI
Genel Müdür

LYTTESTLABORATUVARLARI LTD. ŞTİ. - www.lyttest.com.tr - lyttest.com.tr

Belge geçerlik periyodu 3 yıl olup belgenin geçerliliği Türkiye ÜT alan belgelendirme kuruluşuna ağıncasına ve yabık m ve b) her yıl yapılacak güncelleme denetimleri ile belgenin geçerliliğini sürdürmektedir. TÜRKAK (Ulusal Akademi Kurumu) (M) Karşılıklı Tanınma Anlaşması (M) ile belgenin geçerliliğini sürdürmektedir.

The validity period is 3 years and validity of the document depends on the actions of surveillance audit to be held at least once a year and compliance of ÜT product certification provisions of the company. TÜRKAK has signed International Accreditation Forum (IAF) and Multilateral Recognition Arrangement (MLA).

Lvt

ÜRÜN BELGESİ / PRODUCT CERTIFICATE

Belge Kapsamı (ILPA PANO SANAYİ TİCARET A.Ş. (201-1-62205/R2 numaralı belge devamı))

TAVALI MCC TABLO SIVA ÜSTÜ

- Metal / Duvara Sabitlenir / Brn Dış / IP5X / IK 10
- Numune Boyutları (h x w x d): 1050 mm x 650 mm x 200 mm
- İki Güç Kaybı: 100W (1050mm x 650mm x 150mm içi)
- Panonun Sac Kalınlığı (Metal) (mm): ULUSOYLAR / KARKAS/Ön Kapak Perde Sacları: 1mm DKP/İç Takviyeler 1mm Galvaniz
- Kilitleme Sistemi Marka - Model: ATOS Çeyrek Dönüş Kilit (2 Adet)
- Sıya Çelikleri: AKZO NOBEL / Elektrostatik Polyester Toz Boya / RAL 7035 - 70x120 Mikron (Dış Çeyre Poyester)
- Panonun Sağlama Tipi: Doğal
- Manfaza Montaj Şekli: Kaynaklı
- Çavata Çelikleri: NORM / Galvanizli - Çelik
- MP10 Çavata B8
- MP15 Çavata B8
- MP12 Çavata B8
- Montaj: ATOS / Galvanizli Çelik (2 Adet)

PİYANO PANO

- Metal / Duvara Sabitlenir / Brn Dış / IP5X / IK 10
- Numune Boyutları (h x w x d): 1050 mm x 650 mm x 300 mm'e kadar
- İki Güç Kaybı: 250W (1050mm x 650mm x 150mm içi)
- Panonun Sac Kalınlığı (Metal) (mm): ULUSOYLAR / KARKAS/Ön Kapak Perde Sacları: 1mm DKP/İç Takviyeler 1mm Galvaniz
- Kilitleme Sistemi Marka - Model: ATOS Kilit 35 0 81 0 (3 Adet)
- Sıya Çelikleri: AKZO NOBEL / Elektrostatik Polyester Toz Boya / RAL 7035 - 70x120 Mikron (Dış Çeyre Poyester)
- Panonun Sağlama Tipi: Doğal
- Manfaza Montaj Şekli: Kaynaklı
- Çavata Çelikleri: NORM / Galvanizli - Çelik
- MP10 Çavata B8
- MP15 Çavata B8
- MP12 Çavata B8
- Montaj: ATOS / Galvanizli Çelik (2 Adet)

(Belge Kapsamının Devamı Sonraki Sayfada'dır)

14/10/2025
Ata Güllü ARSLANLI
Genel Müdür

LYTTESTLABORATUVARLARI LTD. ŞTİ. - www.lyttest.com.tr - lyttest.com.tr

Belge geçerlik periyodu 3 yıl olup belgenin geçerliliği Türkiye ÜT alan belgelendirme kuruluşuna ağıncasına ve yabık m ve b) her yıl yapılacak güncelleme denetimleri ile belgenin geçerliliğini sürdürmektedir. TÜRKAK (Ulusal Akademi Kurumu) (M) Karşılıklı Tanınma Anlaşması (M) ile belgenin geçerliliğini sürdürmektedir.

The validity period is 3 years and validity of the document depends on the actions of surveillance audit to be held at least once a year and compliance of ÜT product certification provisions of the company. TÜRKAK has signed International Accreditation Forum (IAF) and Multilateral Recognition Arrangement (MLA).

Lvt

ÜRÜN BELGESİ / PRODUCT CERTIFICATE

Belge Kapsamı (ILPA PANO SANAYİ TİCARET A.Ş. (201-1-62205/R2 numaralı belge devamı))

HARICI PERDE SACLI TABLO

- Metal / Duvara Sabitlenir / Brn Dış / IP5X / IK 10
- Numune Boyutları (h x w x d): 650 mm x 500 mm x 200 mm'e kadar
- İki Güç Kaybı: 100W (650mm x 500mm x 200mm içi)
- Panonun Sac Kalınlığı (Metal) (mm): ULUSOYLAR / KARKAS/Ön Kapak Perde Sacları: 1mm DKP/İç Takviyeler 1mm Galvaniz
- Kilitleme Sistemi Marka - Model: ATOS Çeyrek Dönüş Kilit (2 Adet)
- Sıya Çelikleri: AKZO NOBEL / Elektrostatik Polyester Toz Boya / RAL 7035 - 70x120 Mikron (Dış Çeyre Poyester)
- Panonun Sağlama Tipi: Doğal
- Manfaza Montaj Şekli: Kaynaklı
- Çavata Çelikleri: NORM / Galvanizli - Çelik
- MP10 Çavata B8
- MP15 Çavata B8
- MP12 Çavata B8
- Montaj: ATOS / Galvanizli Çelik (2 Adet)

HARICI TABLO TAVALI MCC TABLO

- Metal / Duvara Sabitlenir / Brn Dış / IP5X / IK 10
- Numune Boyutları (h x w x d): 650 mm x 500 mm x 200 mm'e kadar
- İki Güç Kaybı: 100W (650mm x 500mm x 200mm içi)
- Panonun Sac Kalınlığı (Metal) (mm): ULUSOYLAR / KARKAS/Ön Kapak Perde Sacları: 1mm DKP/İç Takviyeler 1mm Galvaniz
- Kilitleme Sistemi Marka - Model: ATOS Çeyrek Dönüş Kilit (2 Adet)
- Sıya Çelikleri: AKZO NOBEL / Elektrostatik Polyester Toz Boya / RAL 7035 - 70x120 Mikron (Dış Çeyre Poyester)
- Panonun Sağlama Tipi: Doğal
- Manfaza Montaj Şekli: Kaynaklı
- Çavata Çelikleri: NORM / Galvanizli - Çelik
- MP10 Çavata B8
- MP15 Çavata B8
- MP12 Çavata B8
- Montaj: ATOS / Galvanizli Çelik (2 Adet)

(Belge Kapsamının Devamı Sonraki Sayfada'dır)

14/10/2025
Ata Güllü ARSLANLI
Genel Müdür

LYTTESTLABORATUVARLARI LTD. ŞTİ. - www.lyttest.com.tr - lyttest.com.tr

Belge geçerlik periyodu 3 yıl olup belgenin geçerliliği Türkiye ÜT alan belgelendirme kuruluşuna ağıncasına ve yabık m ve b) her yıl yapılacak güncelleme denetimleri ile belgenin geçerliliğini sürdürmektedir. TÜRKAK (Ulusal Akademi Kurumu) (M) Karşılıklı Tanınma Anlaşması (M) ile belgenin geçerliliğini sürdürmektedir.

The validity period is 3 years and validity of the document depends on the actions of surveillance audit to be held at least once a year and compliance of ÜT product certification provisions of the company. TÜRKAK has signed International Accreditation Forum (IAF) and Multilateral Recognition Arrangement (MLA).

Lvt

TEST SERTİFİKASI / TEST CERTIFICATE

TEST LABORATUVARLARI LTD. ŞTİ.

No : C-23-2611-R0

Müşteri : NILAS ÇELİK SANAYİ TİCARET ANONİM ŞİRKETİ

İmalatçı : NILAS ÇELİK SANAYİ TİCARET ANONİM ŞİRKETİ

Ürün Tanımı : 4000 A ACB ÇİREİLİ ALÇAK GERİLİM ANAHAIRLAMA ve KONTROL ÜZÜENİ

Marka : NILPA ELEKTRİK PANO SİSTEMLERİ

Teknik Veri : I_n: 4000 A, U_n: 1000 V, U_{imp}: 12.0 kV, I_{sc}: 65 kA (Ana Bar), I_{sc}: 40 kA (Tograk Bar), I_{sc}: 65 kA (ABB 4000 A ACB), I_{sc}: 36 kA (ABB 4000 A ACB), Form 4b

Test Standardı : TS EN IEC 61439-1:2021 + AC:2022, TS EN IEC 61439-2:2021

Konu : TEST SONUCU (DULUMLU)

Uygulanan Test(ler) : Sıcaklık Artışın Doğrulanması, Dielektrik Özellikler, Yalıtım Aralıkları & Yüzeyel Kaçak Yolu Uzunlukları, Mekanik Çalışma, Elektrik Çalışmasına Karşı Koruma ve Koruma Özelliklerinin Rütünlüğü, Kına Devre Dayanımı, Dayanıklılık, Anormal Isıya ve Dahili Elektrik Etkilerinden Kaynaklanan Yangına Dayanıklılığın Doğrulanması, Dahili Elektriksel Devreler ve Bağlantılar, Harici Etkilerden İçin Bağlantı Uçları, Anahtarlar Çıkarılma ve Bileşenlerinin Birleştirilmesi

Test Rapor Numarası : 23-2611-R0-N1-1

Sertifika Tarihi : 09.01.2024

Deney Sorumlusu : Bölüm Müdürü

Yeni ARSOĞAN : Ata Güllü ARSLANLI

QR Kodu :

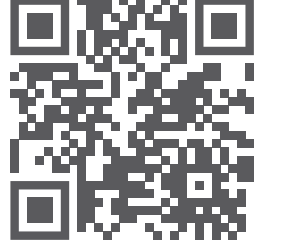
www.lyttest.com.tr

FRT.88 / Rev01 / 1019

3eray Modern Kuvvetlendirici San. Tic. A.Ş. Cad. No: 8 K. Kat: Ankara - TÜRKİYE
Tel: +90 312 815 13 38 - 24 - Fax: +90 312 815 13 27 - e-mail: lyttest@lyttest.com.tr



Enclosure, Panel and Cabinet Systems



Sağlık District Soğuksu Street
No 1 / Al Ergene / Tekirdağ



+90 282 686 77 33
+90 532 305 37 59



info@nilpapano.com



www.nilpapano.com